

Technical Information

Reveal® - Refrigerated Self-Service Case

Structural Concepts®

DELIVERING FRESH. ALWAYS.™

DIMENSIONS / SHIPPING

Model	L"	L1"	L2"	Est Wt (lbs)
NR3647RSSV	N/A	35.750	7.500	N/A
NR4847RSSV	N/A	47.750	7.500	N/A
NR6047RSSV	N/A	59.750	7.500	N/A
NR7247RSSV	N/A	71.750	7.500	N/A

ELECTRICAL

Model	System Circuit Volts			Ph	Frq	Rated Load Amps	Min Cir Amps	Max OCP Amps	Watts	Wires	NEMA Plug	Amps Lights	Amps Fans	Amps Anti-Sweats	Amps Misc/Refrig/Heat
NR3647RSSV	Remote (DX)	Circuit #1	110-120	1	60	1.05	15	15	36	2+G	Leads Single	0.70	0.15	0.12	0.08
	Remote (DX)	Circuit #1	110-120	1	60	1.05	15	15	36	2+G	Leads Single	0.70	0.15	0.12	0.08
	Self-Contained (R513A)	Circuit #1	110-120	1	60	16.00	20	20	1,183	2+G	5-20P or L5-20P	0.70	0.90	4.08	11.00
	Self-Contained (R290)	Circuit #1	110-120	1	60	15.15	20	20	1,508	2+G	5-20P or L5-20P	N/A	0.45	4.08	10.62
NR4847RSSV	Remote (DX)	Circuit #1	110-120	1	60	1.56	15	15	76	2+G	Leads Single	0.70	0.60	0.18	0.08
	Remote (DX)	Circuit #1	110-120	1	60	1.56	15	15	76	2+G	Leads Single	0.70	0.60	0.18	0.08
	Self-Contained (R513A)	Circuit #1	110-120	1	60	16.00	20	20	1,209	2+G	5-20P or L5-20P	0.70	1.20	4.14	11.00
	Self-Contained (R290)	Circuit #1	110-120	1	60	15.65	20	20	1,544	2+G	5-20P or L5-20P	N/A	0.90	4.13	10.62
NR6047RSSV	Remote (DX)	Circuit #1	110-120	1	60	1.60	15	15	85	2+G	Leads Single	0.70	0.60	0.22	0.08
	Remote (DX)	Circuit #1	110-120	1	60	1.60	15	15	85	2+G	Leads Single	0.70	0.60	0.22	0.08
	Self-Contained (R513A)	Circuit #1	110-120	1	60	16.00	20	20	1,218	2+G	5-20P or L5-20P	0.70	1.20	4.18	10.00
	Self-Contained (R290)	Circuit #1	208-240	1	60	16.00	20	20	2,806	2+G	6-20P or L6-20P	N/A	0.44	3.52	13.61
NR7247RSSV	Remote (DX)	Circuit #1	110-120	1	60	1.64	15	15	96	2+G	Leads Single	0.70	0.60	0.26	0.08
	Remote (DX)	Circuit #1	110-120	1	60	1.64	15	15	96	2+G	Leads Single	0.70	0.60	0.26	0.08
	Self-Contained (R513A)	Circuit #1	208-240	1	60	9.91	15	15	1,374	2+G	6-15P or L6-15P	0.36	0.75	2.30	6.50
	Self-Contained (R290)	Circuit #1	208-240	1	60	16.00	20	20	2,821	2+G	6-20P or L6-20P	N/A	0.44	3.54	13.61

REFRIGERATION

Model	Zone	Section	System	Envt	REMOTE REFRIGERATION					GLYCOL / R744 REFRIGERATION			
					SST (°F)	Conv. Rack BTUH	Para. Rack BTUH	Defrost Interval (Hrs)	Defrost Duration	Total GPM	Pressure Drop (psi)	Concent (%)	Liquid Temp (°F)
NR3647RSSV	All	Refrigerator	Remote-DX	Type II	20	2,635	2,440	4.00	30.00	N/A	N/A	N/A	N/A
	All	Main	Self-Contained-R513A	Type II	N/A	N/A	N/A	N/A	N/A	N/A	N/A	N/A	N/A
	All	Refrigerator	Remote-DX	Type I	20	2,138	1,980	4.00	30.00	N/A	N/A	N/A	N/A
NR4847RSSV	All	Refrigerator	Remote-DX	Type II	20	3,478	3,220	4.00	30.00	N/A	N/A	N/A	N/A
	All	Main	Self-Contained-R513A	Type II	N/A	N/A	N/A	N/A	N/A	N/A	N/A	N/A	N/A
	All	Refrigerator	Remote-DX	Type I	20	2,830	2,620	4.00	30.00	N/A	N/A	N/A	N/A
NR6047RSSV	All	Refrigerator	Remote-DX	Type II	20	4,342	4,020	4.00	25.00	N/A	N/A	N/A	N/A
	All	Main	Self-Contained-R513A	Type II	N/A	N/A	N/A	N/A	N/A	N/A	N/A	N/A	N/A
	All	Refrigerator	Remote-DX	Type I	20	3,542	3,280	4.00	25.00	N/A	N/A	N/A	N/A
NR7247RSSV	All	Refrigerator	Remote-DX	Type II	20	5,184	4,800	4.00	25.00	N/A	N/A	N/A	N/A
	All	Main	Self-Contained-R513A	Type II	N/A	N/A	N/A	N/A	N/A	N/A	N/A	N/A	N/A
	All	Refrigerator	Remote-DX	Type I	20	4,212	3,900	4.00	25.00	N/A	N/A	N/A	N/A

INTENDED ENVIRONMENT

Type II - Designed to operate in ambient conditions of 80°F and 55% relative humidity unless noted otherwise under Envt above.

WARMEST AVERAGE PRODUCT TEMP & INTENDED USE OF ZONES

Zone	Temp (°F)	Intended Use
1	40	Packaged refrigerated products

REGULATORY

All Models	Accordance with AHRI Std 1200 ETL Listed to UL 471 ETL Listed to CAN/CSA 22.2 No. 120 ETL Sanitation to NSF/ANSI 7
------------	---

IMPORTANT NOTES

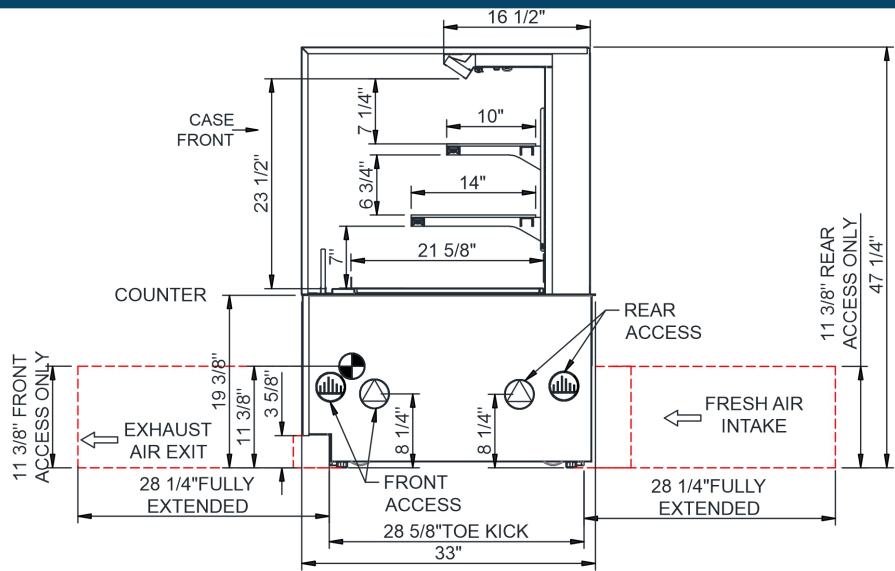
- 1) ELECTRICAL NOTE: If GFCI is required, a GFCI breaker MUST be used in lieu of a GFCI receptacle
- 2) Back side of counter must be open or vented the full length of the unit to allow proper ventilation for the refrigeration system.
- 3) Glass warranty only applicable to first point of delivery.



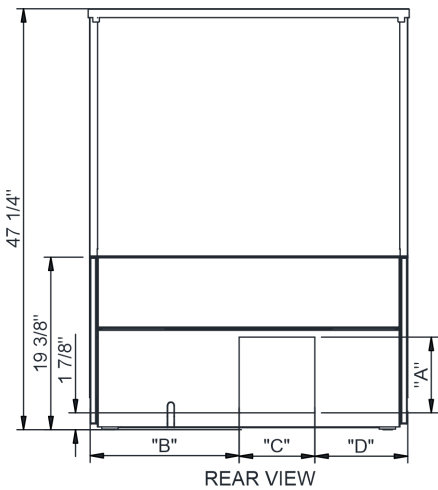
In Accordance with
AHRI Std 1200

Technical Information

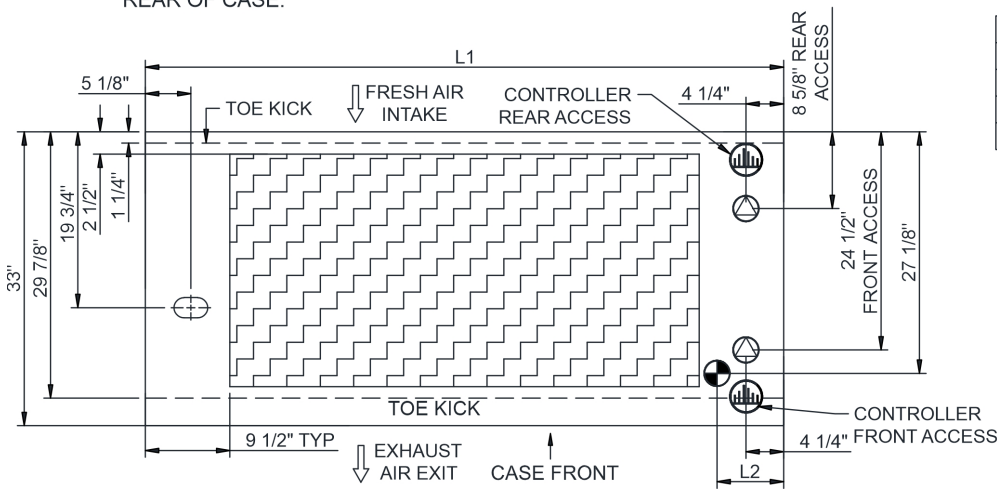
Reveal® - Refrigerated Self-Service Case



- NOTES:
- 1. 11 3/8" TALL, FULL WIDTH OF CASE OPENING IN CABINET OR COUNTER IS REQUIRED TO PULL OUT REFRIGERATION SYSTEM.
 - 2. BACK OF COUNTER / CABINET MUST BE VENTED PROPERLY FOR ADEQUATE AIRFLOW TO CONDENSER.
 - 3. **REPRESENTS REAR PULLOUT REFRIGERATION. AIR FLOW INTAKE AND EXIT DETAILS ARE REVERSED WITH FRONT PULLOUT REFRIGERATION OPTION.
 - 4. SELF-CONTAINED ACCESS ONLY BY PULLING OUT CONDENSER UNIT.
 - 5. 4" OPEN AREA CLEARANCE REQUIRED FOR AIR FLOW FRONT AND REAR OF CASE.



	"A"	"B"	"C"	"D"
NR3647RSSV	8 1/2"	16 3/4"	8 1/2"	10 3/8"
NR4847RSSV	8 1/2"	28 3/4"	8 1/2"	10 3/8"
NR6047RSSV	8 1/2"	19 1/2"	8 1/2" x2	10 3/8"
NR7247RSSV	8 1/2"	22 3/4"	8 1/2" x2	10 3/8"



R290 SELF-CONTAINED ACCESS DIMENSIONS PROVIDED.
CONTACT FACTORY FOR ALL OTHER SELF-CONTAINED ACCESS DIMENSIONS

NOTE: ALL DIMENSIONS APPROXIMATE

- ELECTRICAL JUNCTION BOX (SUPPLIED WITH 6" LEADS OR POWER CORD).
- REFRIGERATION LINE CONNECTION.
- SELF-CONTAINED CASE SERVICE ACCESS AREA.
- LOCATION OF DRAIN TUBE FOR REMOTE REF. ONLY (SUPPLIED WITH 3/4" OR 1 1/2" PVC TUBE).
- REMOTE FLOOR SINK & UTILITIES ACCESS AREA.
- DRY CASE SERVICE ACCESS AREA.