

Addenda

Non-Refrigerated Self-Service Case w/ Bag Area

• CDS4565

44-3/4"L x 32-5/8"D x 66-1/4"H

Included

- 1" Price tag molding (black)
- Black interior & exterior
- Holds (12) 13" x 18" trays
- LED 3500K top light
- Tissue box holder
- Upper and lower storage areas



CDS4565

Specify	Standard Features	Additional Options
EXTERIOR COLOR	• Powder coated Silversan Black	
INTERIOR COLOR	• Powder coated Silversan Black	
BASE SUPPORT	• Levelers	
FRONT DOORS	• Clear glass swinging doors w/o lock	
PACKAGE LEDGE	• 10" package ledge with bag storage & tissue box holder	
LOWER STORAGE	• Lower front storage with swing doors	
PRICE TAG MOLDING	• 1" Price tag molding (black)	
REAR DOORS	• None (solid back panel)	• Clear glass swinging doors w/o lock
SHELVING	• (4) levels tray support, non-lighted shelves	
LIGHTS	• LED 3500K top light	
ELECTRICAL CONNECTION	• 6' 90° Straight blade power cord	

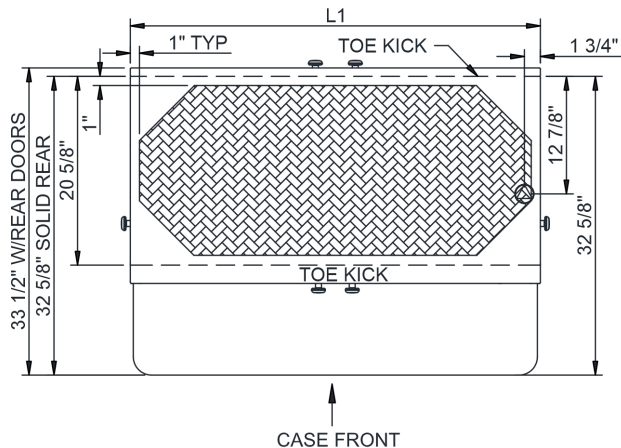
Addenda

Non-Refrigerated Self-Service Case w/ Bag Area

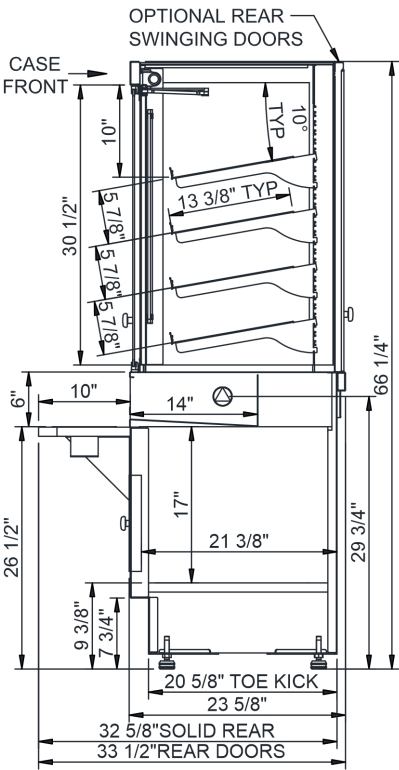
Structural Concepts®
DELIVERING FRESH. ALWAYS.™

Intended Environment: Type I - Designed to operate in ambient conditions of 75°F with 55% relative humidity unless noted otherwise in system information below.		
Zone	Intended Product To Be Displayed	Warmest Avg Prod Temp ° F
1	Unpackaged non-refrigerated products	Ambient

PLAN VIEW



SIDE VIEW



NOTE: ALL DIMENSIONS APPROXIMATE

- ELECTRICAL JUNCTION BOX (SUPPLIED WITH 6" LEADS OR POWER CORD).
- LOCATION OF DRAIN TUBE FOR REMOTE REF. ONLY (SUPPLIED WITH 3/4" OR 1 1/2" PVC TUBE).

- REFRIGERATION LINE CONNECTION.
- REMOTE FLOOR SINK & UTILITIES ACCESS AREA.

- SELF-CONTAINED CASE SERVICE ACCESS AREA.
- DRY CASE SERVICE ACCESS AREA.

Model Technical Specifications																
Model	L"	L1"	L2"	System Circuit Volts			Phs	Freq	Amps ***	Watts	Wires	NEMA Plug	SST	Conv. Rack BTUH	Para. Rack BTUH	Est Wt
CDS4565	N/A	44.75	.00	Ambient/Lights (N/A)		Circuit #1	110-120	1	60	0.70	6	2+G	5-15P	N/A	N/A	N/A

*** Does not include electric defrost on freezer models.

Regulatory Approvals:	
All Models	ETL Listed to UL 65 ETL Sanitation to NSF/ANSI 2



DOE 2017
Energy Efficiency
Compliant

Important Notes:

1) 24" Minimum door entry clearance required (Without shipping skid)

⚠ WARNING: This product can expose you to chemicals, including Urethane (Ethyl Carbamate), which are known to the State of California to cause cancer and birth defects or other reproductive harm. For more information go to www.P65Warnings.ca.gov.