

Technical Information

Allure - FC2DR Combination Case

Structural Concepts®

DELIVERING FRESH. ALWAYS.™

DIMENSIONS / SHIPPING

Model	L"	L1"	L2"	Est Wt (lbs)
FC2DR	48.500	50.750	24.250	N/A
FC3DR	72.000	74.250	36.000	N/A

ELECTRICAL

Model	System Circuit Volts			Ph	Frq	Rated Load Amps	Min Cir Amps	Max OCP Amps	Watts	Wires	NEMA Plug	Amps Lights	Amps Fans	Amps Anti-Sweats	Amps Misc/Refrig/Heat
FC2DR	Remote (DX)	Circuit #1	110-120	1	60	1.30	15	15	47	2+G	Leads Single	0.70	0.60		N/A
	Remote (GLYCOL)	Circuit #1	110-120	1	60	1.30	15	15	47	2+G	Leads Single	0.70	0.60		N/A
	Remote (R744 L)	Circuit #1	110-120	1	60	1.38	15	15	76	2+G	Leads Single	0.70	0.60		0.08
	Remote (R744 T)	Circuit #1	110-120	1	60	1.30	15	15	47	2+G	Leads Single	0.70	0.60		N/A
FC3DR	Remote (GLYCOL)	Circuit #1	110-120	1	60	1.60	15	15	71	2+G	Leads Single	0.70	0.90		N/A
	Remote (DX)	Circuit #1	110-120	1	60	1.60	15	15	71	2+G	Leads Multiple	0.70	0.90		N/A
	Remote (R744 L)	Circuit #1	110-120	1	60	1.68	15	15	81	2+G	Leads Single	0.70	0.90		0.08
	Remote (R744 T)	Circuit #1	110-120	1	60	1.63	15	15	92	2+G	Leads Multiple	0.70	0.93		N/A

REFRIGERATION

Model	Zone	Section	System	Envr	REMOTE REFRIGERATION					GLYCOL / R744 REFRIGERATION			
					SST (°F)	Conv. Rack BTUH	Para. Rack BTUH	Defrost Interval (Hrs)	Defrost Duration	Total GPM	Pressure Drop (psi)	Concent (%)	Liquid Temp (°F)
FC2DR	All	Main	Remote-DX	Type I	26	4,772	4,418	4.00	30.00	N/A	N/A	N/A	N/A
	All	Main	Remote-Glycol	Type I	N/A	3,974	3,680	4.00	45.00	2.00	6.18	35%	26.00
	All	Main	Remote-R744 LIQ OVERFEED	Type I		3,974	3,680	4.00	30.00	0.38	0.82	N/A	26.00
	All	Refrigerator	Remote-R744 TRANSCRITICAL	Type I	26	3,974	3,680	4.00	30.00	N/A	N/A	N/A	N/A
FC3DR	All	Main	Remote-Glycol	Type I	N/A	5,664	5,245	4.00	45.00	1.50	2.40	35%	26.00
	All	Main	Remote-DX	Type I	26	5,664	5,245	4.00	30.00	N/A	N/A	N/A	N/A
	All	Main	Remote-R744 LIQ OVERFEED	Type I		5,664	5,245	4.00	30.00	0.61	0.42	N/A	26.00
	All	Main	Remote-R744 TRANSCRITICAL	Type I	26	5,664	5,245	4.00	30.00	N/A	N/A	N/A	N/A

INTENDED ENVIRONMENT

Type I - Designed to operate in ambient conditions of 75°F with 55% relative humidity unless noted otherwise under Envr above.

WARMEST AVERAGE PRODUCT TEMP & INTENDED USE OF ZONES

Zone	Temp (°F)	Intended Use
1	40	Floral products

IMPORTANT NOTES

- 1) ELECTRICAL NOTE: If GFCI is required, a GFCI breaker MUST be used in lieu of a GFCI receptacle.
- 2) Top electrical access.
- 3) Keep unit at least 15' from exterior doors, 10' from overhead HVAC vents, 5' from exterior windows.
- 4) Units are supplied with levelers which must be adjusted during installation to ensure the unit is level and plumb.
- 5) Performance issues (product temperatures, water on floor, etc) caused by adverse conditions are not covered by warranty.

REGULATORY

All Models	Accordance with AHRI Std 1200 ETL Listed to UL 471 ETL Listed to CAN/CSA 22.2 No. 120
------------	---



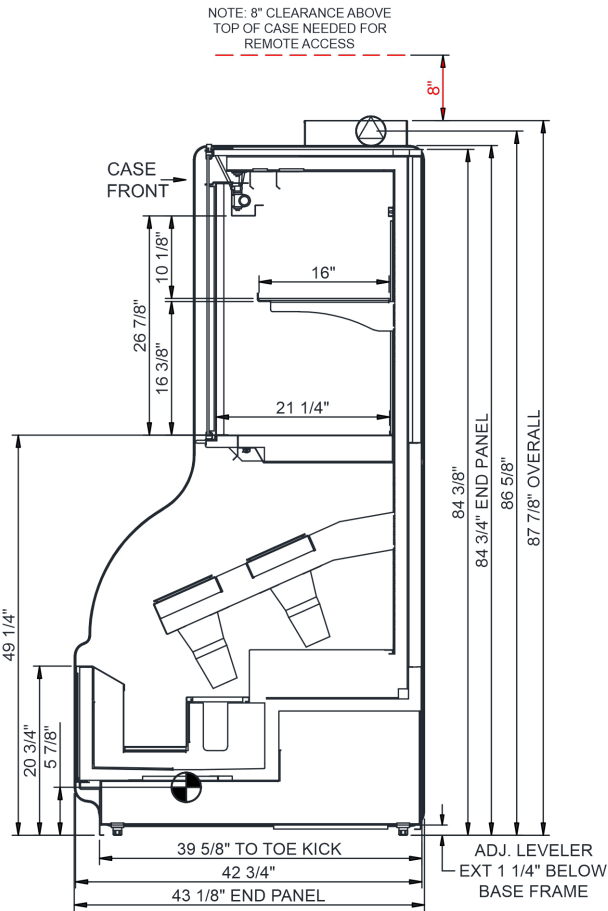
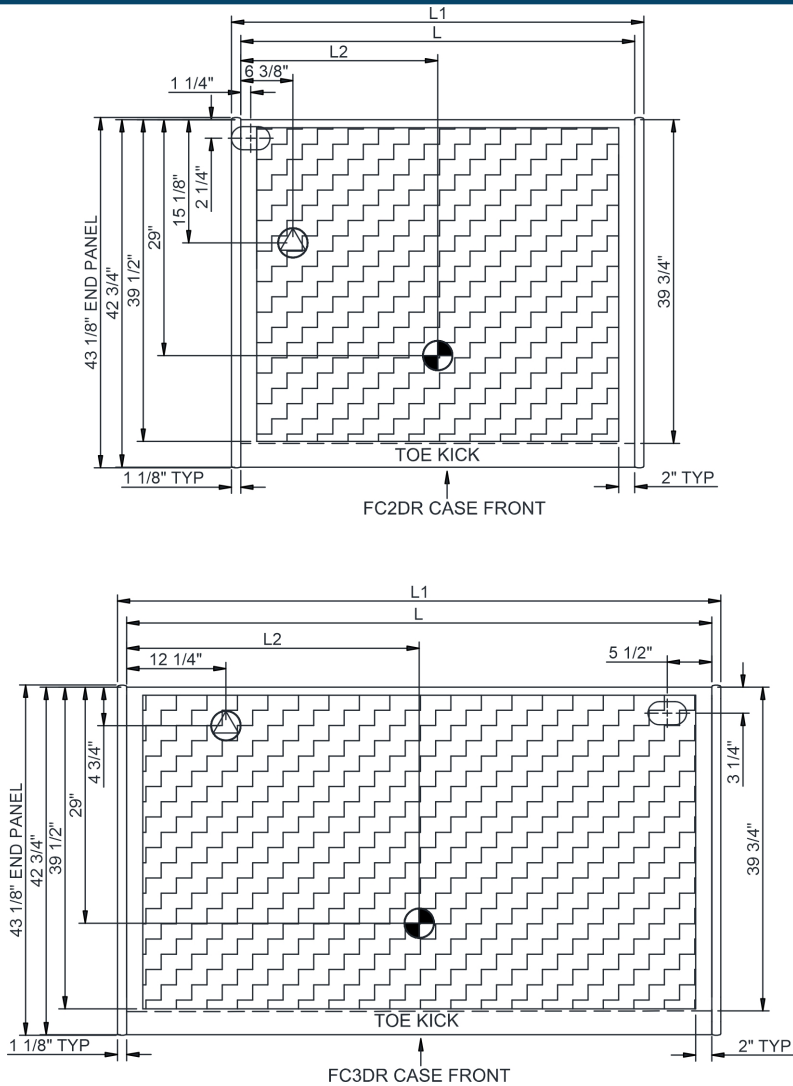
In Accordance with
AHRI Std 1200

Technical Information

Allure - FC2DR Combination Case

Structural Concepts®

DELIVERING FRESH. ALWAYS.™



NOTE: ALL DIMENSIONS APPROXIMATE

- | | | |
|--|--|---|
|  ELECTRICAL JUNCTION BOX (SUPPLIED WITH 6" LEADS OR POWER CORD). |  REFRIGERATION LINE CONNECTION. |  SELF-CONTAINED CASE SERVICE ACCESS AREA. |
|  LOCATION OF DRAIN TUBE FOR REMOTE REF. ONLY (SUPPLIED WITH 3/4" OR 1 1/2" PVC TUBE). |  REMOTE FLOOR SINK & UTILITIES ACCESS AREA. |  DRY CASE SERVICE ACCESS AREA. |