

• FSE460R

50-3/4"L x 36-1/8"D x 60-5/8"H

Included

- Breeze self-contained refrigeration
- 1" bumper, double strip (specify color)
- Full end panel w/mirror interior
- LED 4000K top light(s)
- One year parts & labor; 5 year compressor warranty
- Price tag molding (matches interior color)
- Removable deck pans provide complete access to evaporator coil & refrigeration connections
- Shelving removable and adjustable on 1" centers
- Warmest average product temperature of 40°F or less

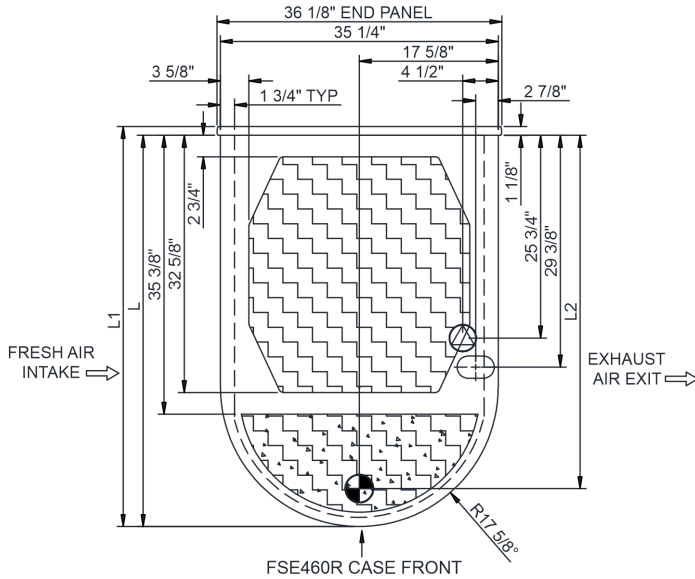


Specify	Standard Features	Additional Options
EXTERIOR COLOR	• Powder coated Black Texture	• Laminate (stock/non-stock colors) • Stainless steel
INTERIOR COLOR	• Powder coated Silversan Black	• Stainless steel
LOWER FRONT PANEL COLOR	• Powder coated Black Texture	• Stainless steel (must choose stainless exterior)
BASE SUPPORT	• Casters w/ levelers (self-cont.)	• Levelers (remote)
VINYL GRAPHICS	• None	• Full wrap graphic set
SHELVING	• Metal shelves (3), non-lighted	• Metal shelves (2), lighted (LED 4000K) • Metal shelves (2), non-lighted • Metal shelves (3), lighted (LED 4000K)
ELECTRICAL CONNECTION	• 6' Straight blade power cord (self-cont.)	• 6' Locking power cord (self-cont.) • Electrical leads (remote)
REFRIGERATION	• Breeze self-contained refrigeration	¹ • Remote w/thermostat, solenoid & TXV
MISCELLANEOUS		• Second year parts & labor warranty (excludes compressor)

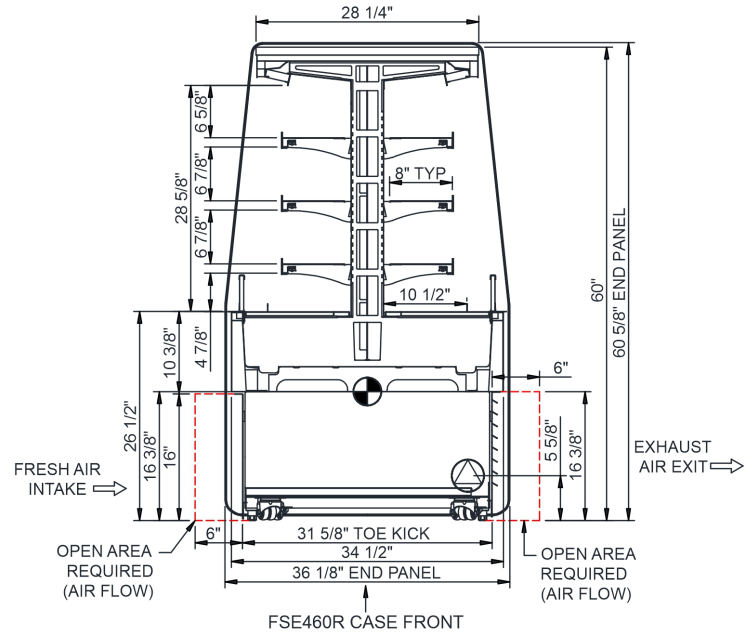
Option Notes: ¹ - Read important notes for remote options

Intended Environment: Type I - Designed to operate in ambient conditions of 75°F with 55% relative humidity unless noted otherwise in system information below.		
Zone	Intended Product To Be Displayed	Warmest Avg Prod Temp ° F
1	Packaged refrigerated products-Prechilled to Warmest Avg Prod Temp.	40

PLAN VIEW



SIDE VIEW



NOTE: ALL DIMENSIONS APPROXIMATE

- ELECTRICAL JUNCTION BOX (SUPPLIED WITH 6" LEADS OR POWER CORD).
- LOCATION OF DRAIN TUBE FOR REMOTE REF. ONLY (SUPPLIED WITH 3/4" OR 1 1/2" PVC TUBE).

- REFRIGERATION LINE CONNECTION.
- REMOTE FLOOR SINK & UTILITIES ACCESS AREA.

- SELF-CONTAINED CASE SERVICE ACCESS AREA.
- DRY CASE SERVICE ACCESS AREA.

Model Technical Specifications																
Model	L"	L1"	L2"	System Circuit Volts		Phs	Freq	Amps ***	Watts	Wires	NEMA Plug	SST	Conv. Rack BTUH	Para. Rack BTUH	Est Wt	
FSE460R	N/A	50.75	0	Remote (N/A)	Circuit #1	110-120	1	50-60	2.20	67	2+G	Leads Single	20.00	6631	6140	950
				Self-Contained (R290)	Circuit #1	208-240	1	50-60	14.32	2,788	2+G	6-20P or L6-20P	N/A	N/A	N/A	

*** Does not include electric defrost on freezer models.

Regulatory Approvals:	
All Models	Accordance with AHRI Std 1200 ETL Listed to UL 60335-2-89 ETL Sanitation to NSF/ANSI 7



In Accordance with
AHRI Std 1200

DOE 2017
Energy Efficiency
Compliant

Important Notes:

- 1) REMOTE REFRIGERATION NOTE: Condensing unit not included, floor drain required.
- 2) ELECTRICAL NOTE: If GFCI is required, a GFCI breaker MUST be used in lieu of a GFCI receptacle
- 3) 37" minimum door entry clearance required (without shipping skid).
- 5) Units are supplied with levelers. They must be adjusted during installation to ensure the unit is level and plumb. Dimensions reflect levelers extended 1 1/4".
- 6) Performance issues (product temperatures, water on floor, etc.) caused by adverse conditions are not covered by warranty.
- 7) Keep unit at least 15' from exterior doors, overhead HVAC vents, or any air curtain disruption.
- 8) End panels must be tightly joined or kept at least 6" away from any structure to prevent condensation.
- 9) Do not expose unit to direct sunlight or any heat source (ovens, fryers, etc.).

⚠ WARNING: This product can expose you to chemicals, including Urethane (Ethyl Carbamate), which are known to the State of California to cause cancer and birth defects or other reproductive harm. For more information go to www.P65Warnings.ca.gov.