

# Technical Information

Fusion - GLDS 52"H Refrigerated Service Case

Structural Concepts®

DELIVERING FRESH. ALWAYS.™

## DIMENSIONS / SHIPPING

| Model  | L"     | L1"    | L2"   | Est Wt (lbs) |
|--------|--------|--------|-------|--------------|
| GLDS4R | 48.750 | 51.000 | 3.500 | 1,050        |
| GLDS5R | 60.625 | 62.875 | 3.500 | 1,150        |
| GLDS6R | 73.125 | 75.375 | 3.500 | 1,250        |

## ELECTRICAL

| Model  | System Circuit Volts |            |         |  | Ph | Frq | Rated Load Amps | Min Cir Amps | Max OCP Amps | Watts | Wires | NEMA Plug      | Amps Lights | Amps Fans | Amps Anti-Sweats | Amps Misc/Refrig/Heat |
|--------|----------------------|------------|---------|--|----|-----|-----------------|--------------|--------------|-------|-------|----------------|-------------|-----------|------------------|-----------------------|
| GLDS4R | Remote (DX)          | Circuit #1 | 110-120 |  | 1  | 60  | 1.53            | 15           | 15           | 106   | 2+G   | Leads Multiple | 0.53        | 0.30      | 0.70             | N/A                   |
| GLDS5R | Remote (GLYCOL)      | Circuit #1 | 110-120 |  | 1  | 60  | 1.99            | 15           | 15           | 168   | 2+G   | Leads Multiple | 0.69        | 0.60      | 0.70             | N/A                   |
|        | Remote (DX)          | Circuit #1 | 110-120 |  | 1  | 60  | 2.02            | 15           | 15           | 84    | 2+G   | Leads Multiple | 0.70        | 0.62      | 0.70             | N/A                   |
| GLDS6R | Remote (DX)          | Circuit #1 | 110-120 |  | 1  | 60  | 2.29            | 15           | 15           | 82    | 2+G   | Leads Multiple | 0.70        | 0.60      | 0.99             | N/A                   |
|        | Remote (GLYCOL)      | Circuit #1 | 110-120 |  | 1  | 60  | 2.29            | 15           | 15           | 82    | 2+G   | Leads Multiple | 0.70        | 0.60      | 0.99             | N/A                   |

## REFRIGERATION

| Model  | Zone | Section | System        | Envt   | REMOTE REFRIGERATION |                 |                 |                        |                  | GLYCOL / R744 REFRIGERATION |                     |             |                  |
|--------|------|---------|---------------|--------|----------------------|-----------------|-----------------|------------------------|------------------|-----------------------------|---------------------|-------------|------------------|
|        |      |         |               |        | SST (°F)             | Conv. Rack BTUH | Para. Rack BTUH | Defrost Interval (Hrs) | Defrost Duration | Total GPM                   | Pressure Drop (psi) | Concent (%) | Liquid Temp (°F) |
| GLDS4R | All  | Main    | Remote-DX     | Type I | 20                   | 1,179           | 1,092           | 4.00                   | 30.00            | N/A                         | N/A                 | N/A         | N/A              |
| GLDS5R | All  | Main    | Remote-Glycol | Type I | N/A                  | 1,566           | 1,450           | 4.00                   | 30.00            | 1.00                        | 2.42                | 35%         | 20.00            |
|        | All  | Main    | Remote-DX     | Type I | 20                   | 1,568           | 1,452           | 4.00                   | 30.00            | N/A                         | N/A                 | N/A         | N/A              |
| GLDS6R | All  | Main    | Remote-DX     | Type I | 20                   | 1,771           | 1,640           | 4.00                   | 30.00            | N/A                         | N/A                 | N/A         | N/A              |
|        | All  | Main    | Remote-Glycol | Type I | N/A                  | 1,771           | 1,640           | 4.00                   | 45.00            | 0.60                        | 1.42                | 35%         | 20.00            |

## INTENDED ENVIRONMENT

Type I - Designed to operate in ambient conditions of 75°F with 55% relative humidity unless noted otherwise under Envt above.

## WARMEST AVERAGE PRODUCT TEMP & INTENDED USE OF ZONES

| Zone | Temp (°F) | Intended Use                     |
|------|-----------|----------------------------------|
| 1    | 40        | Unpackaged refrigerated products |

## REGULATORY

|            |   |
|------------|---|
| All Models | Accordance with AHRI Std 1200<br>ETL Listed to UL 471<br>ETL Listed to CAN/CSA 22.2 No. 120<br>ETL Sanitation to NSF/ANSI 7 |
|------------|---|

## IMPORTANT NOTES

- 1) ELECTRICAL NOTE: If GFCI is required, a GFCI breaker MUST be used in lieu of a GFCI receptacle.
- 2) 50" minimum door entry clearance required (without shipping skid).
- 3) Units must be shimmed during installation to ensure the unit is level and plumb.



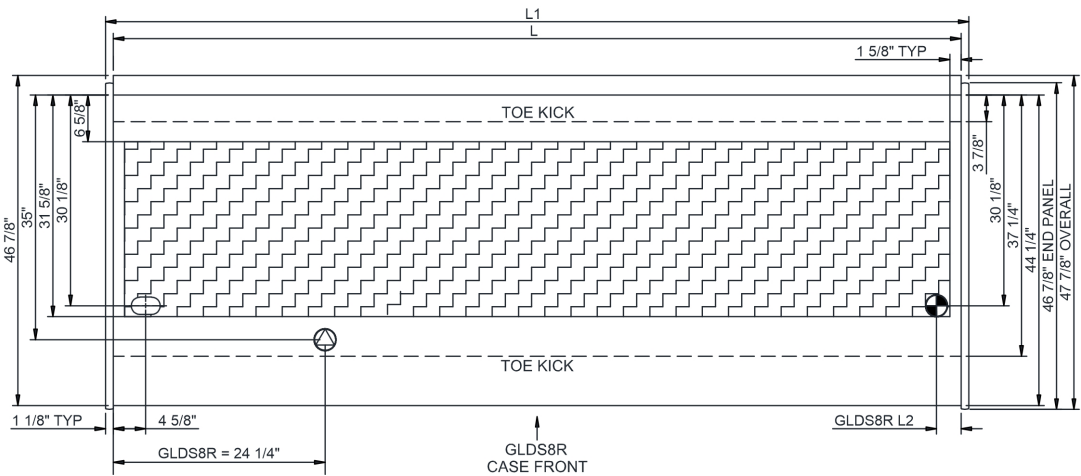
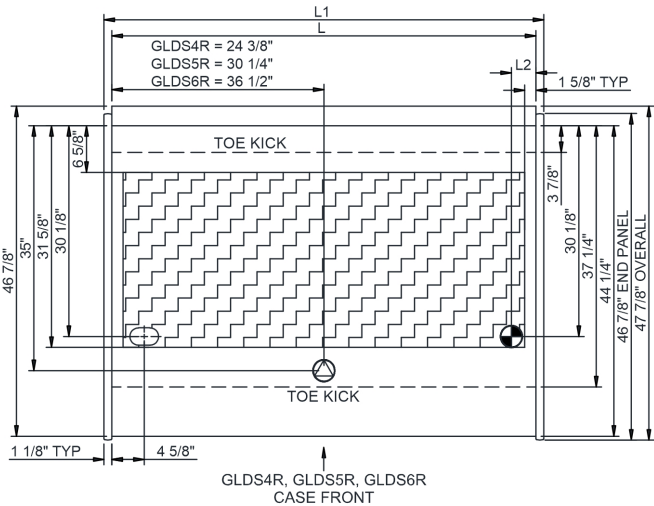
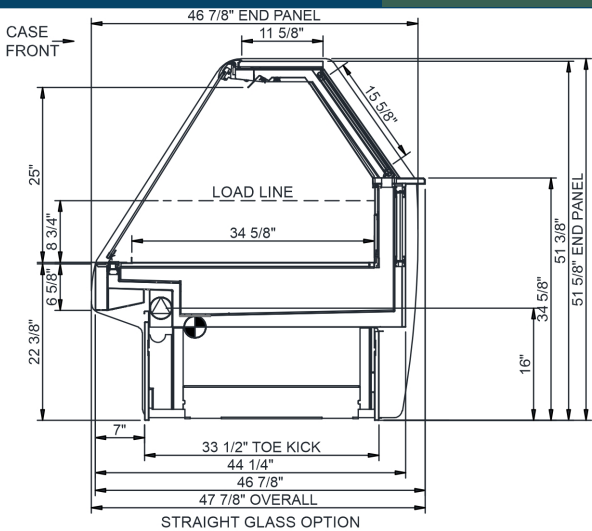
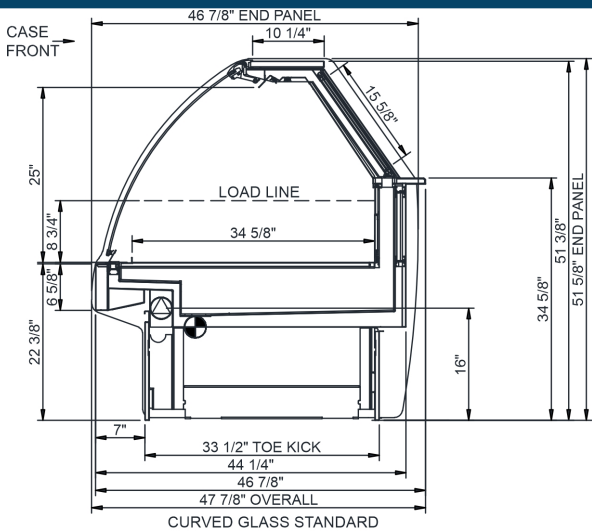
In Accordance with  
**AHRI Std 1200**

# Technical Information

Fusion - GLDS 52"H Refrigerated Service Case

Structural Concepts®

DELIVERING FRESH. ALWAYS.™



NOTE: ALL DIMENSIONS APPROXIMATE

- ELECTRICAL JUNCTION BOX (SUPPLIED WITH 6" LEADS OR POWER CORD).
- LOCATION OF DRAIN TUBE FOR REMOTE REF. ONLY (SUPPLIED WITH 3/4" OR 1 1/2" PVC TUBE).

- REFRIGERATION LINE CONNECTION.
- REMOTE FLOOR SINK & UTILITIES ACCESS AREA.

- SELF-CONTAINED CASE SERVICE ACCESS AREA.
- DRY CASE SERVICE ACCESS AREA.