

# Fusion

GMDSV 52"H Refrigerated Service Case Remote

**Structural Concepts®**

DELIVERING FRESH. ALWAYS.™

- **GMDSV4R** 51"L x 43"D x 51-5/8"H
- **GMDSV5R** 62-7/8"L x 43"D x 51-5/8"H
- **GMDSV6R** 75-3/8"L x 43"D x 51-5/8"H
- **GMDSV8R** 99-3/4"L x 43"D x 51-5/8"H
- **GMDSV10R** 123-3/8"L x 43"D x 51-5/8"H
- **GMDSV12R** 148-1/2"L x 43"D x 51-5/8"H

## Included

- Remote DX refrigeration
- LED top & shelf lights
- One year parts & labor warranty
- One year parts & labor; 5 year compressor warranty
- Stainless steel rear exterior
- Vertical, UV bonded lift-up front glass w/o lock
- Warmest average product temperature of 40°F or less



**GMDSV4R**

Specify	Standard Features	Additional Options
<b>EXTERIOR COLOR</b>	• Laminate (stock colors)	• Laminate (non-stock colors) • Powder coated (stock/non-stock colors) • Powder coated Silversan Black • Stainless steel
<b>INTERIOR COLOR</b>	• Powder coated Silversan Black	• Stainless steel
<b>LOWER FRONT PANEL COLOR</b>	• Powder coated Silversan Black	• Powder coated (stock/non-stock colors) • Stainless steel
<b>BASE SUPPORT</b>	• Rail system for shims (remote)	
<b>BUMPER FRONT</b>	• 1" Boston bumper (specify color)	• 1" Stainless steel plate rail bumper
<b>END PANELS</b>	• Full w/stainless steel mirror interior	• Cutaway w/glass • None (specify per line-up)
<b>SCALE STAND</b>	• None	1. • Scale stand w/ receptacle & CAT5 (specify location) • Scale stand w/ receptacle (specify location)
<b>PRICE TAG MOLDING</b>	• None	• 1" Price tag molding (black or silver) • Universal price tag molding (clear w/ open top)
<b>REAR DOORS</b>	• Clear glass rear sliding doors	• Reflective glass rear sliding doors
<b>SHELVING</b>	• 16" Solid shelf	• 14" & 16" Solid shelving • 14" & 20" Solid shelving
<b>LIGHTS</b>	• LED 3500K w/ frosted lens	• LED 4000K w/ frosted lens • LED nose light
<b>ELECTRICAL CONNECTION</b>	• Electrical leads (remote)	
<b>REFRIGERATION</b>	• Remote DX refrigeration	• Remote w/thermostat, solenoid & TXV
<b>SENSOR</b>	• None	• CPC discharge air sensor (remote)
<b>MISCELLANEOUS</b>		• Front glass lock • Rear door lock
<b>ACCESSORIES</b>		• Angled display steps (n/a w/shelf) • Drain strainer • Rear wrapping board, white Sanalite®

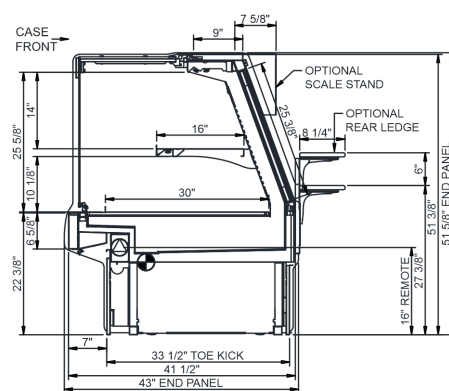
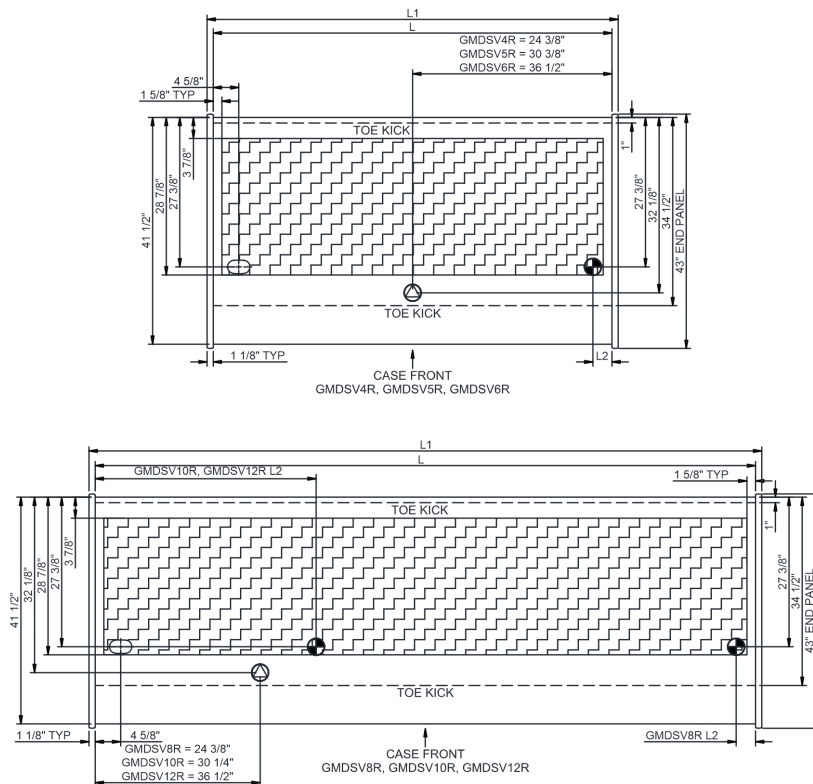
**Option Notes:** 1 - Separate circuit required

**Intended Environment:** Type I - Designed to operate in ambient conditions of 75°F with 55% relative humidity unless noted otherwise in system information below.

Zone	Intended Product To Be Displayed	Warmest Avg Prod Temp ° F
1	Unpackaged refrigerated products	38-40

PLAN VIEW

SIDE VIEW



NOTE: ALL DIMENSIONS APPROXIMATE

⊗ ELECTRICAL JUNCTION BOX  
(SUPPLIED WITH 6" LEADS OR POWER CORD).  
⊙ LOCATION OF DRAIN TUBE FOR REMOTE REF.  
ONLY (SUPPLIED WITH 3/4" OR 1 1/2" PVC TUBE).

⊕ REFRIGERATION LINE CONNECTION.  
⊞ REMOTE FLOOR SINK & UTILITIES  
ACCESS AREA.

⊞ SELF-CONTAINED CASE SERVICE ACCESS AREA.  
⊞ DRY CASE SERVICE ACCESS AREA.

Model Technical Specifications														
Model	L"	L1"	L2"	System Circuit Volts			Phs	Freq	Amps ***	Watts	Wires	NEMA Plug	SST	Conv. Rack BTUH
GMDSV4R	48.75	51.00	3.50	Remote (DX)	Circuit #1	110-120	1	60	1.70	71	2+G	Leads Multiple	20.00	1296
				Remote (GLYCOL 35%)	Circuit #1	110-120	1	60	1.70	71	2+G	Leads Multiple	30.00	1296
				Remote (R744 TRANSCRIT	Circuit #1	110-120	1	60	1.70	71	2+G	Leads Multiple		1296
GMDSV5R	60.63	62.88	3.50	Remote (DX)	Circuit #1	110-120	1	60	2.63	90	2+G	Leads Multiple	20.00	1706
GMDSV6R	73.13	75.38	3.50	Remote (DX)	Circuit #1	110-120	1	60	2.29	99	2+G	Leads Multiple	20.00	2030
				Remote (R744 TRANSCRIT	Circuit #1	110-120	1	60	2.29	99	2+G	Leads Multiple		2030
				Remote (DX)	Circuit #1	110-120	1	60	3.08	173	2+G	Leads Multiple	20.00	2722
GMDSV8R	97.50	99.75	3.50	Remote (DX)	Circuit #1	110-120	1	60	3.96	424	2+G	Leads Multiple	20.00	2722
				Remote (GLYCOL 35%)	Circuit #1	110-120	1	60	3.76	149	2+G	Leads Multiple		2722
				Remote (R744 TRANSCRIT	Circuit #1	110-120	1	60	3.76	149	2+G	Leads Multiple		2722
GMDSV10R	121.13	123.38	40.50	Remote (DX)	Circuit #1	110-120	1	60	6.05	576	2+G	Leads Multiple	20.00	2916
				Remote (GLYCOL 35%)	Circuit #1	110-120	1	60	6.05	576	2+G	Leads Multiple	20.00	2916
				Remote (R744 TRANSCRIT	Circuit #1	110-120	1	60	6.05	576	2+G	Leads Multiple		2916
GMDSV12R	146.25	148.50	45.25	Remote (DX)	Circuit #1	110-120	1	60	4.62	540	2+G	Leads Multiple	20.00	3672
				Remote (GLYCOL 35%)	Circuit #1	110-120	1	60	4.62	540	2+G	Leads Multiple	20.00	3672
				Remote (R744 TRANSCRIT	Circuit #1	110-120	1	60	4.62	540	2+G	Leads Multiple		3672

\*\*\* Does not include electric defrost on freezer models.

#### Regulatory Approvals:

All Models  
 Accordance with AHRI Std 1200  
 ETL Listed to UL 471  
 ETL Listed to CAN/CSA 22.2 No. 120  
 ETL Sanitation to NSF/ANSI 7



In Accordance with  
**AHRI Std 1200**

**DOE 2017**  
 Energy Efficiency  
 Compliant

#### Important Notes:

- Units must be shimmed during installation to ensure the unit is level and plumb.
- Compressor air rear intake, front discharge. Toe kick cannot be blocked.
- Condensate pan with self-contained refig. only.
- Remote doesn't incl Conds unit. Floor drain reqd.
- Remote only available w/rail base w/shims.

**⚠ WARNING:** This product can expose you to chemicals, including Urethane (Ethyl Carbamate), which are known to the State of California to cause cancer and birth defects or other reproductive harm. For more information go to [www.P65Warnings.ca.gov](http://www.P65Warnings.ca.gov).