

Technical Information

Oasis - Refrigerated Self-Service Counter Case

DISCONTINUED

Structural Concepts®

DELIVERING FRESH. ALWAYS.™

DIMENSIONS / SHIPPING

Model	L"	L1"	L2"	Est Wt (lbs)
CO3324R	34.000	36.250	2.375	N/A
CO4324R	45.000	47.250	3.125	N/A
CO5324R	57.000	59.250	3.125	N/A
CO6324R	69.000	71.250	3.125	N/A

ELECTRICAL

Model	System Circuit Volts			Ph	Frq	Rated Load Amps	Min Cir Amps	Max OCP Amps	Watts	Wires	NEMA Plug	Amps Lights	Amps Fans	Amps Anti-Sweats	Amps Misc/Refrig/Heat
CO3324R	Remote (R404A)	Circuit #1	110-120	1	60	1.20	15	15	46	2+G	Leads Multiple	0.70	0.30	0.12	0.08
	Self-Contained (R513A)	Circuit #1	110-120	1	60	12.00	15	15	1,050	2+G	5-15P or L5-15P	0.70	1.00	4.08	7.40
CO4324R	Remote (DX)	Circuit #1	110-120	1	60	1.32	15	15	66	2+G	Leads Multiple	0.70	0.40	0.14	0.08
	Self-Contained (R513A)	Circuit #1	110-120	1	60	12.00	15	15	1,053	2+G	5-15P or L5-15P	0.70	1.00	4.10	7.40
CO5324R	Remote (DX)	Circuit #1	110-120	1	60	1.60	15	15	76	2+G	Leads Multiple	0.70	0.60	0.22	0.08
	Self-Contained (R513A)	Circuit #1	110-120	1	60	16.00	20	20	1,204	2+G	5-20P or L5-20P	0.70	1.20	4.18	11.00
CO6324R	Remote (DX)	Circuit #1	110-120	1	60	1.64	15	15	85	2+G	Leads Multiple	0.70	0.60	0.26	0.08
	Self-Contained (R513A)	Circuit #1	110-120	1	60	16.00	20	20	1,211	2+G	5-20P or L5-20P	0.70	1.20	4.22	11.00

REFRIGERATION

Model	Zone	Section	System	Env't	REMOTE REFRIGERATION					GLYCOL / R744 REFRIGERATION			
					SST (°F)	Conv. Rack BTUH	Para. Rack BTUH	Defrost Interval (Hrs)	Defrost Duration	Total GPM	Pressure Drop (psi)	Concent (%)	Liquid Temp (°F)
CO3324R	All	Refrigerator	Remote-R404A	Type II	20	1,469	1,360	4.00	30.00	N/A	N/A	N/A	N/A
	All	Main	Self-Contained-R513A	Type II	N/A	N/A	N/A	N/A	N/A	N/A	N/A	N/A	N/A
CO4324R	All	Main	Remote-DX	Type II	20	1,944	1,800	4.00	25.00	N/A	N/A	N/A	N/A
	All	Main	Self-Contained-R513A	Type II	N/A	N/A	N/A	N/A	N/A	N/A	N/A	N/A	N/A
CO5324R	All	Refrigerator	Remote-DX	Type II	20	2,592	2,400	4.00	30.00	N/A	N/A	N/A	N/A
	All	Main	Self-Contained-R513A	Type II	N/A	N/A	N/A	N/A	N/A	N/A	N/A	N/A	N/A
CO6324R	All	Main	Remote-DX	Type II	20	2,938	2,720	4.00	25.00	N/A	N/A	N/A	N/A
	All	Main	Self-Contained-R513A	Type II	N/A	N/A	N/A	N/A	N/A	N/A	N/A	N/A	N/A

INTENDED ENVIRONMENT

Type II - Designed to operate in ambient conditions of 80°F and 55% relative humidity unless noted otherwise under Env't above.

WARMEST AVERAGE PRODUCT TEMP & INTENDED USE OF ZONES

Zone	Temp (°F)	Intended Use
1	40	Packaged refrigerated products

IMPORTANT NOTES

- 1) ELECTRICAL NOTE: If GFCI is required, a GFCI breaker MUST be used in lieu of a GFCI receptacle
- 2) 33" Minimum entry door clearance required (w/out shipping skid)
- 3) Performance issues (product temperatures, water on floor, etc.) caused by adverse conditions are not covered by warranty.
- 4) Keep unit at least 15' from exterior doors, overhead HVAC vents, or any air curtain disruption.
- 5) Do not expose unit to direct sunlight or any heat source (ovens, fryers, etc.).
- 6) Compressor air rear intake, front discharge at toe kick. Front and rear panels cannot be blocked. Must remain 4" from wall.

REGULATORY

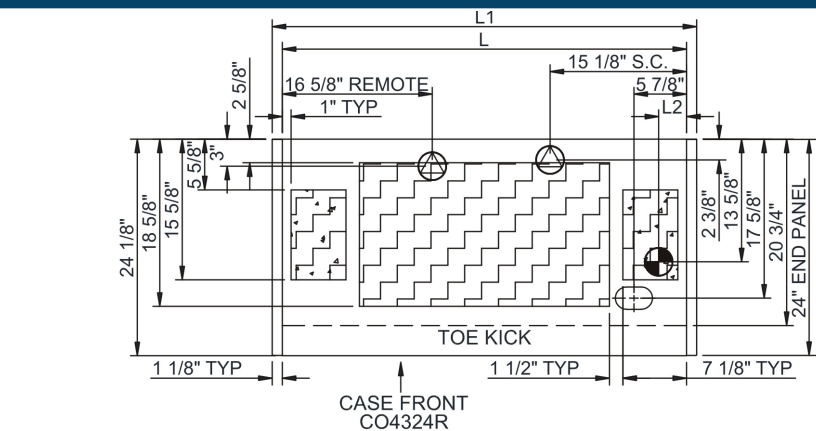
All Models	Accordance with AHRI Std 1200 ETL Listed to UL 471 ETL Listed to CAN/CSA 22.2 No. 120 ETL Sanitation to NSF/ANSI 7
------------	---



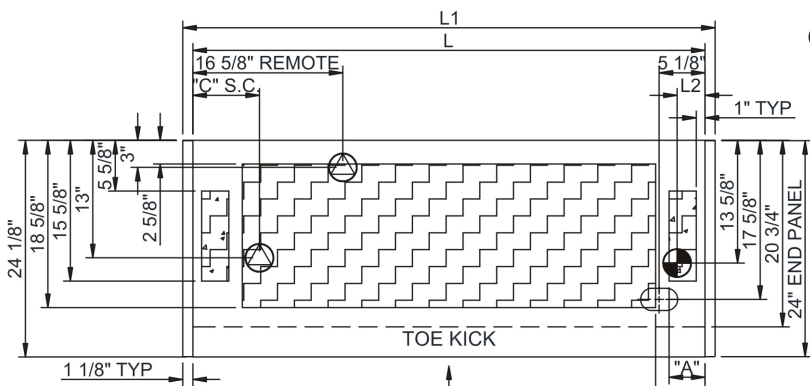
In Accordance with
AHRI Std 1200

Technical Information

Oasis - Refrigerated Self-Service Counter Case

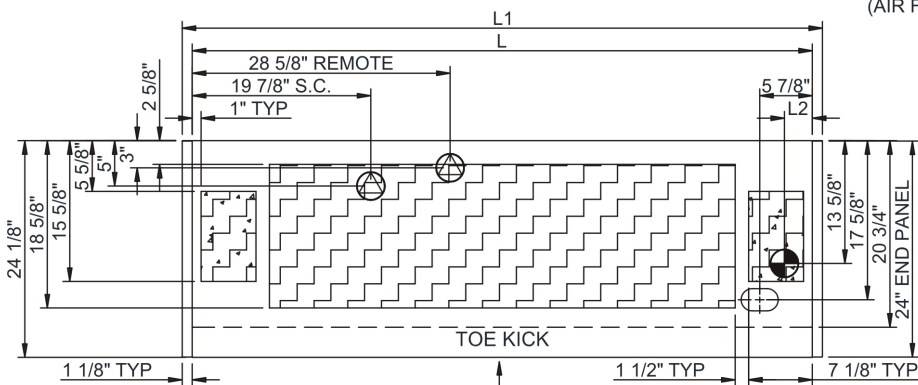


CASE FRONT
CO4324R

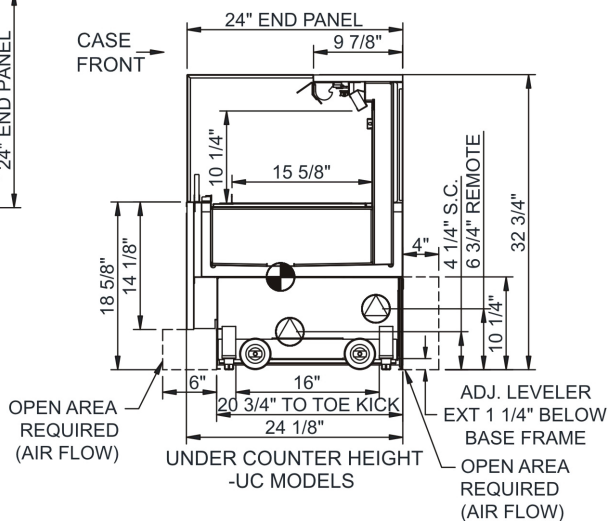
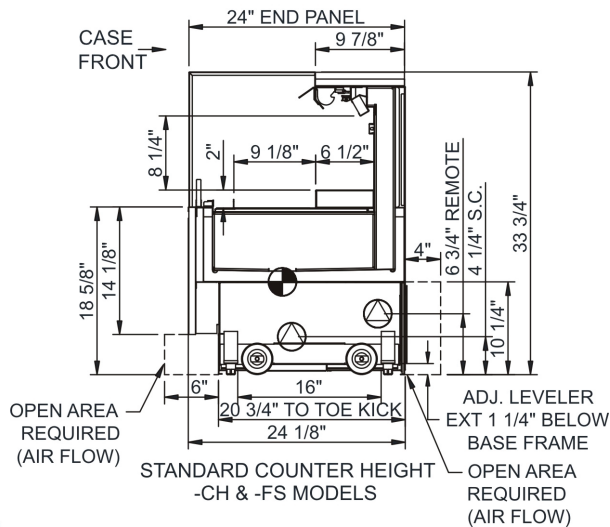


CASE FRONT
CO3324R, CO5324R

	"A"	"B"	"C"
CO3324R	N/A	3 1/8"	5"
CO5324R	4"	5 1/2"	7 3/8"



CASE FRONT
CO6324R



NOTE: ALL DIMENSIONS APPROXIMATE

⊗ ELECTRICAL JUNCTION BOX
(SUPPLIED WITH 6" LEADS OR POWER CORD).
⊙ LOCATION OF DRAIN TUBE FOR REMOTE REF.
ONLY (SUPPLIED WITH 3/4" OR 1 1/2" PVC TUBE).

⊕ REFRIGERATION LINE CONNECTION.
⊞ REMOTE FLOOR SINK & UTILITIES
ACCESS AREA.

⊞ SELF-CONTAINED CASE SERVICE ACCESS AREA.
⊞ DRY CASE SERVICE ACCESS AREA.