

# Technical Information

Oasis - Refrigerated Self-Service Case 24"D - Type II

**DISCONTINUED**

**Structural Concepts®**

DELIVERING FRESH. ALWAYS.™

## DIMENSIONS / SHIPPING

Model	L"	L1"	L2"	Est Wt (lbs)
B3424	32.000	34.500	3.125	N/A
B4524	43.000	45.500	3.125	N/A
B6624	63.875	66.375	3.125	N/A
B8824	85.875	88.375	3.125	N/A

## ELECTRICAL

Model	System Circuit Volts			Ph	Frq	Rated Load Amps	Min Cir Amps	Max OCP Amps	Watts	Wires	NEMA Plug	Amps Lights	Amps Fans	Amps Anti-Sweats	Amps Misc/Refrig/ Heat
B3424	Remote (DX)	Circuit #1	110-120	1	60	1.20	15	15	60	2+G	Leads Single	0.70	0.30	0.12	0.08
	Self-Contained (R513A)	Circuit #1	110-120	1	60	15.64	20	20	1,198	2+G	5-20P or L5-20P	0.70	0.86	4.08	10.00
B4524	Remote (DX)	Circuit #1	110-120	1	60	1.26	15	15	77	2+G	Leads Single	0.70	0.30	0.18	0.08
	Self-Contained (R449A)	Circuit #1	208-240	1	60	10.82	15	15	2,023	2+G	6-15P or L6-15P	N/A	0.86	3.50	6.46
B6624	Remote (DX)	Circuit #1	110-120	1	60	1.92	15	15	130	2+G	Leads Single	0.70	0.90	0.24	0.08
	Self-Contained (R449A)	Circuit #1	208-240	1	60	13.92	20	20	2,593	2+G	6-20P or L6-20P	0.36	1.01	2.30	10.25
B8824	Remote (DX)	Circuit #1	110-120	1	60	2.25	15	15	158	2+G	Leads Single	0.72	1.20	0.33	N/A
	Self-Contained (R449A)	Circuit #1	208-240	1	60	16.00	20	20	3,196	2+G	6-20P or L6-20P	N/A	1.16	3.58	11.00

## REFRIGERATION

Model	Zone	Section	System	Env't	REMOTE REFRIGERATION					GLYCOL / R744 REFRIGERATION			
					SST (°F)	Conv. Rack BTUH	Para. Rack BTUH	Defrost Interval (Hrs)	Defrost Duration	Total GPM	Pressure Drop (psi)	Concent (%)	Liquid Temp (°F)
B3424	All	Refrigerator	Remote-DX	Type II	20	5,098	4,720	4.00	30.00	N/A	N/A	N/A	N/A
	All	Refrigerator	Self-Contained-R513A	Type II	N/A	N/A	N/A	N/A	N/A	N/A	N/A	N/A	N/A
B4524	All	Refrigerator	Remote-DX	Type II	20	5,659	5,240	4.00	25.00	N/A	N/A	N/A	N/A
	All	Refrigerator	Self-Contained-R449A	Type II	N/A	N/A	N/A	N/A	N/A	N/A	N/A	N/A	N/A
B6624	All	Refrigerator	Remote-DX	Type II	20	5,659	5,240	4.00	25.00	N/A	N/A	N/A	N/A
	All	Refrigerator	Self-Contained-R449A	Type II	N/A	N/A	N/A	N/A	N/A	N/A	N/A	N/A	N/A
B8824	All	Main	Self-Contained-R449A	Type II	N/A	N/A	N/A	N/A	N/A	N/A	N/A	N/A	N/A
	All	Main	Remote-DX	Type II	20	11,189	10,360	4.00	25.00	N/A	N/A	N/A	N/A

## INTENDED ENVIRONMENT

Type II - Designed to operate in ambient conditions of 80°F and 55% relative humidity unless noted otherwise under Env't above.

## WARMEST AVERAGE PRODUCT TEMP & INTENDED USE OF ZONES

Zone	Temp (°F)	Intended Use
1	40	Packaged refrigerated products

## IMPORTANT NOTES

- 1) ELECTRICAL NOTE: If GFCI is required, a GFCI breaker MUST be used in lieu of a GFCI receptacle
- 2) Performance issues (product temperatures, water on floor, etc.) caused by adverse conditions are not covered by warranty.
- 3) Keep unit at least 15' from exterior doors, overhead HVAC vents, or any air curtain disruption.
- 4) End panels must be tightly joined or kept at least 6" away from any structure to prevent condensation.
- 5) Do not expose unit to direct sunlight or any heat source (ovens, fryers, etc.).
- 6) Tile floors, low ceilings, or small rooms will increase noise level.
- 7) Compressor air lower front intake and upper front discharge. Front panel cannot be blocked.

## REGULATORY

All Models	Accordance with AHRI Std 1200 ETL Listed to UL 471 ETL Listed to CAN/CSA 22.2 No. 120 ETL Sanitation to NSF/ANSI 7
------------	---



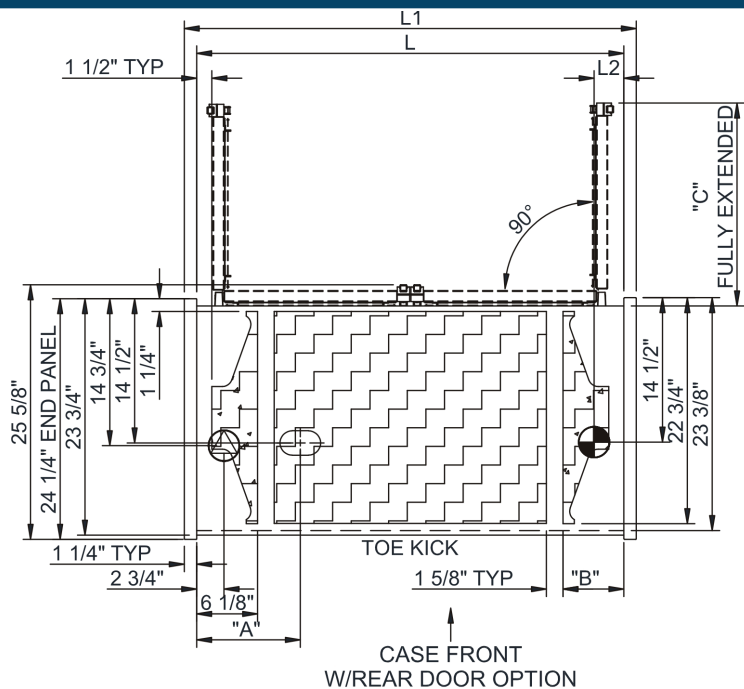
In Accordance with  
**AHRI Std 1200**

# Technical Information

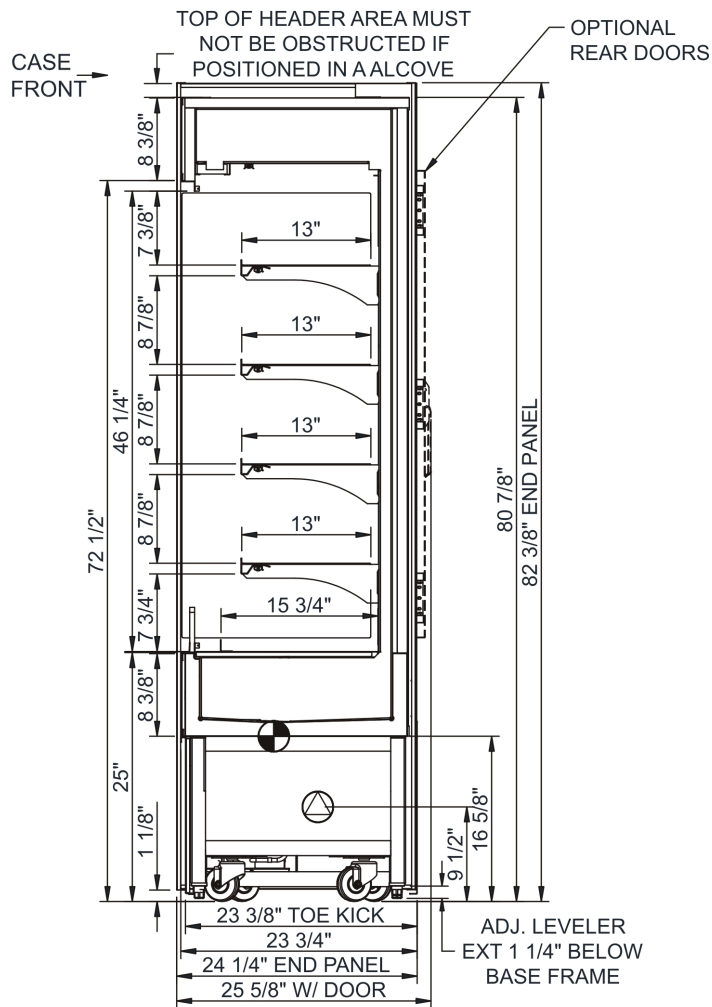
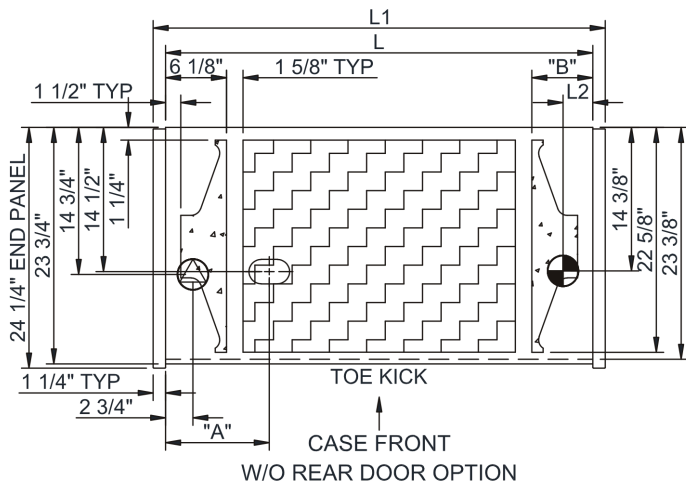
Oasis - Refrigerated Self-Service Case 24"D - Type II

Structural Concepts®



DELIVERING FRESH. ALWAYS.™



	"A"	"B"	"C"
B3424	7"	N/A	29 1/2"
B4524	7"	6 1/8"	20 3/8"
B6624	10 3/8"	6 1/8"	N.A.
B8824	19 3/8"	17 1/2"	N.A.



NOTE: ALL DIMENSIONS APPROXIMATE

 ELECTRICAL JUNCTION BOX  
(SUPPLIED WITH 6" LEADS OR POWER CORD).  
 LOCATION OF DRAIN TUBE FOR REMOTE REF.  
ONLY (SUPPLIED WITH 3/4" OR 1 1/2" PVC TUBE).

 REFRIGERATION LINE CONNECTION.  
 REMOTE FLOOR SINK & UTILITIES  
ACCESS AREA.

 SELF-CONTAINED CASE SERVICE ACCESS AREA.  
 DRY CASE SERVICE ACCESS AREA.