

- **CO34R** 36-1/4"L x 33"D x 46-7/8"H
- **CO44R** 47-1/4"L x 33"D x 46-7/8"H

## Included

- Breeze self-contained refrigeration
- 4"D removable rear wall spacer (not included in depth dimension)
- 6' Straight blade power cord (base exit)
- Blue Fin coated coil
- Condensate pan (self-contained refig. only)
- Exterior solid back panel, black
- Full end panel w/mirror interior (vinyl edge matches interior color)
- Integrated average product temperature of 40°F or less
- LED 3500K top light(s)
- One piece formed ABS plastic tub
- One year parts & labor; 5 year compressor warranty



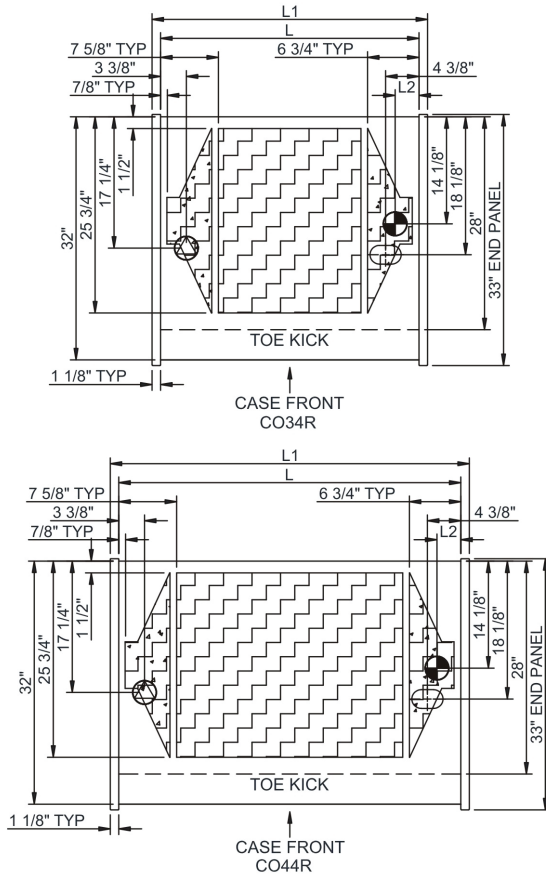
**CO44R**

Specify	Standard Features	Additional Options
<b>EXTERIOR COLOR</b>	<ul style="list-style-type: none"> <li>• Laminate (stock colors)</li> </ul>	<ul style="list-style-type: none"> <li>• Laminate (non-stock colors)</li> <li>• Stainless steel</li> </ul>
<b>INTERIOR COLOR</b>	<ul style="list-style-type: none"> <li>• Powder coated Silversan Black</li> </ul>	<ul style="list-style-type: none"> <li>• Stainless steel</li> </ul>
<b>LOWER FRONT PANEL COLOR</b>	<ul style="list-style-type: none"> <li>• Powder coated Silversan Black</li> </ul>	<ul style="list-style-type: none"> <li>• Stainless steel (must choose stainless exterior)</li> </ul>
<b>BASE SUPPORT</b>	<ul style="list-style-type: none"> <li>• Casters w/ levelers (self-cont.)</li> </ul>	<ul style="list-style-type: none"> <li>• Levelers (only)</li> <li>• Seismic levelers</li> </ul>
<b>SHELVING</b>	<ul style="list-style-type: none"> <li>• None</li> </ul>	<ul style="list-style-type: none"> <li>• Metal shelf, non-lighted</li> </ul>
<b>ELECTRICAL CONNECTION</b>	<ul style="list-style-type: none"> <li>• 6' Straight blade power cord (self-cont.)</li> </ul>	<ul style="list-style-type: none"> <li>• 6' Locking power cord (self-cont.)</li> <li>• Electrical leads (remote)</li> </ul>
<b>REFRIGERATION</b>	<ul style="list-style-type: none"> <li>• Breeze self-contained refrigeration</li> </ul>	<ul style="list-style-type: none"> <li>• Note: Remote doesn't incl Conds unit. Floor drain reqd.</li> <li>• Remote w/thermostat, solenoid &amp; TXV</li> </ul>
<b>MISCELLANEOUS</b>		<ul style="list-style-type: none"> <li>• Second year parts &amp; labor warranty (excludes compressor)</li> </ul>
<b>ACCESSORIES</b>		<ul style="list-style-type: none"> <li>• 2"H Display risers for lower area (n/a w/shelf)</li> <li>• Clean Sweep® coil cleaner (self-cont.)</li> <li>• Night curtain, retractable, non-locking</li> <li>• Removable solid security cover, locking</li> </ul>

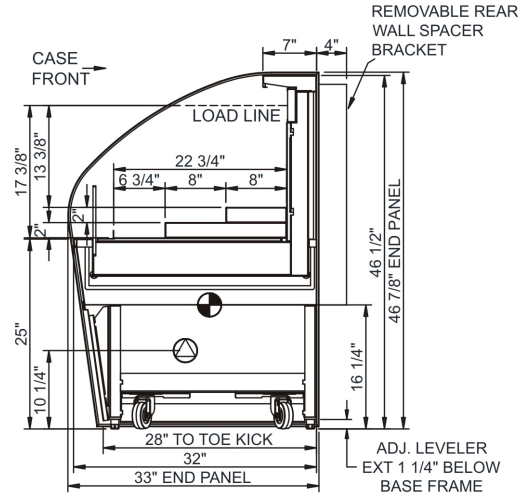
**Intended Environment:** Type I - Designed to operate in ambient conditions of 75°F with 55% relative humidity unless noted otherwise in system information below.

Zone	Intended Product To Be Displayed	Warmest Avg Prod Temp ° F
1	Packaged refrigerated products	40

**PLAN VIEW**



**SIDE VIEW**



**NOTE: ALL DIMENSIONS APPROXIMATE**

- ELECTRICAL JUNCTION BOX (SUPPLIED WITH 6\"/>

Model Technical Specifications															
Model	L"	L1"	L2"	System Circuit Volts		Phs	Freq	Amps ***	Watts	Wires	NEMA Plug	SST	Conv. Rack BTUH	Para. Rack BTUH	Est Wt
CO34R	34.00	36.25	3.13	Remote (DX)	Circuit #1	110-120	1	60	0.74	48	2+G	Leads Multiple	20.00	1927	1784
				Self-Contained (R513A)	Circuit #1	110-120	1	60	5.80	311	N/A	5-15P or L5-15P	N/A	N/A	N/A
CO44R	45.00	47.25	3.13	Remote (DX)	Circuit #1	110-120	1	60	0.86	56	2+G	Leads Multiple	20.00	2484	2300
				Self-Contained (R513A)	Circuit #1	110-120	1	60	5.80	311	2+G	5-20P or L5-20P	N/A	N/A	N/A

\*\*\* Does not include electric defrost on freezer models.

**Regulatory Approvals:**

All Models  
 Accordance with AHRI Std 1200  
 ETL Listed to UL 471  
 ETL Listed to CAN/CSA 22.2 No. 120  
 ETL Sanitation to NSF/ANSI 7



In Accordance with  
**AHRI Std 1200**

**DOE 2017**  
 Energy Efficiency  
 Compliant

**Important Notes:**

- 1) ELECTRICAL NOTE: If GFCI is required, a GFCI breaker MUST be used in lieu of a GFCI receptacle.
- 2) Compressor air front intake, rear discharge. Front panel cannot be blocked. Must remain 4" from wall.

**⚠ WARNING:** This product can expose you to chemicals, including Urethane (Ethyl Carbamate), which are known to the State of California to cause cancer and birth defects or other reproductive harm. For more information go to [www.P65Warnings.ca.gov](http://www.P65Warnings.ca.gov).