

Technical Information

Oasis - Refrigerated Self-Service Island

DISCONTINUED

Structural Concepts®

DELIVERING FRESH. ALWAYS.™

DIMENSIONS / SHIPPING

| Model | L" | L1" | L2" | Est Wt (lbs) |
|---------|-----|--------|--------|--------------|
| FSI656R | N/A | 80.750 | 29.500 | N/A |
| FSI856R | N/A | 99.750 | 29.500 | N/A |

ELECTRICAL

| Model | System Circuit Volts | | | Ph | Frq | Rated Load Amps | Min Cir Amps | Max OCP Amps | Watts | Wires | NEMA Plug | Amps Lights | Amps Fans | Amps Anti-Sweats | Amps Misc/Refrig/Heat |
|---------|------------------------|------------|---------|----|-----|-----------------|--------------|--------------|-------|-------|-----------------|-------------|-----------|------------------|-----------------------|
| FSI656R | Remote (DX) | Circuit #1 | 110-120 | 1 | 60 | 4.67 | 15 | 15 | 260 | 2+G | Leads Single | 2.10 | 1.80 | 0.69 | 0.08 |
| | Self-Contained (R449A) | Circuit #1 | 208-240 | 1 | 60 | 20.26 | 30 | 30 | 3,961 | 2+G | 6-30P or L6-30P | 1.08 | 1.74 | 7.64 | 9.80 |
| FSI856R | Remote (DX) | Circuit #1 | 110-120 | 1 | 60 | 5.43 | 15 | 15 | 336 | 2+G | Leads Multiple | 2.10 | 2.40 | 0.85 | 0.08 |
| | Self-Contained (R449A) | Circuit #1 | 208-240 | 1 | 60 | 27.04 | 40 | 40 | 4,628 | 2+G | 6-30P or L6-30P | 1.08 | 2.32 | 7.64 | 16.00 |

REFRIGERATION

| Model | Zone | Section | System | Env't | REMOTE REFRIGERATION | | | | | GLYCOL / R744 REFRIGERATION | | | |
|---------|------|--------------|----------------------|---------|----------------------|-----------------|-----------------|------------------------|------------------|-----------------------------|---------------------|-------------|------------------|
| | | | | | SST (°F) | Conv. Rack BTUH | Para. Rack BTUH | Defrost Interval (Hrs) | Defrost Duration | Total GPM | Pressure Drop (psi) | Concent (%) | Liquid Temp (°F) |
| FSI656R | All | Refrigerator | Remote-DX | Type II | 20 | 8,554 | 7,920 | 4.00 | 30.00 | N/A | N/A | N/A | N/A |
| | All | Main | Self-Contained-R449A | Type II | N/A | N/A | N/A | N/A | N/A | N/A | N/A | N/A | N/A |
| FSI856R | All | Refrigerator | Remote-DX | Type II | 20 | 9,936 | 9,200 | 4.00 | 30.00 | N/A | N/A | N/A | N/A |
| | All | Refrigerator | Self-Contained-R449A | Type II | N/A | N/A | N/A | N/A | N/A | N/A | N/A | N/A | N/A |

INTENDED ENVIRONMENT

Type II - Designed to operate in ambient conditions of 80°F and 55% relative humidity unless noted otherwise under Env't above.

WARMEST AVERAGE PRODUCT TEMP & INTENDED USE OF ZONES

| Zone | Temp (°F) | Intended Use |
|------|-----------|--------------------------------|
| 1 | 40 | Packaged refrigerated products |

REGULATORY

| | |
|------------|---|
| All Models | Accordance with AHRI Std 1200 ETL Listed to UL 471 ETL Listed to CAN/CSA 22.2 No. 120 ETL Sanitation to NSF/ANSI 7 |
|------------|---|



In Accordance with
AHRI Std 1200

IMPORTANT NOTES

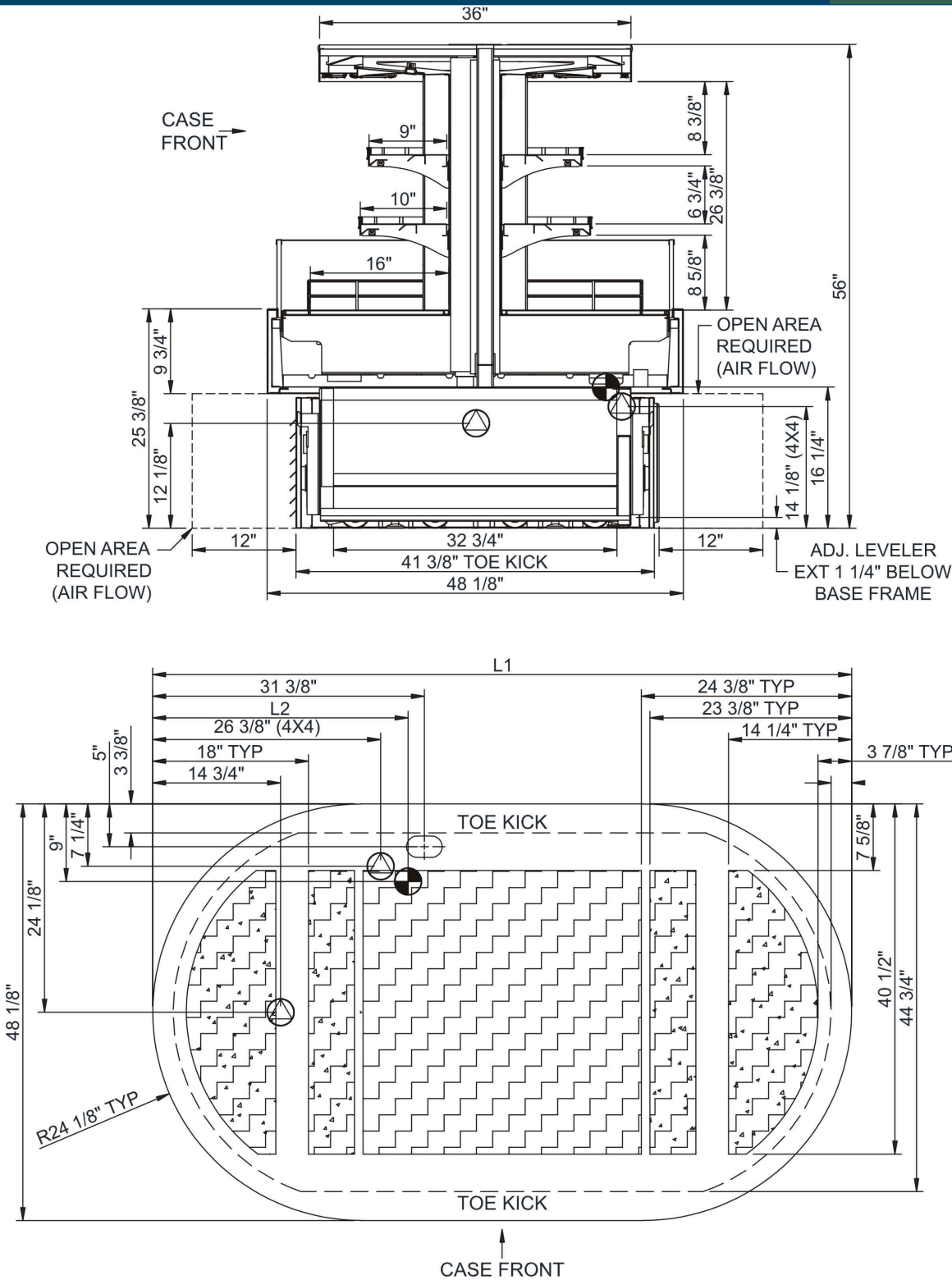
- 1) ELECTRICAL NOTE: If GFCI is required, a GFCI breaker MUST be used in lieu of a GFCI receptacle.
- 2) NOTE: Electrical specs reflect highest Amp draw using lighted shelves option.

Technical Information

Oasis - Refrigerated Self-Service Island

Structural Concepts®

DELIVERING FRESH. ALWAYS.™



NOTE: ALL DIMENSIONS APPROXIMATE

- | | | |
|---|---|---|
|  ELECTRICAL JUNCTION BOX (SUPPLIED WITH 6" LEADS OR POWER CORD). |  REFRIGERATION LINE CONNECTION. |  SELF-CONTAINED CASE SERVICE ACCESS AREA. |
|  LOCATION OF DRAIN TUBE FOR REMOTE REF. ONLY (SUPPLIED WITH 3/4" OR 1 1/2" PVC TUBE). |  REMOTE FLOOR SINK & UTILITIES ACCESS AREA. |  DRY CASE SERVICE ACCESS AREA. |