

Oasis

High Environment Refrigerated Self-Service Case
40°F Product In Environments Up To 85°F/60% RH

DISCONTINUED

Structural Concepts®

DELIVERING FRESH. ALWAYS.™

- **HECO37R** 36-1/2"L x 33-1/4"D x 82-1/8"H
- **HECO47R** 47-1/2"L x 33-1/4"D x 82-1/8"H
- **HECO57R** 59-1/2"L x 33-1/4"D x 82-1/8"H
- **HECO67R** 71-1/2"L x 33-1/4"D x 82-1/8"H

Included

- Breeze~E (Type-II) self-contained refrigeration
- 4"D removable rear wall spacer (not included in depth dimension)
- Condensate pan (self-contained refig. only)
- E-Coated evaporator coil
- Environmental door system w/ Roll-down security cover, locking
- Integrated average product temperature of 40°F or less
- LED 3500K top light(s)
- One piece formed ABS plastic tub
- One year parts & labor; 5 year compressor warranty
- Shelving removable and adjustable on 1" centers



HECO37R

Specify	Standard Features	Additional Options
EXTERIOR COLOR	• Laminate (stock colors)	• Laminate (non-stock colors) • Stainless steel
INTERIOR COLOR	• Powder coated Silversan Black	• Stainless steel
LOWER FRONT PANEL COLOR	• Powder coated Silversan Black	• Stainless steel (must choose stainless exterior)
REAR EXTERIOR COLOR	• Black	• Stainless steel
BASE SUPPORT	• Casters w/ levelers	• Levelers (only) • Seismic levelers
END PANELS	• Full w/stainless steel mirror interior	• Cutaway w/glass
REAR DOORS	• None (solid back panel)	• Rear loading hinged doors, locking
SHELVING	• Metal shelves, non-lighted	• Metal shelves, lighted (LED 3500K)
ELECTRICAL CONNECTION	• 6' Straight blade power cord (base exit)	• 6' Locking blade power cord (base exit) • 6' Locking blade power cord (top exit) • 6' Straight blade power cord (top exit)
REFRIGERATION	• Breeze~E (Type-II) self-contained refrigeration	
MISCELLANEOUS		• Case height wall spacer bracket (specify BL or SS) • Second year parts & labor warranty (excludes compressor)
ACCESSORIES		• Clean Sweep® coil cleaner (self-cont.) • Price tag molding (matches interior color)

Option Notes: 1 - HECO37R - Specify service LH or RH hinge

Oasis

High Environment Refrigerated Self-Service Case
40°F Product In Environments Up To 85°F/60% RH

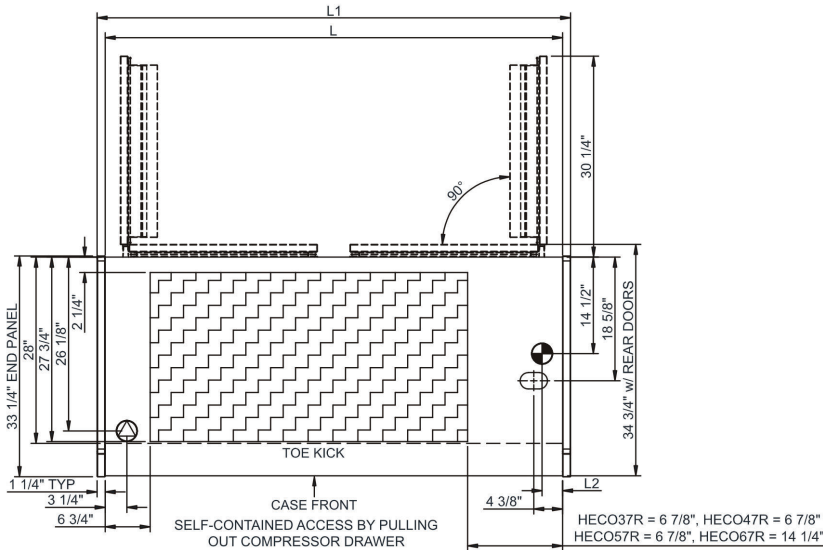
Structural Concepts®

DELIVERING FRESH. ALWAYS.™

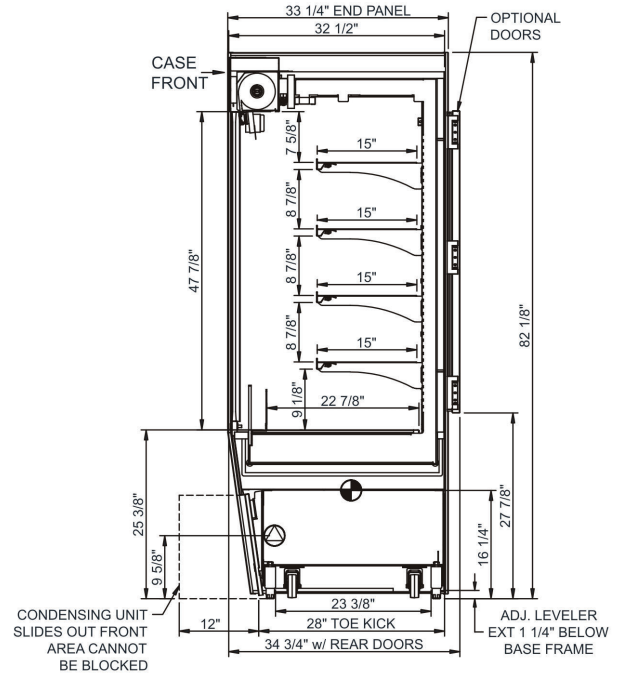
Intended Environment: Type III - Designed to operate in ambient conditions of 85°F and 60% relative humidity unless noted otherwise in system information below.

Zone	Intended Product To Be Displayed	Warmest Avg Prod Temp ° F
1	Packaged refrigerated products	40


PLAN VIEW




SIDE VIEW



NOTE: ALL DIMENSIONS APPROXIMATE

 ELECTRICAL JUNCTION BOX
(SUPPLIED WITH 6" LEADS OR POWER CORD).

 LOCATION OF DRAIN TUBE FOR REMOTE REF.
ONLY (SUPPLIED WITH 3/4" OR 1 1/2" PVC TUBE).

 REFRIGERATION LINE CONNECTION.

 REMOTE FLOOR SINK & UTILITIES
ACCESS AREA.

 SELF-CONTAINED CASE SERVICE ACCESS AREA.

 DRY CASE SERVICE ACCESS AREA.

Model Technical Specifications

Model Technical Specifications																
Model	L"	L1"	L2"	System Circuit Volts			Phs	Freq	Amps ***	Watts	Wires	NEMA Plug	SST	Conv. Rack BTUH	Para. Rack BTUH	Est Wt
HECO37R	34.00	36.50	3.13	Self-Contained (R449A)	Circuit #1	110-120	1	60	16.00	1,616	2+G	5-20P or L5-20P	N/A	N/A	N/A	900
HECO47R	45.00	47.50	3.13	Self-Contained (R449A)	Circuit #1	208-240	1	60	10.80	2,025	2+G	6-20P or L6-20P	N/A	N/A	N/A	1,000
HECO57R	57.00	59.50	3.13	Self-Contained (R449A)	Circuit #1	208-240	1	60	15.31	2,796	2+G	6-20P or L6-20P	N/A	N/A	N/A	1,100
HECO67R	69.00	71.50	3.13	Self-Contained (R449A)	Circuit #1	208-240	1	60	15.65	2,812	2+G	6-20P or L6-20P	N/A	N/A	N/A	1,200

*** Does not include electric defrost on freezer models.

Regulatory Approvals:

All Models
Accordance with AHRI Std 1200
ETL Listed to UL 471
ETL Listed to CAN/CSA 22.2 No. 120
ETL Sanitation to NSF/ANSI 7



In Accordance with
AHRI Std 1200

DOE 2017
Energy Efficiency
Compliant

Important Notes:

- 1) ELECTRICAL NOTE: If GFCI is required, a GFCI breaker MUST be used in lieu of a GFCI receptacle
- 2) Performance issues (product temperatures, water on floor, etc.) caused by adverse conditions are not covered by warranty.
- 3) Keep unit at least 15' from exterior doors, overhead HVAC vents, or any air curtain disruption.
- 4) End panels must be tightly joined or kept at least 6" away from any structure to prevent condensation.
- 5) Do not expose unit to direct sunlight or any heat source (ovens, fryers, etc.).
- 6) Keep at least 8" of clearance above unit for air discharge (self-contained only).
- 7) Tile floors, low ceilings, or small rooms will increase noise level. Remote refrigeration recommended.
- 8) Compressor air front intake, rear discharge. Front panel cannot be blocked. Must remain 4" from wall.

⚠ WARNING: This product can expose you to chemicals, including Urethane (Ethyl Carbamate), which are known to the State of California to cause cancer and birth defects or other reproductive harm. For more information go to www.P65Warnings.ca.gov.