

Oasis

High Envir. Refrig. Self-Service Dual Sided Case
40°F Product In Environments Up To 85°F/60% RH

DISCONTINUED

Structural Concepts®
DELIVERING FRESH. ALWAYS.™

- **HEFSC463R** 47-1/4"L x 53-1/8"D x 70-1/4"H
- **HEFSC663R** 75-1/2"L x 53-1/8"D x 70-1/4"H

Included

- Breeze~E (Type-II) self-contained refrigeration
- Casters w/ levelers
- Compressor air intake in one side & out other side. All louvered panels cannot be blocked
- E-Coated evaporator coil
- Environmental door system w/ Roll-down security cover, locking
- LED 3500K top light(s)
- NOTE: Electrical specs reflect highest Amp draw using lighted shelves option
- One year parts & labor; 5 year compressor warranty
- Price tag molding (matches interior color)
- Removable deck pans provide complete access to evaporator coil &



HEFSC463R

Specify	Standard Features	Additional Options
EXTERIOR COLOR	• Laminate (stock colors)	• Laminate (non-stock colors) • Stainless steel
INTERIOR COLOR	• Powder coated Silversan Black	• Stainless steel
LOWER FRONT PANEL COLOR	• Powder coated Silversan Black	• Stainless steel (must choose stainless exterior)
END PANELS	• Full w/stainless steel mirror interior	• Cutaway w/glass
SHELVING	• Non-adjustable metal shelves, non-lighted	• Non-adjustable metal shelves, lighted (LED 3500K)
ELECTRICAL CONNECTION	• 6' Straight blade power cord (self-cont.)	• 6' Locking power cord (self-cont.)
REFRIGERATION	• Breeze~E (Type-II) self-contained refrigeration	

Oasis

High Envir. Refrig. Self-Service Dual Sided Case
40°F Product In Environments Up To 85°F/60% RH

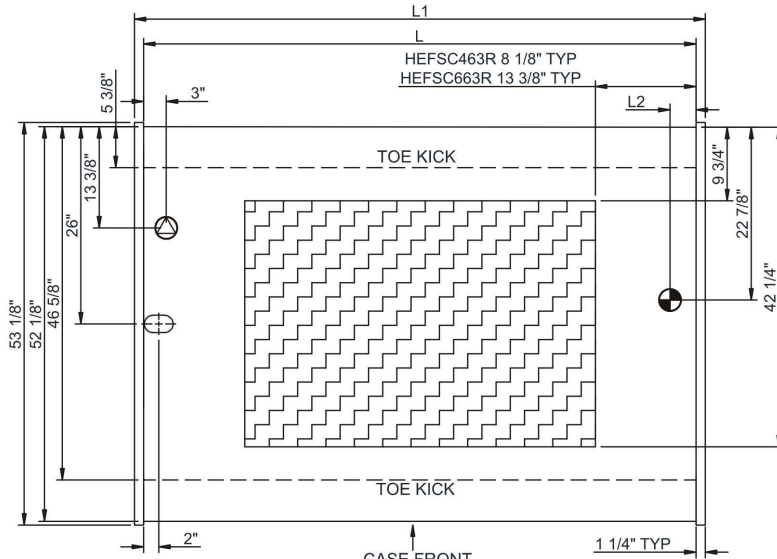
Structural Concepts®

DELIVERING FRESH. ALWAYS.™

Intended Environment: Type III - Designed to operate in ambient conditions of 85°F and 60% relative humidity unless noted otherwise in system information below.

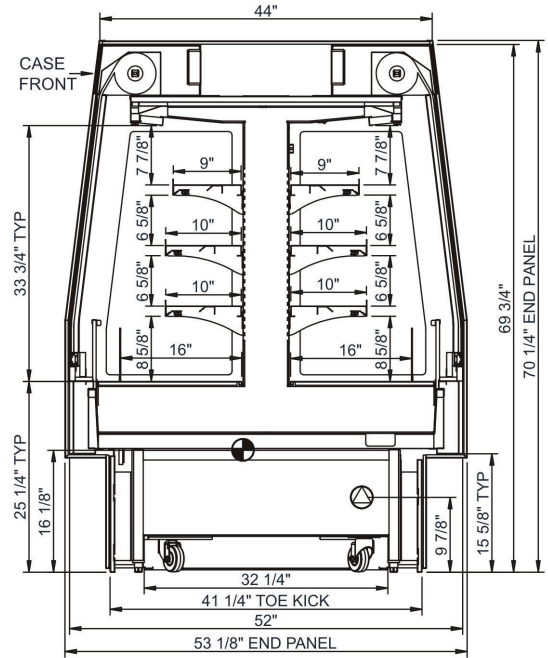
Zone	Intended Product To Be Displayed	Warmest Avg Prod Temp ° F
1	Packaged refrigerated products	40

PLAN VIEW





NOTE: SELF-CONTAINED ACCESS ONLY BY PULLING OUT COMPRESSOR

SIDE VIEW



NOTE: ALL DIMENSIONS APPROXIMATE

 ELECTRICAL JUNCTION BOX
(SUPPLIED WITH 6" LEADS OR POWER CORD).

 LOCATION OF DRAIN TUBE FOR REMOTE REF.
ONLY (SUPPLIED WITH 3/4" OR 1 1/2" PVC TUBE).

 REFRIGERATION LINE CONNECTION.

 REMOTE FLOOR SINK & UTILITIES
ACCESS AREA.

 SELF-CONTAINED CASE SERVICE ACCESS AREA.

 DRY CASE SERVICE ACCESS AREA.

Model Technical Specifications

Model	L"	L1"	L2"	System Circuit Volts		Phs	Freq	Amps ***	Watts	Wires	NEMA Plug	SST	Conv. Rack BTU/H	Para. Rack BTU/H	Est Wt
HEFSC463R	44.75	47.25	21.00	Self-Contained (R449A)	Circuit #1	208-240	1	60	14.97	2,062	2+G	6-20P or L6-20P	N/A	N/A	1,300
HEFSC663R	73.00	75.50	3.50	Self-Contained (R449A)	Circuit #1	208-240	1	60	24.00	4,694	2+G	6-30P or L6-30P	N/A	N/A	1,900

*** Does not include electric defrost on freezer models.

Regulatory Approvals:

All Models
Accordance with AHRI Std 1200
ETL Listed to UL 471
ETL Listed to CAN/CSA 22.2 No. 120
ETL Sanitation to NSF/ANSI 7



In Accordance with
AHRI Std 1200

DOE 2017
Energy Efficiency
Compliant

Important Notes:

- 1) ELECTRICAL NOTE: If GFCI is required, a GFCI breaker MUST be used in lieu of a GFCI receptacle
- 2) Electrical specs reflect highest Amp draw using lighted shelves option

⚠ WARNING: This product can expose you to chemicals, including Urethane (Ethyl Carbamate), which are known to the State of California to cause cancer and birth defects or other reproductive harm. For more information go to www.P65Warnings.ca.gov.