

• FSE45R 37"L x 51-1/2"D x 61-1/2"H

Included

- Breeze~E (Type-II) self-contained refrigeration
- 1" bumper, double strip (specify color)
- Full end panel w/mirror interior
- Integrated average product temperature of 40°F or less
- LED 4000K top light(s)
- One year parts & labor; 5 year compressor warranty
- Price tag molding (matches interior color)
- Removable deck pans provide complete access to evaporator coil & refrigeration connections
- Shelving removable and adjustable on 1" centers

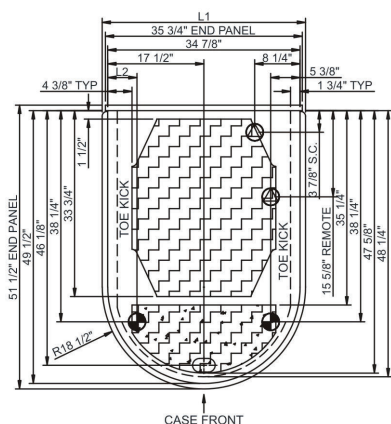


Specify	Standard Features	Additional Options
EXTERIOR COLOR	<ul style="list-style-type: none">• Laminate (stock colors)	<ul style="list-style-type: none">• Laminate (non-stock colors)• Stainless steel
INTERIOR COLOR	<ul style="list-style-type: none">• Powder coated Silversan Black	<ul style="list-style-type: none">• Stainless steel
LOWER FRONT PANEL COLOR	<ul style="list-style-type: none">• Powder coated Silversan Black	<ul style="list-style-type: none">• Stainless steel (must choose stainless exterior)
BASE	<ul style="list-style-type: none">• Casters w/ levelers (self-cont.)	<ul style="list-style-type: none">• Levelers (only)
SHELVING	<ul style="list-style-type: none">• Metal shelves (3), non-lighted	<ul style="list-style-type: none">• Metal shelves (2), lighted (LED 4000K)• Metal shelves (2), non-lighted• Metal shelves (3), lighted (LED 4000K)
ELECTRICAL CONNECTION	<ul style="list-style-type: none">• 6' Straight blade power cord (self-cont.)	<ul style="list-style-type: none">• 6' Locking power cord (self-cont.)• Electrical leads (remote)
REFRIGERATION	<ul style="list-style-type: none">• Breeze~E (Type-II) self-contained refrigeration	<ul style="list-style-type: none">• Note: Remote doesn't incl Conds unit. Floor drain reqd.• Remote w/thermostat, solenoid & TXV
MISCELLANEOUS		<ul style="list-style-type: none">• Condensate pump (self-cont.)• Second year parts & labor warranty (excludes compressor)
ACCESSORIES		<ul style="list-style-type: none">• Clean Sweep® coil cleaner (self-cont.)

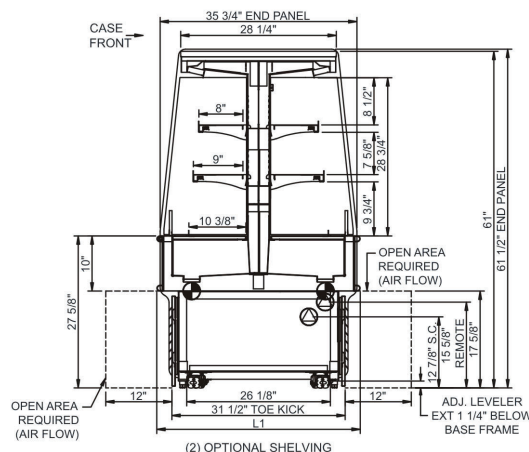
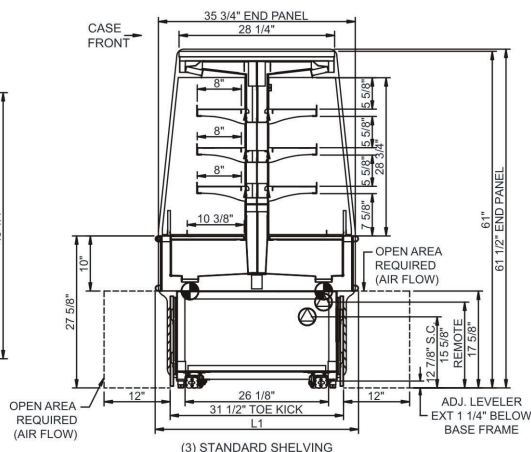
Intended Environment: Type II - Designed to operate in ambient conditions of 80°F and 55% relative humidity unless noted otherwise in system information below.

Zone	Intended Product To Be Displayed	Warmest Avg Prod Temp ° F
1	Packaged refrigerated products	40

PLAN VIEW



SIDE VIEW



NOTE: ALL DIMENSIONS APPROXIMATE

- ELECTRICAL JUNCTION BOX**
(SUPPLIED WITH 6" LEADS OR POWER CORD).
LOCATION OF DRAIN TUBE FOR REMOTE REF.
ONLY (SUPPLIED WITH 3/4" OR 1 1/2" PVC TUBE).

- REFRIGERATION LINE CONNECTION.**
REMOTE FLOOR SINK & UTILITIES
ACCESS AREA.

- SELF-CONTAINED CASE SERVICE ACCESS AREA.**
DRY CASE SERVICE ACCESS AREA.

Model Technical Specifications																
Model	L"	L1"	L2"	System Circuit Volts			Phs	Freq	Amps ***	Watts	Wires	NEMA Plug	SST	Conv. Rack RTU/H	Para. Rack RTU/H	Est Wt
FSE45R	N/A	37.00	.00	Remote (N/A)			1	60	12.00	1,554	2+G	Leads Single	-	0	0	950
				Self-Contained (R449A)			Circuit #1	208-240	1	60	15.84	2,845	2+G	6-20P or L6-20P	N/A	N/A

*** Does not include electric defrost on freezer models.

Regulatory Approvals:

All Models
 Accordance with AHRI Std 1200
 ETL Listed to UL 471
 ETL Listed to CAN/CSA 22.2 No. 120
 ETL Sanitation to NSF/ANSI 7



In Accordance with
AHRI Std 1200

DOE 2017
Energy Efficiency
Compliant

Important Notes:

- 1) ELECTRICAL NOTE: If GFCI is required, a GFCI breaker MUST be used in lieu of a GFCI receptacle
- 2) 37" minimum door entry clearance required (without shipping skid).
- 3) Units are supplied with levelers. They must be adjusted during installation to ensure the unit is level and plumb. Dimensions reflect levelers extended 1 1/4".
- 4) Performance issues (product temperatures, water on floor, etc.) caused by adverse conditions are not covered by warranty.
- 5) Keep unit at least 15' from exterior doors, overhead HVAC vents, or any air curtain disruption.
- 6) End panels must be tightly joined or kept at least 6" away from any structure to prevent condensation.
- 7) Do not expose unit to direct sunlight or any heat source (ovens, fryers, etc.).
- 8) Compressor air intake in one side & out other side. All louvered panels cannot be blocked.

⚠ WARNING: This product can expose you to chemicals, including Urethane (Ethyl Carbamate), which are known to the State of California to cause cancer and birth defects or other reproductive harm. For more information go to www.P65Warnings.ca.gov.