

Fusion

DISCONTINUED

GMGV 52"H Refrigerated Service Case - Models To Be Discontinued 11.1.24

Structural Concepts®
DELIVERING FRESH. ALWAYS.™

• GMGV5

(Lengths do not include 1-1/8" end panels)
60-5/8"L x 43"D x 51-5/8"H

Included

- Gravity coil
- LED top light
- One year parts & labor warranty
- Stainless steel rear exterior
- Vertical, UV bonded lift-up front glass w/o lock
- Warmest average product temperature of 40°F or less



GMGV4

Specify	Standard Features	Additional Options
EXTERIOR COLOR	<ul style="list-style-type: none">• Laminate (stock colors)	<ul style="list-style-type: none">• Laminate (non-stock colors)• Powder coated (stock/non-stock colors)• Powder coated Silversan Black• Stainless steel
INTERIOR COLOR	<ul style="list-style-type: none">• Stainless steel interior	
LOWER FRONT PANEL COLOR	<ul style="list-style-type: none">• Powder coated Silversan Black	<ul style="list-style-type: none">• Powder coated (stock/non-stock colors)• Stainless steel
BASE SUPPORT	<ul style="list-style-type: none">• Rail system for shims (remote)	
BUMPER FRONT	<ul style="list-style-type: none">• 1" Boston bumper (specify color)	<ul style="list-style-type: none">• 1" Stainless steel plate rail bumper
DISPLAY	<ul style="list-style-type: none">• Wire rack deck	<ul style="list-style-type: none">• Ice pans, requires floor drain
END PANELS	<ul style="list-style-type: none">• Full w/stainless steel mirror interior	<ul style="list-style-type: none">• Cutaway w/glass• None (specify per line-up)
SCALE STAND	<ul style="list-style-type: none">• None	<ul style="list-style-type: none">• Scale stand w/ receptacle & CAT5 (specify location)• Scale stand w/ receptacle (specify location)
REAR DOORS	<ul style="list-style-type: none">• Clear glass rear sliding doors	<ul style="list-style-type: none">• Reflective glass rear sliding doors
LIGHTS	<ul style="list-style-type: none">• LED 4000K w/ frosted lens	
ELECTRICAL CONNECTION	<ul style="list-style-type: none">• Electrical leads (remote)	
REFRIGERATION	<ul style="list-style-type: none">• Remote DX refrigeration	<ul style="list-style-type: none">• Remote w/thermostat, solenoid & TXV
SENSOR	<ul style="list-style-type: none">• None	<ul style="list-style-type: none">• CPC discharge air sensor (remote)
MISCELLANEOUS		<ul style="list-style-type: none">• Front glass lock• Rear door lock
ACCESSORIES		<ul style="list-style-type: none">• Drain strainer• Rear wrapping board, white Sanalite®

Option Notes: 1 - Separate circuit required

Fusion

GMGV 52"H Refrigerated Service Case - Models To Be Discontinued 11.1.24

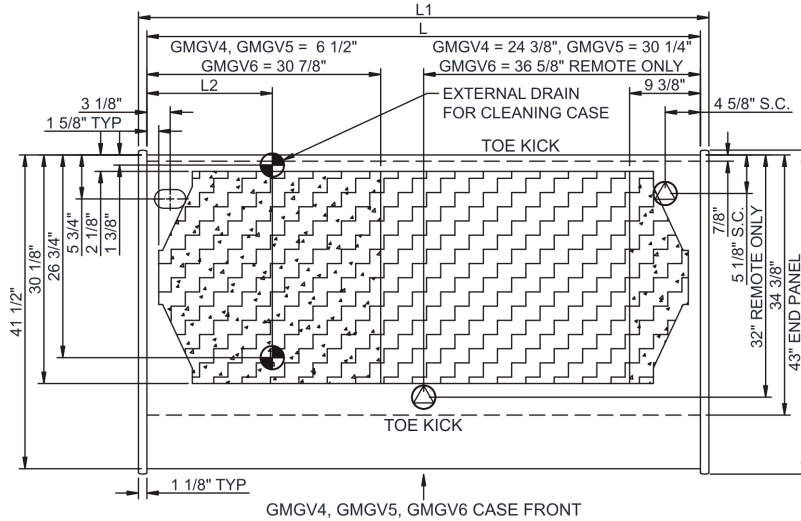
Structural Concepts®

DELIVERING FRESH. ALWAYS.™

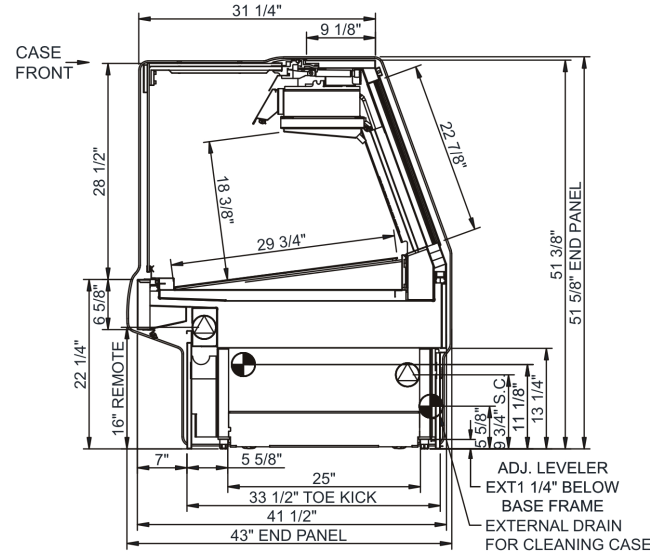
Intended Environment: Type I - Designed to operate in ambient conditions of 75°F with 55% relative humidity unless noted otherwise in system information below.

Zone	Intended Product To Be Displayed	Warmest Avg Prod Temp ° F
1	Unpackaged refrigerated products	38

PLAN VIEW



SIDE VIEW



NOTE: ALL DIMENSIONS APPROXIMATE

⊗ ELECTRICAL JUNCTION BOX
(SUPPLIED WITH 6" LEADS OR POWER CORD).
⊗ LOCATION OF DRAIN TUBE FOR REMOTE REF.
ONLY (SUPPLIED WITH 3/4" OR 1 1/2" PVC TUBE).

⊕ REFRIGERATION LINE CONNECTION.
⊕ REMOTE FLOOR SINK & UTILITIES
ACCESS AREA.

⊗ SELF-CONTAINED CASE SERVICE ACCESS AREA.
⊗ DRY CASE SERVICE ACCESS AREA.

Model Technical Specifications																
Model	L"	L1"	L2"	System Circuit Volts			Phs	Freq	Amps ***	Watts	Wires	NEMA Plug	SST	Conv. Rack BTU/H	Para. Rack BTU/H	Est Wt
GMGV5	60.63	62.88	13.38	Remote Blower (DX)	Circuit #1	110-120	1	60	1.79	68	2+G	Leads Multiple	20.00	1521	1408	1,300
				Remote Gravity (DX)	Circuit #1	110-120	1	60	1.48	25	2+G	Leads Multiple	20.00	1521	1408	

*** Does not include electric defrost on freezer models.

Regulatory Approvals:	
All Models	Accordance with AHRI Std 1200 ETL Listed to UL 471 ETL Listed to CAN/CSA 22.2 No. 120 ETL Sanitation to NSF/ANSI 7



In Accordance with
AHRI Std 1200

DOE 2017
Energy Efficiency
Compliant

Important Notes:

- 1) ELECTRICAL NOTE: If GFCI is required, a GFCI breaker MUST be used in lieu of a GFCI receptacle.
- 2) 45" minimum door entry clearance required (without shipping skid).
- 3) Units must be shimmed during installation to ensure the unit is level and plumb.

⚠ WARNING: This product can expose you to chemicals, including Urethane (Ethyl Carbamate), which are known to the State of California to cause cancer and birth defects or other reproductive harm. For more information go to www.P65Warnings.ca.gov.