

Technical Information

Fusion - GP Combination Prep Case

DISCONTINUED

Structural Concepts®

DELIVERING FRESH. ALWAYS.™

DIMENSIONS / SHIPPING

	L"	L1"	L2"	Est Wt (lbs)
GP841RR	97.500	99.750	3.500	1,700

ELECTRICAL

Model	System Circuit Volts			Ph	Frq	Rated Load Amps	Min Cir Amps	Max OCP Amps	Watts	Wires	NEMA Plug	Amps Lights	Amps Fans	Amps Anti-Sweats	Amps Misc/Refrig/Heat
GP841RR	Remote (DX)	Circuit #1	110-120	1	60	5.86	15	15	656	2+G	Leads Multiple	2.51	1.90	1.45	N/A
	Remote (DX)	Circuit #1	110-120	1	60	7.52	15	15	568	2+G	Leads Multiple	2.51	1.90	3.03	0.08
	Self-Contained (R449A)	Circuit #1	120/230V	1	60	15.55	20	20	2,712	3+G	14-20P or L14-20P	2.10	2.69	4.86	8.00

REFRIGERATION

Model	Zone	Section	System	Env't	REMOTE REFRIGERATION					GLYCOL / R744 REFRIGERATION			
					SST (°F)	Conv. Rack BTUH	Para. Rack BTUH	Defrost Interval (Hrs)	Defrost Duration	Total GPM	Pressure Drop (psi)	Concent (%)	Liquid Temp (°F)
GP841RR	All	Main	Remote-DX	Type I	20	7,690	7,120	4.00	25.00	N/A	N/A	N/A	N/A
	All	Main	Remote-DX	Type I	20	7,690	7,120	4.00	25.00	N/A	N/A	N/A	N/A
	All	Main	Self-Contained-R449A	Type I	N/A	N/A	N/A	N/A	N/A	N/A	N/A	N/A	N/A

INTENDED ENVIRONMENT

Type I - Designed to operate in ambient conditions of 75°F with 55% relative humidity unless noted otherwise under Env't above.

WARMEST AVERAGE PRODUCT TEMP & INTENDED USE OF ZONES

Zone	Temp (°F)	Intended Use
1	40	Packaged / unpackaged refrigerated products

IMPORTANT NOTES

- 1) ELECTRICAL NOTE: If GFCI is required, a GFCI breaker MUST be used in lieu of a GFCI receptacle
- 2) 55" minimum door entry clearance required (without shipping skid).
- 3) Units must be shimmed during installation to ensure the unit is level and plumb.

REGULATORY

All Models	Accordance with AHRI Std 1200 ETL Listed to UL 471 ETL Listed to CAN/CSA 22.2 No. 120 ETL Sanitation to NSF/ANSI 7
------------	---

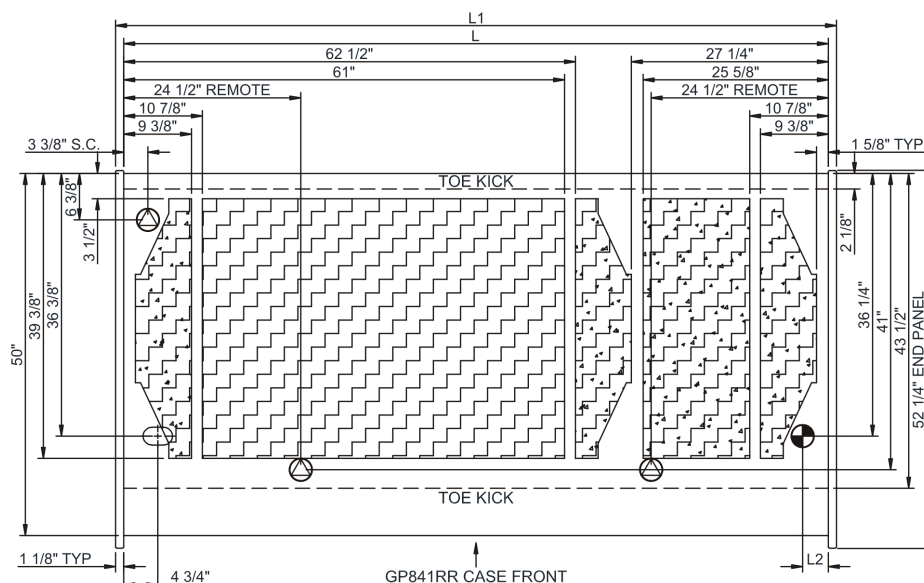
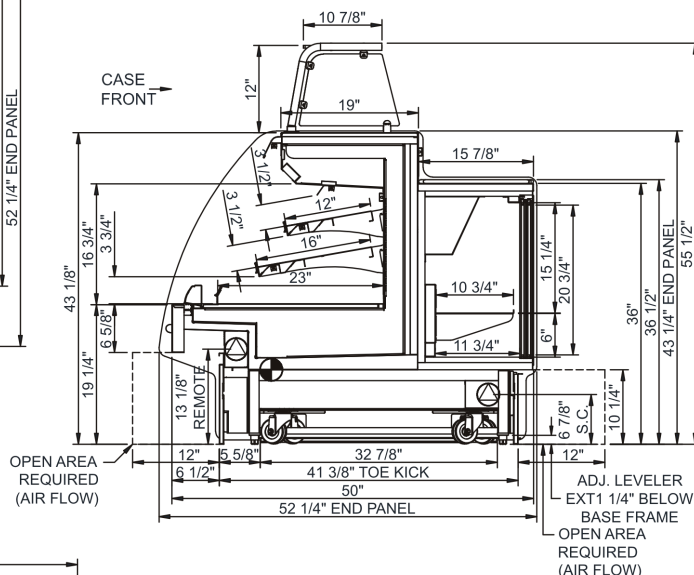
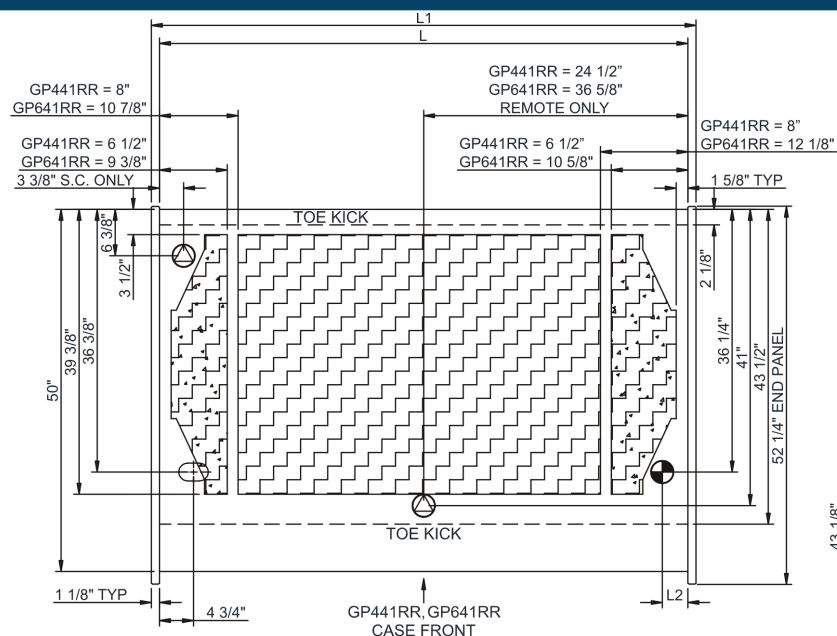


In Accordance with
AHRI Std 1200

Fusion - GP Combination Prep Case

Structural Concepts®

DELIVERING FRESH. ALWAYS.™



NOTE: ALL DIMENSIONS APPROXIMATE

- | | | | | | |
|---|--|---|---|--|---|
|  | ELECTRICAL JUNCTION BOX
(SUPPLIED WITH 6" LEADS OR POWER CORD). |  | REFRIGERATION LINE CONNECTION. |  | SELF-CONTAINED CASE SERVICE ACCESS AREA. |
|  | LOCATION OF DRAIN TUBE FOR REMOTE REF.
ONLY (SUPPLIED WITH 3/4" OR 1 1/2" PVC TUBE). |  | REMOTE FLOOR SINK & UTILITIES ACCESS AREA. |  | DRY CASE SERVICE ACCESS AREA. |