

# Technical Information

Fusion - GHSSCD 37"H Refrigerated Combination Case

**DISCONTINUED**

**Structural Concepts®**

DELIVERING FRESH. ALWAYS.™

## DIMENSIONS / SHIPPING

Model	L"	L1"	L2"	Est Wt (lbs)
GHSSCD436RLB	48.750	51.000	3.500	N/A
GHSSCD536RLB	60.625	62.875	3.500	N/A
GHSSCD636RLB	73.125	75.375	3.500	N/A
GHSSCD836RLB	97.500	99.750	3.500	N/A
GHSSCD1236RLB	146.250	148.500	45.125	N/A

## ELECTRICAL

Model	System Circuit Volts			Ph	Frq	Rated Load Amps	Min Cir Amps	Max OCP Amps	Watts	Wires	NEMA Plug	Amps Lights	Amps Fans	Amps Anti-Sweats	Amps Misc/Refrig/Heat
GHSSCD436RLB	Remote (DX)	Circuit #1	110-120	1	60	1.19	15	15	62	2+G	Leads Multiple	0.70	0.31	0.18	N/A
GHSSCD536RLB	Remote (DX)	Circuit #1	110-120	1	60	1.55	15	15	93	2+G	Leads Multiple	0.70	0.62	0.23	N/A
GHSSCD636RLB	Remote (DX)	Circuit #1	110-120	1	60	1.61	15	15	105	2+G	Leads Multiple	0.70	0.62	0.29	N/A
GHSSCD836RLB	Remote (DX)-Type I Env	Circuit #1	110-120	1	60	1.68	15	15	123	2+G	Leads Multiple	0.70	0.62	0.36	N/A
GHSSCD1236RLB	Remote (DX)-Type I Env	Circuit #1	110-120	1	60	2.18	15	15	186	2+G	Leads Multiple	0.70	0.93	0.55	N/A

## REFRIGERATION

Model	Zone	Section	System	Env't	REMOTE REFRIGERATION					GLYCOL / R744 REFRIGERATION			
					SST (°F)	Conv. Rack BTUH	Para. Rack BTUH	Defrost Interval (Hrs)	Defrost Duration	Total GPM	Pressure Drop (psi)	Concent (%)	Liquid Temp (°F)
GHSSCD436RLB	All	Main	Remote-DX	Type I	20	3,110	2,880	4.00	25.00	N/A	N/A	N/A	N/A
GHSSCD536RLB	All	Main	Remote-DX	Type I	20	3,499	3,240	4.00	25.00	N/A	N/A	N/A	N/A
GHSSCD636RLB	All	Main	Remote-DX	Type I	20	3,888	3,600	4.00	25.00	N/A	N/A	N/A	N/A
GHSSCD836RLB	All	Main	Remote-DX-Type I Env	Type I	20	5,832	5,400	4.00	30.00	N/A	N/A	N/A	N/A
GHSSCD1236RLB	All	Main	Remote-DX-Type I Env	Type I	24	7,906	7,320	4.00	30.00	N/A	N/A	N/A	N/A

## INTENDED ENVIRONMENT

Type I - Designed to operate in ambient conditions of 75°F with 55% relative humidity unless noted otherwise under Env't above.

## WARMEST AVERAGE PRODUCT TEMP & INTENDED USE OF ZONES

Zone	Temp (°F)	Intended Use
1	40	Packaged refrigerated products

## REGULATORY

All Models	Accordance with AHRI Std 1200 ETL Listed to UL 471 ETL Listed to CAN/CSA 22.2 No. 120 ETL Sanitation to NSF/ANSI 7
------------	---

## IMPORTANT NOTES

- 1) ELECTRICAL NOTE: If GFCI is required, a GFCI breaker MUST be used in lieu of a GFCI receptacle.
- 2) 62" minimum door entry clearance required (without shipping skid).
- 3) Units must be shimmed during installation to ensure the unit is level and plumb.



In Accordance with  
**AHRI Std 1200**

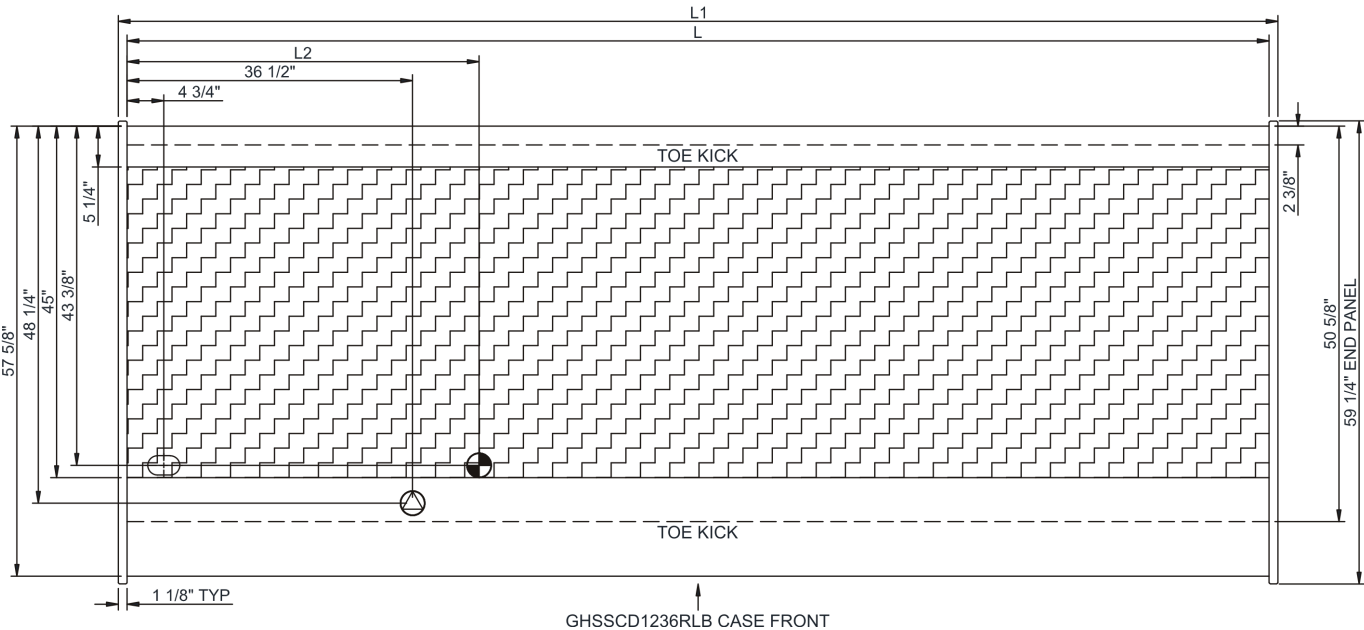
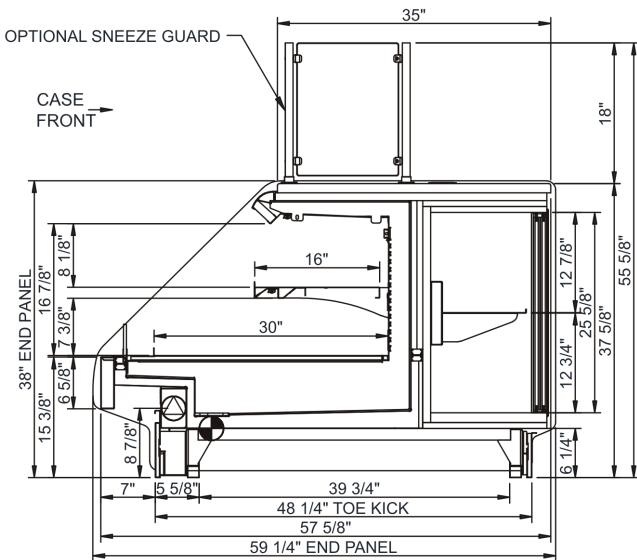
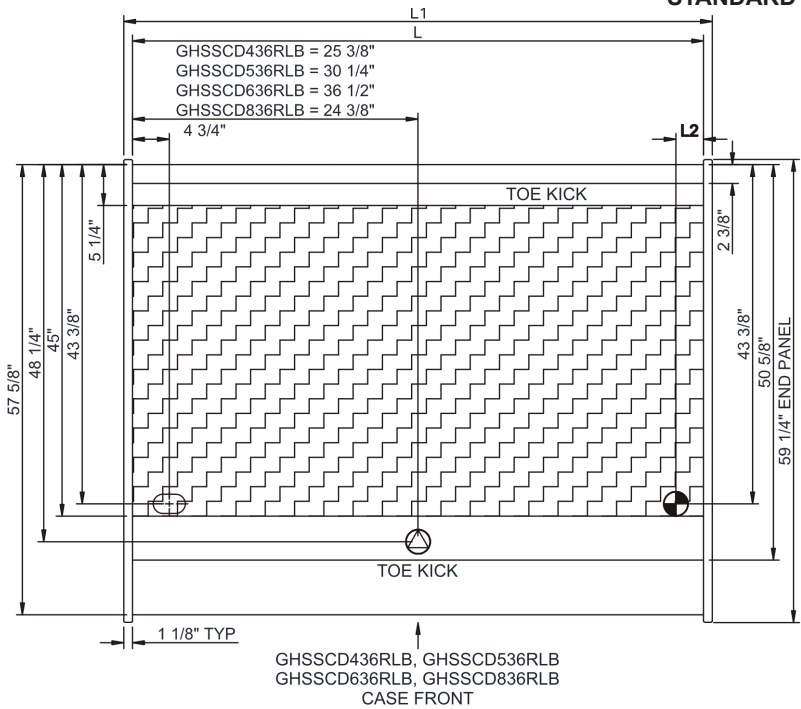
# Technical Information

Fusion - GHSSCD 37"H Refrigerated Combination Case

Structural Concepts®

DELIVERING FRESH. ALWAYS.™

## STANDARD



NOTE: ALL DIMENSIONS APPROXIMATE

- ELECTRICAL JUNCTION BOX (SUPPLIED WITH 6" LEADS OR POWER CORD).
- LOCATION OF DRAIN TUBE FOR REMOTE REF. ONLY (SUPPLIED WITH 3/4" OR 1 1/2" PVC TUBE).

- REFRIGERATION LINE CONNECTION.
- REMOTE FLOOR SINK & UTILITIES ACCESS AREA.

- SELF-CONTAINED CASE SERVICE ACCESS AREA.
- DRY CASE SERVICE ACCESS AREA.