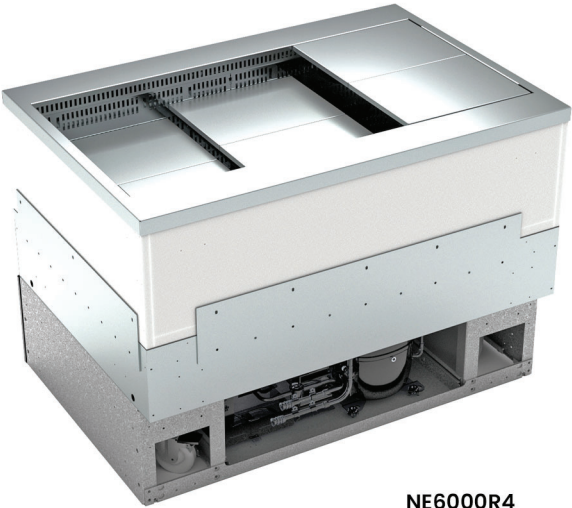


- NE4800R3 46-1/4"L x 31-7/8"D x 32-1/2"H
- NE6000R4 58-1/4"L x 31-7/8"D x 32-1/2"H
- NE7200R5 70-1/4"L x 31-7/8"D x 32-1/2"H

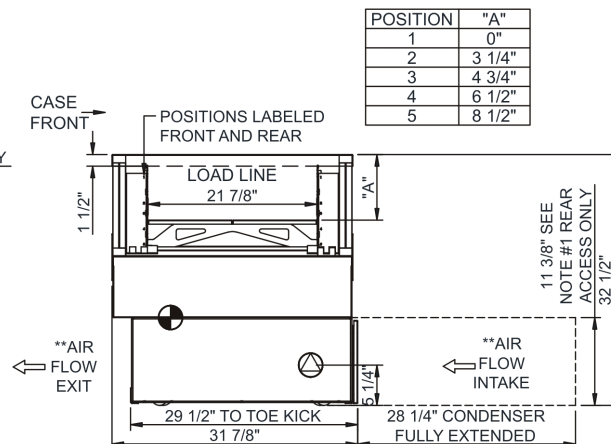


NE6000R4

- Included**
- Breeze~E (Type-II) self-contained refrigeration
 - Adjustable decks
 - Compressor air intake from rear and out front panel at toe kick. Front panel cannot be blocked.
 - Integrated average product temperature of 40°F or less
 - NOTE: Pans not supplied with case.
 - One year parts & labor; 5 year compressor warranty
 - Stainless steel interior

Specify	Standard Features	Additional Options
REAR EXTERIOR COLOR	<ul style="list-style-type: none">• None	<ul style="list-style-type: none">• Powder coated (stock/non-stock colors)• Powder coated Silversan Black• Stainless steel
BASE SUPPORT	<ul style="list-style-type: none">• Adjustable, locking casters	<ul style="list-style-type: none">• Shims (remote)
LOWER REAR PANEL	<ul style="list-style-type: none">• Powder coated Silversan Black	<ul style="list-style-type: none">• Powder coated (stock colors, specify RAL#)• Stainless steel
ELECTRICAL CONNECTION	<ul style="list-style-type: none">• 10' Straight blade power cord (self-cont.)	<ul style="list-style-type: none">• 10' Locking power cord (self-cont.)• Electrical leads (remote)
REFRIGERATION	<ul style="list-style-type: none">• Breeze~E (Type-II) self-contained refrigeration (rear access)	<ul style="list-style-type: none">• Note: Remote doesn't incl Conds unit. Floor drain reqd.• Remote w/thermostat, solenoid & TXV
MISCELLANEOUS		<ul style="list-style-type: none">• Second year parts & labor warranty (excludes compressor)
ACCESSORIES		<ul style="list-style-type: none">• Clean Sweep® coil cleaner (self-cont.)

SIDE VIEW



NOTES:
1. 11 3/8" TALL, FULL WIDTH OF CASE OPENING IN CABINET OR COUNTER IS REQUIRED TO PULL OUT REFRIGERATION SYSTEM.
2. SEE "COUNTER INSTALLATION GUIDE" FOR AIR FLOW REQUIREMENTS.

NOTE: ALL DIMENSIONS APPROXIMATE

- | | | | | | |
|---|--|---|---|---|--|
| | ELECTRICAL JUNCTION BOX
(SUPPLIED WITH 6" LEADS OR POWER CORD). | | REFRIGERATION LINE CONNECTION. | | SELF-CONTAINED CASE SERVICE ACCESS AREA. |
|  | LOCATION OF DRAIN TUBE FROM REMOTE REF.
ONLY (SUPPLIED WITH 3/4" OR 1" PVC TUBE). |  | REMOTE FLOOR SINK & UTILITIES
ACCESS AREA. |  | DRY CASE SERVICE ACCESS AREA. |

Model Technical Specifications																
Model	L"	L1"	L2"	System Circuit Volts			Phs	Freq	Amps ***	Watts	Wires	NEMA Plug	SST	Conv. Rack RTU#	Para. Rack RTU#	Est Wt
NE4800R3	N/A	46.25	3.38	Remote (DX)	Circuit #1	110-120	1	60	0.96	92	2+G	Leads Single	20.00	1296	1200	900
				Self-Contained (R513A)	Circuit #1	110-120	1	60	9.46	825	2+G	5-15P or L5-15P	N/A	N/A	N/A	
NE6000R4	N/A	58.25	3.38	Remote (DX)	Circuit #1	110-120	1	60	0.92	86	2+G	Leads Single	20.00	1598	1480	1,000
				Self-Contained (R513A)	Circuit #1	110-120	1	60	13.60	1,059	2+G	5-20P or L5-20P	N/A	N/A	N/A	
NE7200R5	N/A	70.25	3.38	Remote (DX)	Circuit #1	110-120	1	60	0.96	92	2+G	Leads Single	20.00	1901	1760	1,150
				Self-Contained (R513A)	Circuit #1	110-120	1	60	13.64	1,065	2+G	5-20P or L5-20P	N/A	N/A	N/A	

*** Does not include electric defrost on freezer models.

Regulatory Approvals:	
All Models	<p>Accordance with AHRI Std 1200</p> <p>ETL Listed to UL 471</p> <p>ETL Listed to CAN/CSA 22.2 No. 120</p> <p>ETL Sanitation to NSF/ANSI 7</p>



In Accordance with
AHRI Std 1200

DOE 2017
Energy Efficiency
Compliant

Important Notes:

- 1) ELECTRICAL NOTE: If GFCI is required, a GFCI breaker **MUST** be used in lieu of a GFCI receptacle.
- 2) Back side of counter must be open or vented the full length of the unit to allow proper ventilation for the refrigeration system.
- 3) A vent in the front of the counter recommended to help dissipate compressor heat.
- 4) Rear Access Standard - Counter must be configured to allow air to be drawn in the rear and discharged out the front.
- 5) Front Access Option - Counter must be configured to allow air to be drawn in the front and discharged out the rear.
- 6) Unit can intake and discharge from rear with optional rear vented panel.

⚠ WARNING: This product can expose you to chemicals, including Urethane (Ethyl Carbamate), which are known to the State of California to cause cancer and birth defects or other reproductive harm. For more information go to www.P65Warnings.ca.gov.