

Technical Information

Reveal® - Refrigerated Service Case

DISCONTINUED

Structural Concepts®

DELIVERING FRESH. ALWAYS.™

DIMENSIONS / SHIPPING

| Model | L" | L1" | L2" | Est Wt (lbs) |
|-----------|-----|--------|-------|--------------|
| NR6033RSV | N/A | 59.750 | 4.125 | N/A |
| NR7233RSV | N/A | 71.750 | 4.125 | N/A |

ELECTRICAL

| Model | System | Circuit Volts | Ph | Frq | Rated Load Amps | Min Cir Amps | Max OCP Amps | Watts | Wires | NEMA Plug | Amps Lights | Amps Fans | Amps Anti-Sweats | Amps Misc/Refrig/Heat |
|-----------|------------------------|---------------|---------|-----|-----------------|--------------|--------------|-------|-------|-----------|-----------------|-----------|------------------|-----------------------|
| NR6033RSV | Remote (DX) | Circuit #1 | 110-120 | 1 | 60 | 1.38 | 15 | 15 | 45 | 2+G | Leads Single | 0.70 | 0.60 | 0.08 |
| | Remote (DX) | Circuit #1 | 110-120 | 1 | 60 | 1.38 | 15 | 15 | 45 | 2+G | Leads Single | 0.70 | 0.60 | 0.08 |
| | Self-Contained (R513A) | Circuit #1 | 110-120 | 1 | 60 | 10.06 | 15 | 15 | 775 | 2+G | 5-15P or L5-15P | 0.70 | 1.20 | 3.96 |
| NR7233RSV | Remote (DX) | Circuit #1 | 110-120 | 1 | 60 | 1.38 | 15 | 15 | 47 | 2+G | Leads Single | 0.70 | 0.60 | 0.08 |
| | Remote (DX) | Circuit #1 | 110-120 | 1 | 60 | 1.38 | 15 | 15 | 47 | 2+G | Leads Single | 0.70 | 0.60 | 0.08 |
| | Self-Contained (R513A) | Circuit #1 | 110-120 | 1 | 60 | 10.06 | 15 | 15 | 777 | 2+G | 5-15P or L5-15P | 0.70 | 1.20 | 3.96 |

REFRIGERATION

| Model | Zone | Section | System | Env't | REMOTE REFRIGERATION | | | | | GLYCOL / R744 REFRIGERATION | | | |
|-----------|------|--------------|----------------------|---------|----------------------|-----------------|-----------------|------------------------|------------------|-----------------------------|---------------------|-------------|------------------|
| | | | | | SST (°F) | Conv. Rack BTUH | Para. Rack BTUH | Defrost Interval (Hrs) | Defrost Duration | Total GPM | Pressure Drop (psi) | Concent (%) | Liquid Temp (°F) |
| NR6033RSV | All | Refrigerator | Remote-DX | Type II | 20 | 1,145 | 1,060 | 4.00 | 25.00 | N/A | N/A | N/A | N/A |
| | All | Main | Self-Contained-R513A | Type II | N/A | N/A | N/A | N/A | N/A | N/A | N/A | N/A | N/A |
| | All | Refrigerator | Remote-DX | Type I | 20 | 1,015 | 940 | 4.00 | 25.00 | N/A | N/A | N/A | N/A |
| NR7233RSV | All | Refrigerator | Remote-DX | Type II | 20 | 1,361 | 1,260 | 4.00 | 30.00 | N/A | N/A | N/A | N/A |
| | All | Main | Self-Contained-R513A | Type II | N/A | N/A | N/A | N/A | N/A | N/A | N/A | N/A | N/A |
| | All | Refrigerator | Remote-DX | Type I | 20 | 1,210 | 1,120 | 4.00 | 30.00 | N/A | N/A | N/A | N/A |

INTENDED ENVIRONMENT

Type II - Designed to operate in ambient conditions of 80°F and 55% relative humidity unless noted otherwise under Env't above.

WARMEST AVERAGE PRODUCT TEMP & INTENDED USE OF ZONES

| Zone | Temp (°F) | Intended Use |
|------|-----------|----------------------------------|
| 1 | 40 | Unpackaged refrigerated products |

REGULATORY

| | |
|------------|---|
| All Models | Accordance with AHRI Std 1200 ETL Listed to UL 471 ETL Listed to CAN/CSA 22.2 No. 120 ETL Sanitation to NSF/ANSI 7 |
|------------|---|

IMPORTANT NOTES

- 1) ELECTRICAL NOTE: If GFCI is required, a GFCI breaker MUST be used in lieu of a GFCI receptacle
- 2) Back side of counter must be open or vented the full length of the unit to allow proper ventilation for the refrigeration system.
- 3) Glass warranty only applicable to first point of delivery.



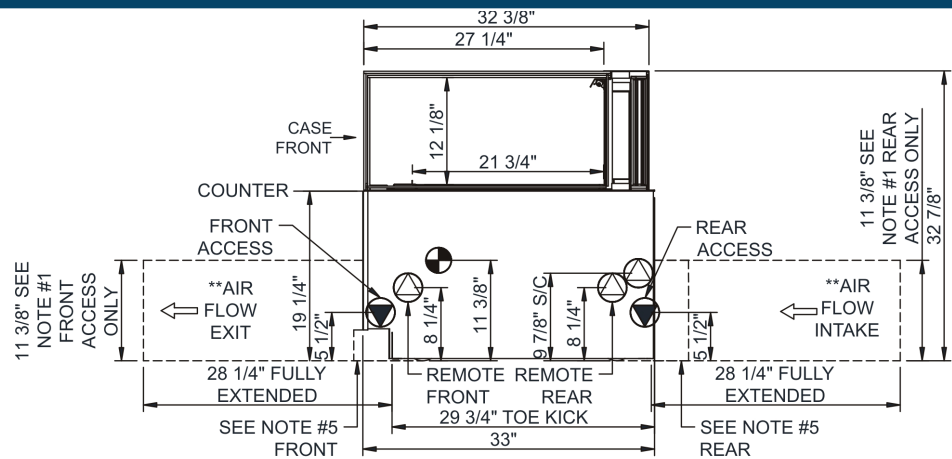
In Accordance with
AHRI Std 1200

Technical Information

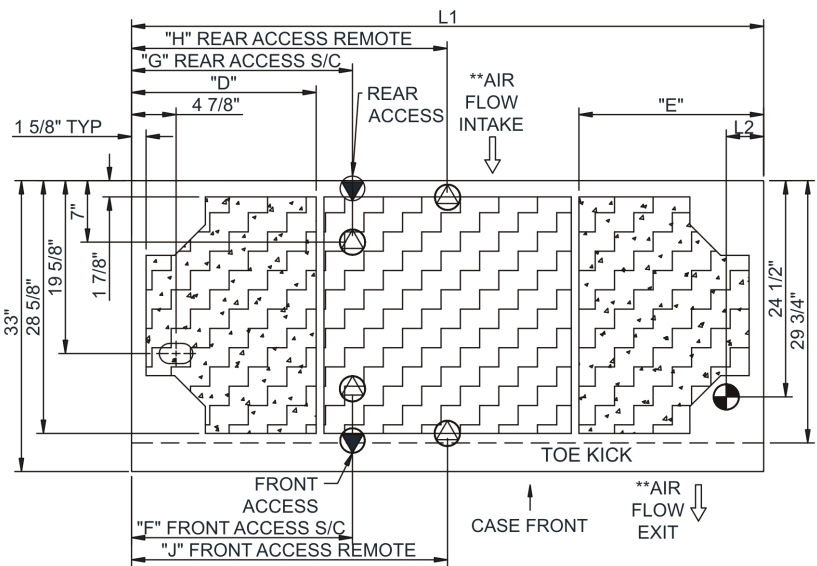
Reveal® - Refrigerated Service Case

Structural Concepts®

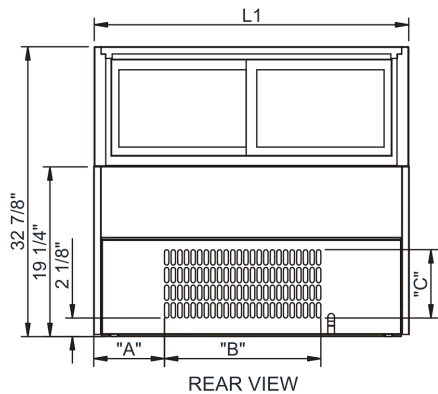
DELIVERING FRESH. ALWAYS.™



- NOTES:
1. 11 3/8" TALL, FULL WIDTH OF CASE OPENING IN CABINET OR COUNTER IS REQUIRED TO PULL OUT REFRIGERATION SYSTEM.
 2. BACK OF COUNTER / CABINET MUST BE VENTED PROPERLY FOR ADEQUATE AIRFLOW TO CONDENSER.
 3. **REPRESENTS REAR PULLOUT REFRIGERATION. AIR FLOW INTAKE AND EXIT DETAILS ARE REVERSED WITH FRONT PULLOUT REFRIGERATION OPTION.
 4. SELF-CONTAINED ACCESS ONLY BY PULLING OUT CONDENSER UNIT.
 5. 4" OPEN AREA CLEARANCE REQUIRED FOR AIR FLOW FRONT AND REAR OF CASE.



| | "D" | "E" | "F" | "G" | "H" | "J" |
|-----------|-----|-----|---------|---------|---------|---------|
| NR3633RSV | N/A | N/A | 7" | 7" | 17 7/8" | 17 7/8" |
| NR4833RSV | 9" | 9" | 12 3/4" | 12 3/4" | 23 7/8" | 23 7/8" |
| NR6033RSV | 9" | 21" | 12 3/4" | 24 3/4" | 29 7/8" | 29 7/8" |
| NR7233RSV | 21" | 21" | 25 1/8" | 25 1/8" | 35 7/8" | 35 7/8" |



| | "A" | "B" | "C" |
|-----------|-----|---------|--------|
| NR3633RSV | 8" | 17 3/4" | 7 3/4" |
| NR4833RSV | 14" | 17 3/4" | 7 3/4" |
| NR6033RSV | 26" | 17 3/4" | 7 3/4" |
| NR7233RSV | 26" | 17 3/4" | 7 3/4" |

NOTE: ALL DIMENSIONS APPROXIMATE

ELECTRICAL JUNCTION BOX (SUPPLIED WITH 6" LEADS OR POWER CORD).
 LOCATION OF DRAIN TUBE FOR REMOTE REF. ONLY (SUPPLIED WITH 3/4" OR 1 1/2" PVC TUBE).

REFRIGERATION LINE CONNECTION.
 REMOTE FLOOR SINK & UTILITIES ACCESS AREA.

SELF-CONTAINED CASE SERVICE ACCESS AREA.
 DRY CASE SERVICE ACCESS AREA.