

Technical Information

Reveal® - Refrigerated Self-Service Mobile Case

DISCONTINUED

Structural Concepts®

DELIVERING FRESH. ALWAYS.™

DIMENSIONS / SHIPPING

Model	L"	L1"	L2"	Est Wt (lbs)
NR3647RSSA.MOB	N/A	41.250	0.000	650
NR4847RSSA.MOB	N/A	53.250	4.125	950
NR6047RSSA.MOB	N/A	65.250	4.125	1,000
NR7247RSSA.MOB	N/A	77.250	4.125	1,150

ELECTRICAL

Model	System Circuit Volts			Ph	Frq	Rated Load Amps	Min Cir Amps	Max OCP Amps	Watts	Wires	NEMA Plug	Amps Lights	Amps Fans	Amps Anti-Sweats	Amps Misc/Refrig/Heat
NR3647RSSA.MOB	Self-Contained (R513A)	Circuit #1	110-120	1	60	16.00	20	20	1,183	2+G	5-20P or L5-20P	0.70	0.90	4.08	11.00
NR4847RSSA.MOB	Self-Contained (R513A)	Circuit #1	110-120	1	60	16.00	20	20	1,209	2+G	5-20P or L5-20P	0.70	1.20	4.14	11.00
NR6047RSSA.MOB	Self-Contained (R513A)	Circuit #1	110-120	1	60	16.00	20	20	1,218	2+G	5-20P or L5-20P	0.70	1.20	4.18	10.00
NR7247RSSA.MOB	Self-Contained (R513A)	Circuit #1	208-240	1	60	9.91	15	15	1,374	2+G	6-15P or L6-15P	0.36	0.75	2.30	6.50

REFRIGERATION

Model	Zone	Section	System	Env't	REMOTE REFRIGERATION					GLYCOL / R744 REFRIGERATION			
					SST (°F)	Conv. Rack BTUH	Para. Rack BTUH	Defrost Interval (Hrs)	Defrost Duration	Total GPM	Pressure Drop (psi)	Concent (%)	Liquid Temp (°F)
NR3647RSSA.MOB	All	Main	Self-Contained-R513A	Type II	N/A	N/A	N/A	N/A	N/A	N/A	N/A	N/A	N/A
NR4847RSSA.MOB	All	Main	Self-Contained-R513A	Type II	N/A	N/A	N/A	N/A	N/A	N/A	N/A	N/A	N/A
NR6047RSSA.MOB	All	Main	Self-Contained-R513A	Type II	N/A	N/A	N/A	N/A	N/A	N/A	N/A	N/A	N/A
NR7247RSSA.MOB	All	Main	Self-Contained-R513A	Type II	N/A	N/A	N/A	N/A	N/A	N/A	N/A	N/A	N/A

INTENDED ENVIRONMENT

Type II - Designed to operate in ambient conditions of 80°F and 60% relative humidity unless noted otherwise under Env't above.

WARMEST AVERAGE PRODUCT TEMP & INTENDED USE OF ZONES

Zone	Temp (°F)	Intended Use
1	40	Packaged refrigerated products

IMPORTANT NOTES

- 1) ELECTRICAL NOTE: If GFCI is required, a GFCI breaker MUST be used in lieu of a GFCI receptacle
- 2) Glass warranty only applicable to first point of delivery.
- 3) Compressor air intake from rear and out front panel at toe kick. Front panel cannot be blocked.

REGULATORY

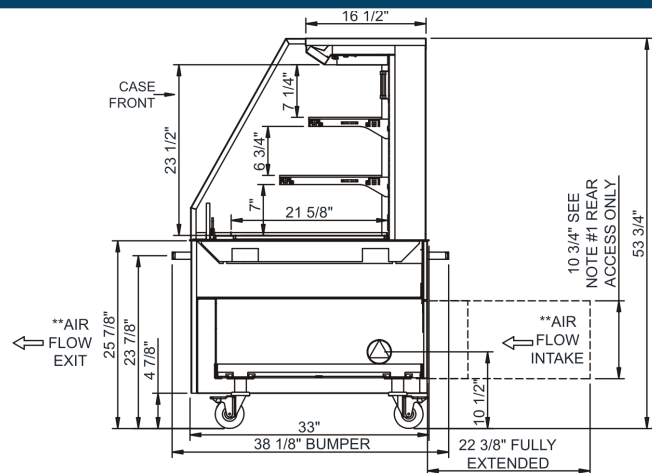
All Models
 Accordance with AHRI Std 1200
 ETL Listed to UL 471
 ETL Listed to CAN/CSA 22.2 No. 120
 ETL Sanitation to NSF/ANSI 7



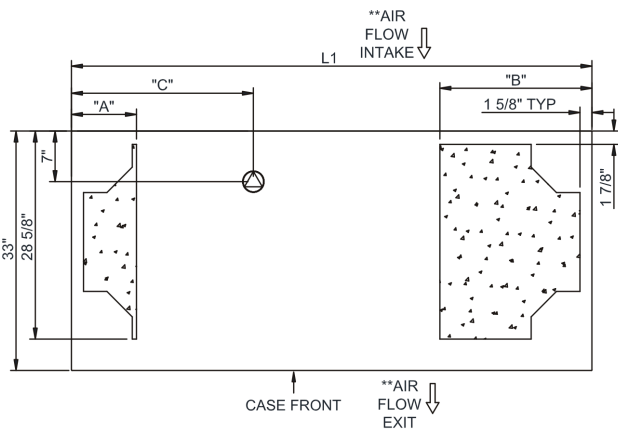
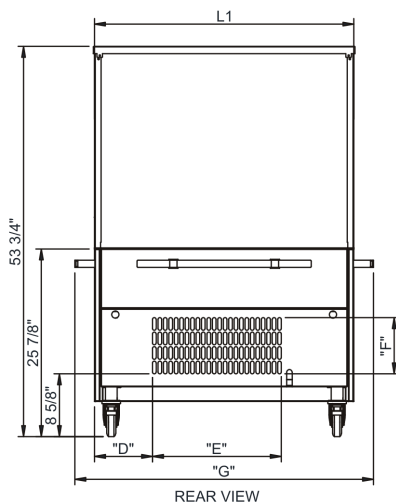
In Accordance with
AHRI Std 1200

Technical Information

Reveal® - Refrigerated Self-Service Mobile Case



	"D"	"E"	"F"	"G"
NR3647RSSA.MOB	8"	17 3/4"	7 3/4"	41 1/4"
NR4847RSSA.MOB	7"	30 1/2"	7 3/4"	53 1/4"
NR6047RSSA.MOB	13"	30 1/2"	7 3/4"	65 1/4"
NR7247RSSA.MOB	25"	30 1/2"	7 3/4"	77 1/4"



	"A"	"B"	"C"
NR3647RSSA.MOB	*N/A	*N/A	7"
NR4847RSSA.MOB	*N/A	*N/A	12 3/4"
NR6047RSSA.MOB	9"	9"	24 3/4"
NR7247RSSA.MOB	9"	21"	25 1/8"

NOTE:
*SELF-CONTAINED ACCESS ONLY BY PULLING OUT CONDENSER UNIT.

NOTE: ALL DIMENSIONS APPROXIMATE

⊗ ELECTRICAL JUNCTION BOX
(SUPPLIED WITH 6" LEADS OR POWER CORD).
⊙ LOCATION OF DRAIN TUBE FOR REMOTE REF.
ONLY (SUPPLIED WITH 3/4" OR 1 1/2" PVC TUBE).

⊕ REFRIGERATION LINE CONNECTION.
⊞ REMOTE FLOOR SINK & UTILITIES
ACCESS AREA.

⊞ SELF-CONTAINED CASE SERVICE ACCESS AREA.
⊞ DRY CASE SERVICE ACCESS AREA.