

# Technical Information

Fusion - MD 85"H Self-Service Refrigerated Doored Case Self-Contained

Structural Concepts®

DELIVERING FRESH. ALWAYS.™

## DIMENSIONS / SHIPPING

Model	L"	L1"	L2"	Est Wt (lbs)
MD485DR	48.000	50.250	0.000	N/A
MD685DR	72.000	74.250	0.000	N/A

## ELECTRICAL

Model	System	Circuit Volts	Circuit #1	Ph	Frq	Rated Load Amps	Min Cir Amps	Max OCP Amps	Watts	Wires	NEMA Plug	Amps Lights	Amps Fans	Amps Anti-Sweats	Amps Misc/Refrig/Heat
MD485DR	Self-Contained (R290)-Type I Env		110-120	1	60	10.73	15	15	1,014	2+G	5-15P or L5-15P	N/A	0.45	3.96	6.32
MD685DR	Self-Contained (R290)-Type I Env		110-120	1	60	11.18	15	15	1,070	2+G	5-15P or L5-15P	N/A	0.90	3.96	6.32

## REFRIGERATION

Model	Zone	Section	System	Env	REMOTE REFRIGERATION					GLYCOL / R744 REFRIGERATION			
					SST (°F)	Conv. Rack BTUH	Para. Rack BTUH	Defrost Interval (Hrs)	Defrost Duration	Total GPM	Pressure Drop (psi)	Concent (%)	Liquid Temp (°F)
MD485DR	All	Main	Self-Contained-R290-Type I Env	Type I	N/A	N/A	N/A	N/A	N/A	N/A	N/A	N/A	N/A
MD685DR	All	Main	Self-Contained-R290-Type I Env	Type I	N/A	N/A	N/A	N/A	N/A	N/A	N/A	N/A	N/A

## INTENDED ENVIRONMENT

Type I - Designed to operate in ambient conditions of 75°F with 55% relative humidity unless noted otherwise under Env above.

## IMPORTANT NOTES

1) Units must be shimmed during installation to ensure the unit is level and plumb.

## WARMEST AVERAGE PRODUCT TEMP & INTENDED USE OF ZONES

Zone	Temp (°F)	Intended Use
1	40	Packaged / unpackaged refrigerated products

## REGULATORY

All Models	Accordance with AHRI Std 1200 ETL Listed to UL 471 ETL Listed to CAN/CSA 22.2 No. 120 ETL Sanitation to NSF/ANSI 7
------------	---



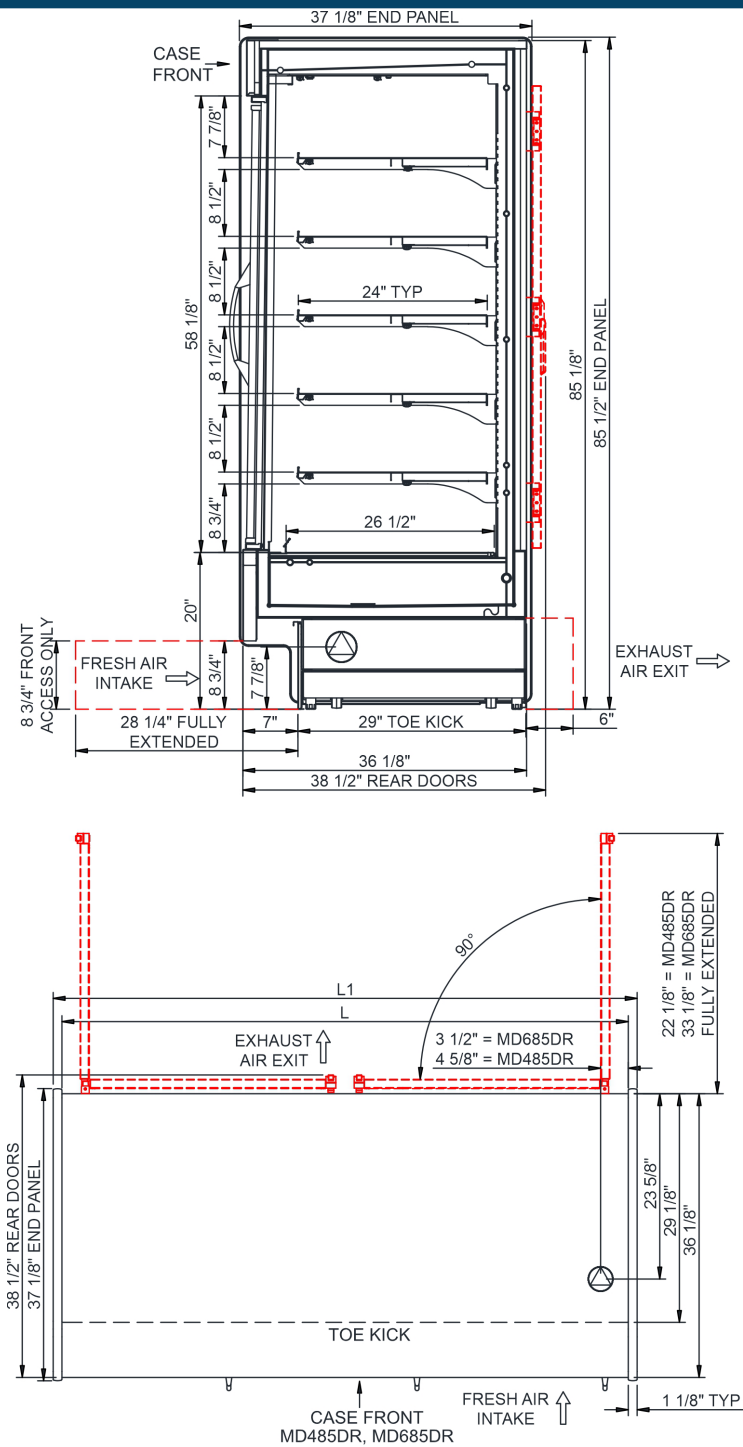
In Accordance with  
AHRI Std 1200

# Technical Information

Fusion - MD 85"H Self-Service Refrigerated Doored Case Self-Contained

Structural Concepts®

DELIVERING FRESH. ALWAYS.™



NOTE:  
1. SELF-CONTAINED REFRIGERATION ACCESS ONLY BY PULLING OUT CONDENSER DRAWER.

NOTE: ALL DIMENSIONS APPROXIMATE

- |   |  |   |
|---|--|---|
|  ELECTRICAL JUNCTION BOX (SUPPLIED WITH 6" LEADS OR POWER CORD). |  REFRIGERATION LINE CONNECTION. |  SELF-CONTAINED CASE SERVICE ACCESS AREA. |
|  REMOTE FLOOR SINK & UTILITIES ACCESS AREA.                      |  DRY CASE SERVICE ACCESS AREA.  |   |