

# Fusion

GMDS Refrigerated Mid-Capacity Service Case

**Structural Concepts®**

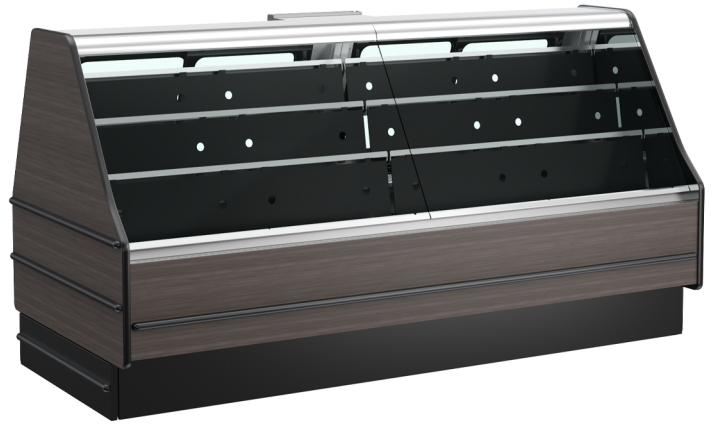
DELIVERING FRESH. ALWAYS.™

• GMDS8R.8110

99-3/4"L x 42-5/8"D x 51-7/8"H

## Included

- LED top & nose lights



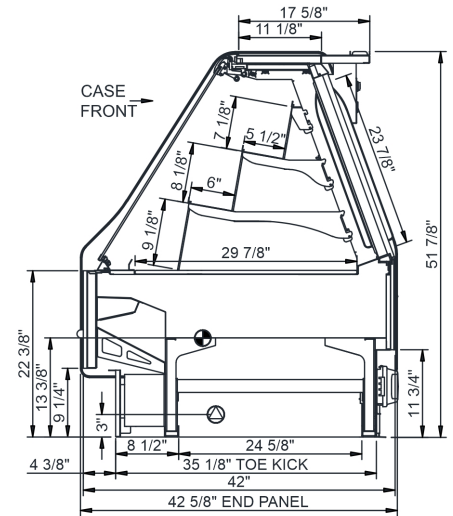
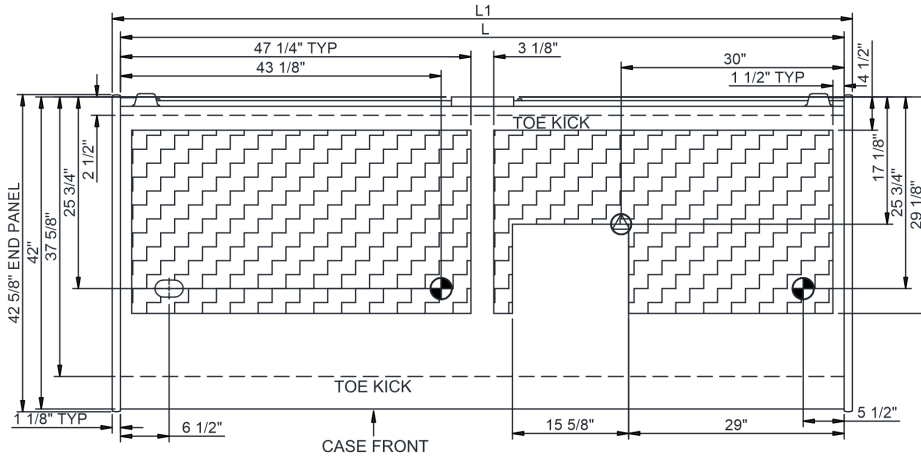
GMDS8R.8110

Specify	Standard Features	Additional Options
EXTERIOR COLOR - LAMINATED	• None	• Laminated (specify color) (confirm pattern/grain direction)
EXTERIOR COLOR - POWDER COATED	• Powder coated (specify color)	• None
EXTRUSION COLOR	• Black	• Silver
INTERIOR COLOR	• Stainless steel	
T-EDGE	• Black	• Silver
BASE	• Rail system for shims	
BUMPER	• None	• 1" bumper (specify color)
END PANELS	• None	• Case to case full end • Full end panel w/mirror interior
FRONT GLASS	• Flat angled single pane, lift-up	
FRONT PANEL	• Powder coated (specify color)	• Laminated (specify color) (confirm pattern/grain direction)
REAR WRAPPING BOARD	• None	• Rear wrapping board
SCALE STAND	• None	• Top mount scale stand w/receptacle
TOP BOARD	• Stainless steel	• Powder coated (specify color)
UPPER REAR DOORS	• Reflective glass rear sliding doors w/o lock	
PRICE TAG MOLDING	• None	• Price tag molding
SHELVING	• Meat log display riser (n/a w/shelf)	
LIGHTING UPPER	• LED top light(s)	
NOSE LIGHTS	• LED nose light	
ELECTRICAL CONNECTION	• Leads	
CONTROLLER	• None	• Carel Heos DX • Danfoss CO2 • Danfoss DX • Dixel CO2 • Dixel DX
REFRIGERATION	• Remote DX refrigeration	• Remote CO2 refrigeration • Remote Glycol refrigeration

<b>Intended Environment:</b> Type I - Designed to operate in ambient conditions of 75°F with 55% relative humidity unless noted otherwise in system information below.		
<b>Zone</b>	<b>Intended Product To Be Displayed</b>	<b>Warmest Avg Prod Temp ° F</b>
1	Unpackaged refrigerated products	40

**PLAN VIEW**

**SIDE VIEW**



**NOTE: ALL DIMENSIONS APPROXIMATE**

- ELECTRICAL JUNCTION BOX**  
(SUPPLIED WITH 6" LEADS OR POWER CORD).
- LOCATION OF DRAIN TUBE FOR REMOTE REF.**  
ONLY (SUPPLIED WITH 3/4" OR 1 1/2" PVC TUBE).

- REFRIGERATION LINE CONNECTION.**
- REMOTE FLOOR SINK & UTILITIES**  
ACCESS AREA.

- SELF-CONTAINED CASE SERVICE ACCESS AREA.**
- DRY CASE SERVICE ACCESS AREA.**

Model Technical Specifications																
Model	L"	L1"	L2"	System Circuit Volts			Phs	Freq	Amps ***	Watts	Wires	NEMA Plug	SST	Conv. Rack BTUH	Para. Rack BTUH	Est Wt
GMDS8R.8110	97.50	99.75	.00	Remote (DX)	Circuit #1	110-120	1	60	2.88	109	2+G	Leads Multiple	26.00	2722	2520	N/A
				Remote (GLYCOL 35%)	Circuit #1	110-120	1	60	2.72	89	2+G	Leads Single	26.00	2722	2520	
				Remote (R744 LIQ OVERFE)	Circuit #1	110-120	1	60	2.88	109	2+G	Leads Single		2722	2520	
				Remote (R744 TRANSCRIT)	Circuit #1	110-120	1	60	2.88	109	2+G	Leads Multiple		2722	2520	

\*\*\* Does not include electric defrost on freezer models.

**Regulatory Approvals:**

All Models  
 Accordance with AHRI Std 1200  
 ETL Listed to UL 471  
 ETL Listed to CAN/CSA 22.2 No. 120  
 ETL Sanitation to NSF/ANSI 7



**Important Notes:**

- 1) Units must be shimmed during installation to ensure the unit is level and plumb.
- ⚠ WARNING:** This product can expose you to chemicals, including Urethane (Ethyl Carbamate), which are known to the State of California to cause cancer and birth defects or other reproductive harm. For more information go to [www.P65Warnings.ca.gov](http://www.P65Warnings.ca.gov).