

Fusion

GLDS 52"H Refrigerated Service Case

Structural Concepts®

DELIVERING FRESH. ALWAYS.™

(Lengths do not include 1-1/8" end panels)

- **GLDS4R** 48-3/4"L x 47-7/8"D x 51-5/8"H
- **GLDS5R** 60-5/8"L x 47-7/8"D x 51-5/8"H
- **GLDS6R** 73-1/8"L x 47-7/8"D x 51-5/8"H
- **GLDS8R** 97-1/2"L x 47-7/8"D x 51-5/8"H

Included

- Integrated average product temperature of 40°F or less
- LED top light
- Lift-up front glass
- One year parts & labor; 5 year compressor warranty
- Stainless steel rear exterior



GLDS6R

Specify	Standard Features	Additional Options
EXTERIOR COLOR	<ul style="list-style-type: none"> Laminate (stock colors) 	<ul style="list-style-type: none"> Laminate (non-stock colors) Powder coated (stock/non-stock colors) Powder coated Silversan Black Stainless steel
INTERIOR COLOR	<ul style="list-style-type: none"> Powder coated Silversan Black 	<ul style="list-style-type: none"> Stainless steel
LOWER FRONT PANEL COLOR	<ul style="list-style-type: none"> Powder coated Silversan Black 	<ul style="list-style-type: none"> Powder coated (stock/non-stock colors) Stainless steel
BASE SUPPORT	<ul style="list-style-type: none"> Casters w/ levelers (self-cont.) 	<ul style="list-style-type: none"> Rail system for shims (remote)
BUMPER FRONT	<ul style="list-style-type: none"> 1" Boston bumper (specify color) 	<ul style="list-style-type: none"> 1" Stainless steel plate rail bumper
DISPLAY	<ul style="list-style-type: none"> None 	<ul style="list-style-type: none"> 2"H Full depth display riser(s)
END PANELS	<ul style="list-style-type: none"> Full w/stainless steel mirror interior 	<ul style="list-style-type: none"> Cutaway w/glass None (specify per line-up)
FRONT GLASS	<ul style="list-style-type: none"> Curved 	<ul style="list-style-type: none"> Flat angled
REAR LEDGE	<ul style="list-style-type: none"> Black Sanalite® 	<ul style="list-style-type: none"> Stainless steel
SCALE STAND	<ul style="list-style-type: none"> None 	<ul style="list-style-type: none"> Scale stand w/ receptacle & CAT5 (specify location) Scale stand w/ receptacle (specify location)
PRICE TAG MOLDING	<ul style="list-style-type: none"> None 	<ul style="list-style-type: none"> 1" Price tag molding (black or silver) Universal price tag molding (clear w/ open top)
LIGHTS	<ul style="list-style-type: none"> LED 3500K w/ frosted lens 	<ul style="list-style-type: none"> LED 4000K w/ frosted lens
ELECTRICAL CONNECTION	<ul style="list-style-type: none"> 6' Straight blade power cord (self-cont.) 	<ul style="list-style-type: none"> 6' Locking power cord (self-cont.) Electrical leads (remote)
REFRIGERATION	<ul style="list-style-type: none"> Breeze self-contained refrigeration 	<ul style="list-style-type: none"> Remote DX refrigeration Remote w/thermostat, solenoid & TXV
SENSOR	<ul style="list-style-type: none"> None 	<ul style="list-style-type: none"> CPC discharge air sensor (remote)
MISCELLANEOUS		<ul style="list-style-type: none"> Front glass lock Rear door lock
ACCESSORIES		<ul style="list-style-type: none"> Clean Sweep® coil cleaner (self-cont.) Drain strainer Stainless steel condiment rail system

Option Notes: 1 - Separate circuit required

Fusion

GLDS 52"H Refrigerated Service Case

Structural Concepts®

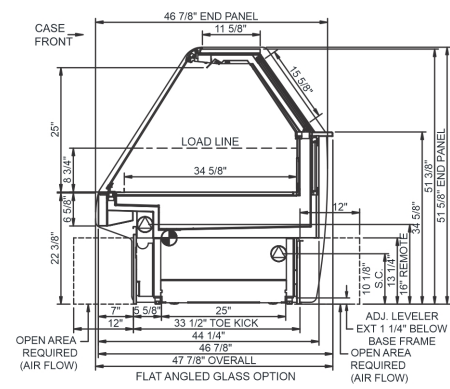
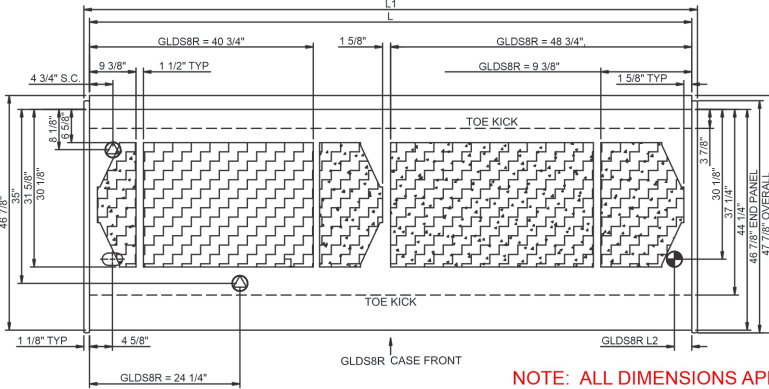
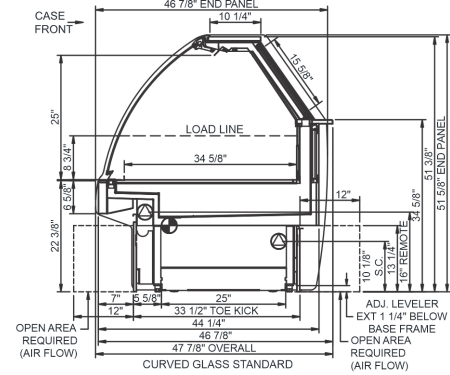
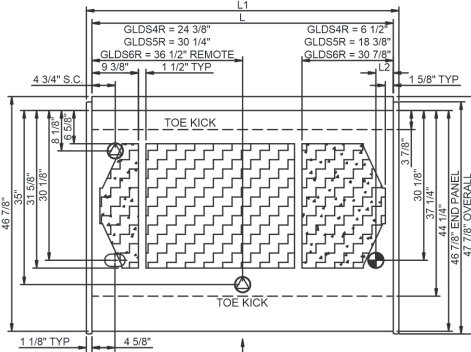
DELIVERING FRESH. ALWAYS.™

Intended Environment: Type I - Designed to operate in ambient conditions of 75°F with 55% relative humidity unless noted otherwise in system information below.

Zone	Intended Product To Be Displayed	Warmest Avg Prod Temp ° F
1	Unpackaged refrigerated products	40

PLAN VIEW

SIDE VIEW



NOTE: ALL DIMENSIONS APPROXIMATE

- ELECTRICAL JUNCTION BOX (SUPPLIED WITH 6\"/>

- REFRIGERATION LINE CONNECTION.
- REMOTE FLOOR SINK & UTILITIES ACCESS AREA.

- SELF-CONTAINED CASE SERVICE ACCESS AREA.
- DRY CASE SERVICE ACCESS AREA.

Model Technical Specifications														
Model	L"	L1"	L2"	System Circuit Volts			Phs	Freq	Amps ***	Watts	Wires	NEMA Plug	SST	Conv. Rack BTU/H
GLDS4R	48.75	51.00	3.50	Remote (DX)	Circuit #1	110-120	1	60	1.53	106	2+G	Leads Multiple	20.00	1179
				Remote (GLYCOL 35%)	Circuit #1	110-120	1	60	1.53	106	2+G	Leads Multiple	20.00	1179
				Self-Contained (R513A)	Circuit #1	110-120	1	60	10.06	758	2+G	5-20P or L5-20P	N/A	N/A
GLDS5R	60.63	62.88	3.50	Remote (DX)	Circuit #1	110-120	1	60	1.99	168	2+G	Leads Multiple	20.00	1568
				Remote (GLYCOL 35%)	Circuit #1	110-120	1	60	1.99	168	2+G	Leads Multiple	-	1566
				Self-Contained (R513A)	Circuit #1	110-120	1	60	14.62	1,008	2+G	5-20P or L5-20P	N/A	N/A
GLDS6R	73.13	75.38	3.50	Remote (DX)	Circuit #1	110-120	1	60	2.29	82	2+G	Leads Multiple	20.00	1771
				Remote (GLYCOL 35%)	Circuit #1	110-120	1	60	2.29	82	2+G	Leads Multiple	-	1771
				Self-Contained (R513A)	Circuit #1	110-120	1	60	14.91	1,045	2+G	5-20P or L5-20P	N/A	N/A
GLDS8R	97.50	99.75	3.50	Remote (DX)	Circuit #1	110-120	1	60	2.29	216	2+G	Leads Multiple	20.00	2268
				Remote (GLYCOL 35%)	Circuit #1	110-120	1	60	2.29	216	2+G	Leads Multiple	20.00	2268
				Self-Contained (R449A)	Circuit #1	110-120	1	60	16.00	1,440	2+G	5-20P or L5-20P	N/A	N/A

*** Does not include electric defrost on freezer models.

Regulatory Approvals:

All Models
 Accordance with AHRI Std 1200
 ETL Listed to UL 471
 ETL Listed to CAN/CSA 22.2 No. 120
 UL Sanitation to NSF Std 7



In Accordance with
AHRI Std 1200

DOE 2017
 Energy Efficiency
 Compliant

Important Notes:

- 1) ELECTRICAL NOTE: If GFCI is required, a GFCI breaker MUST be used in lieu of a GFCI receptacle.
- 2) 50" minimum door entry clearance required (without shipping skid).
- 3) Units must be shimmed during installation to ensure the unit is level and plumb.

⚠ WARNING: This product can expose you to chemicals, including Urethane (Ethyl Carbamate), which are known to the State of California to cause cancer and birth defects or other reproductive harm. For more information go to www.P65Warnings.ca.gov.