

Technical Information

Fusion - GLDS 52"H Refrigerated Service Case

Structural Concepts®

DELIVERING FRESH. ALWAYS.™

DIMENSIONS / SHIPPING

Model	L"	L1"	L2"	Est Wt (lbs)
GLDS4R	48.750	51.000	3.500	1,050
GLDS5R	60.625	62.875	3.500	1,150
GLDS6R	73.125	75.375	3.500	1,250
GLDS8R	97.500	99.750	3.500	1,400

ELECTRICAL

Model	System Circuit Volts			Ph	Frq	Rated Load Amps	Min Cir Amps	Max OCP Amps	Watts	Wires	NEMA Plug	Amps Lights	Amps Fans	Amps Anti-Sweats	Amps Misc/Refrig/Heat
GLDS4R	Remote (DX)	Circuit #1	110-120	1	60	1.53	15	15	106	2+G	Leads Multiple	0.53	0.30	0.70	N/A
	Remote (GLYCOL)	Circuit #1	110-120	1	60	1.53	15	15	106	2+G	Leads Multiple	0.53	0.30	0.70	N/A
	Self-Contained (R513A)	Circuit #1	110-120	1	60	10.06	20	20	758	2+G	5-20P or L5-20P	0.70	1.40	3.96	4.00
GLDS5R	Remote (DX)	Circuit #1	110-120	1	60	1.99	15	15	168	2+G	Leads Multiple	0.69	0.60	0.70	N/A
	Remote (GLYCOL)	Circuit #1	110-120	1	60	1.99	15	15	168	2+G	Leads Multiple	0.69	0.60	0.70	N/A
	Self-Contained (R513A)	Circuit #1	110-120	1	60	14.62	20	20	1,008	2+G	5-20P or L5-20P	0.70	1.86	3.96	8.10
GLDS6R	Remote (DX)	Circuit #1	110-120	1	60	2.29	15	15	82	2+G	Leads Multiple	0.70	0.60	0.99	N/A
	Remote (GLYCOL)	Circuit #1	110-120	1	60	2.29	15	15	82	2+G	Leads Multiple	0.70	0.60	0.99	N/A
	Self-Contained (R513A)	Circuit #1	110-120	1	60	14.91	20	20	1,045	2+G	5-20P or L5-20P	0.70	1.86	4.25	8.10
GLDS8R	Remote (DX)	Circuit #1	110-120	1	60	2.29	15	15	216	2+G	Leads Multiple	0.99	0.60	0.70	N/A
	Remote (GLYCOL)	Circuit #1	110-120	1	60	2.29	15	15	216	2+G	Leads Multiple	0.99	0.60	0.70	N/A
	Self-Contained (R449A)	Circuit #1	110-120	1	60	16.00	20	20	1,440	2+G	5-20P or L5-20P	0.70	2.70	4.33	9.00

REFRIGERATION

Model	Zone	Section	System	Env't	REMOTE REFRIGERATION					GLYCOL / R744 REFRIGERATION			
					SST (°F)	Conv. Rack BTUH	Para. Rack BTUH	Defrost Interval (Hrs)	Defrost Duration	Total GPM	Pressure Drop (psi)	Concent (%)	Liquid Temp (°F)
GLDS4R	All	Main	Remote-DX	Type I	20	1,179	1,092	4.00	30.00	N/A	N/A	N/A	N/A
	All	Main	Remote-Glycol	Type I	N/A	1,179	1,092	4.00	45.00	0.40	0.69	35%	20.00
	All	Main	Self-Contained-R513A	Type I	N/A	N/A	N/A	N/A	N/A	N/A	N/A	N/A	N/A
GLDS5R	All	Main	Remote-DX	Type I	20	1,568	1,452	4.00	30.00	N/A	N/A	N/A	N/A
	All	Main	Remote-Glycol	Type I	N/A	1,568	1,450	4.00	30.00	1.00	2.42	35%	20.00
	All	Main	Self-Contained-R513A	Type I	N/A	N/A	N/A	N/A	N/A	N/A	N/A	N/A	N/A
GLDS6R	All	Main	Remote-DX	Type I	20	1,771	1,640	4.00	30.00	N/A	N/A	N/A	N/A
	All	Main	Remote-Glycol	Type I	N/A	1,771	1,640	4.00	45.00	0.60	1.42	35%	20.00
	All	Main	Self-Contained-R513A	Type I	N/A	N/A	N/A	N/A	N/A	N/A	N/A	N/A	N/A
GLDS8R	All	Main	Remote-DX	Type I	20	2,268	2,100	4.00	30.00	N/A	N/A	N/A	N/A
	All	Main	Remote-Glycol	Type I	N/A	2,268	2,100	4.00	30.00	0.40	0.69	35%	20.00
	All	Main	Self-Contained-R449A	Type I	N/A	N/A	N/A	N/A	N/A	N/A	N/A	N/A	N/A

INTENDED ENVIRONMENT

Type I - Designed to operate in ambient conditions of 75°F with 55% relative humidity unless noted otherwise under Env't above.

WARMEST AVERAGE PRODUCT TEMP & INTENDED USE OF ZONES

Zone	Temp (°F)	Intended Use
1	40	Unpackaged refrigerated products

IMPORTANT NOTES

- 1) ELECTRICAL NOTE: If GFCI is required, a GFCI breaker MUST be used in lieu of a GFCI receptacle.
- 2) 50" minimum door entry clearance required (without shipping skid).
- 3) Units must be shimmed during installation to ensure the unit is level and plumb.

REGULATORY

All Models
 Accordance with AHRI Std 1200
 ETL Listed to UL 471
 ETL Listed to CAN/CSA 22.2 No. 120
 ETL Sanitation to NSF/ANSI 7



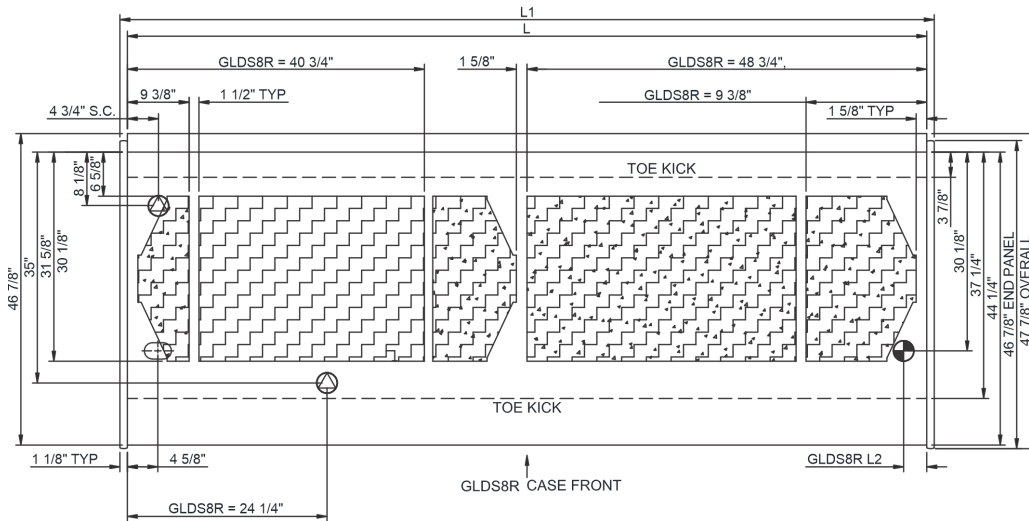
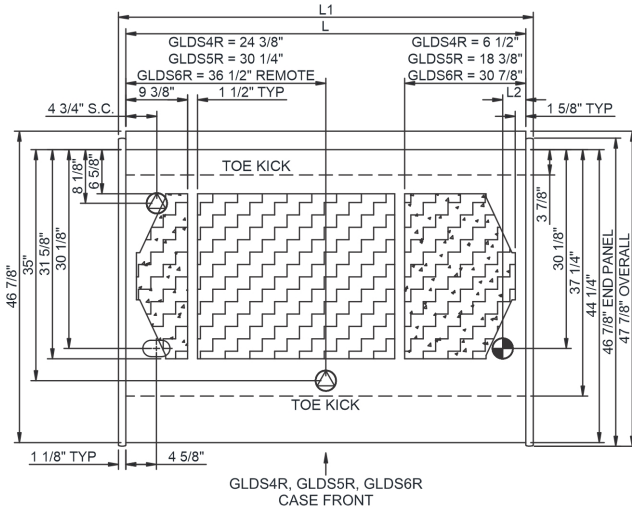
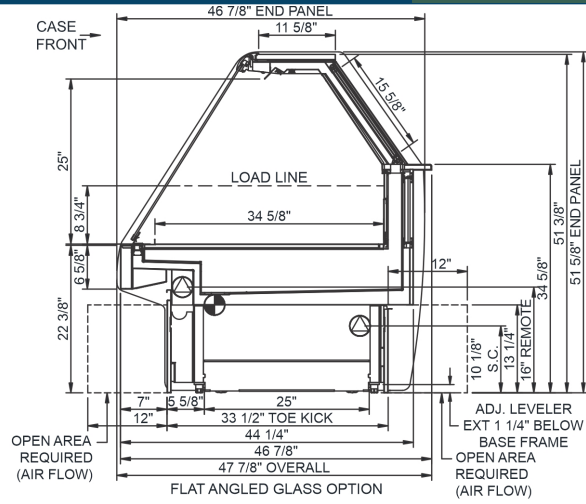
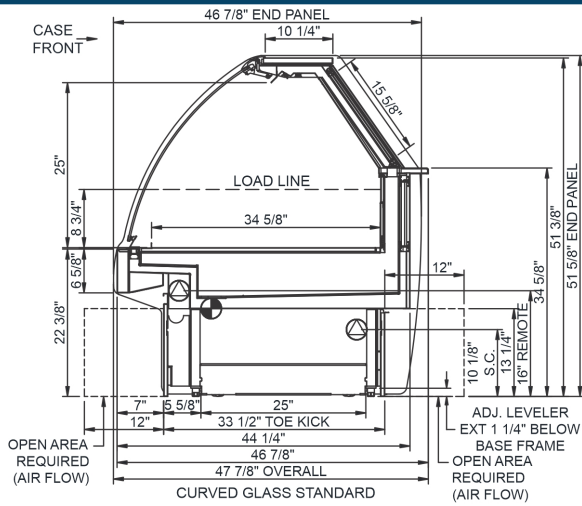
In Accordance with
AHRI Std 1200

Technical Information

Fusion - GLDS 52"H Refrigerated Service Case

Structural Concepts®

DELIVERING FRESH. ALWAYS.™



NOTE: ALL DIMENSIONS APPROXIMATE

- ELECTRICAL JUNCTION BOX
(SUPPLIED WITH 6\"/>
- LOCATION OF DRAIN TUBE FOR REMOTE REF.
ONLY (SUPPLIED WITH 3/4\"/>

- REFRIGERATION LINE CONNECTION.
- REMOTE FLOOR SINK & UTILITIES
ACCESS AREA.

- SELF-CONTAINED CASE SERVICE ACCESS AREA.
- DRY CASE SERVICE ACCESS AREA.