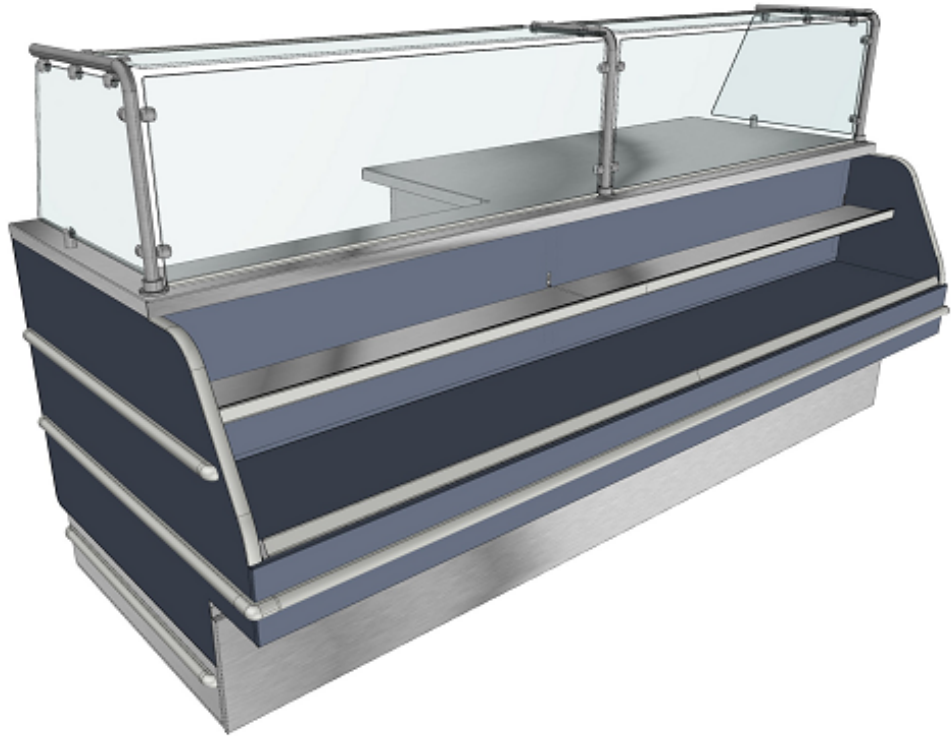


Front Facing - Dry Bakery Display - 8.5' Wide - Stainless Top - Slicer LH - Fixed Sneeze Guard

Models
CDR7073A



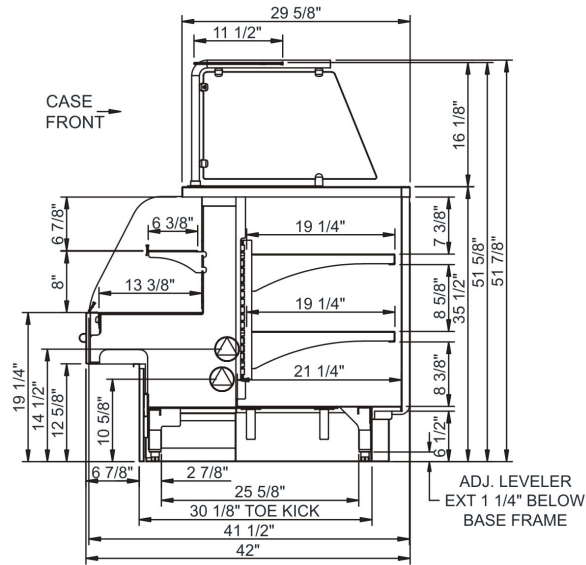
Features	Standard	Options
EXTERIOR COLOR	<input type="checkbox"/> Blue Atlantis	
LOWER FRONT PANEL COLOR	<input type="checkbox"/> Stainless steel	
BASE SUPPORT	<input type="checkbox"/> Levelers	
BUMPER	<input type="checkbox"/> 1" bumper on front (Gray)	
TOP	<input type="checkbox"/> Stainless steel	
UPPER FRONT PANEL	<input type="checkbox"/> Blue Atlantis	
SHELVING	<input type="checkbox"/> Solid shelves, non-lighted (1 level) stainless steel	
SNEEZE GUARD	<input type="checkbox"/> Clear sneeze guard glass w/ stainless steel posts	
ELECTRICAL CONNECT	<input type="checkbox"/> Empty electrical box (wiring supplied by others) (requires separate circuit)	

Applications

- Non-refrigerated end w/ shelving for Inline modules.

Front Facing Dry Bakery Display - 8.5' Wide - Stainless Top - Slicer LH - Fixed Sneeze Guard

Model	L x D x H (Lengths include end panels)
CDR7073A	100-1/8"L x 42"D x 51-7/8"H



IMPORTANT NOTES:

- Units must be shimmed during installation to ensure the unit is level and plumb.

INTENDED ENVIRONMENT

Designed to operate in ambient conditions of 75°F with 55% relative humidity.

WARMEST AVG PRODUCT TEMP

Zone	Temp (°F)
All	Ambient

INTENDED USE OF DISPLAY AREAS

Zone	Intended Use
All	Packaged / unpackaged non-refrigerated products

For more information on any of our products or services please visit us on the web at:

www.structuralconcepts.com

INFORMATION IS SUBJECT TO CHANGE WITHOUT NOTICE. Visit www.structuralconcepts.com for the most current specs.



888 E. Porter Rd. Muskegon, MI 49441

231-798-8888

Revised 6/8/2018

Front Facing - Dry Bakery Display - 8.5' Wide - Stainless Top - Slicer LH - Fixed Sneeze Guard

DIMENSIONS / SHIPPING				
Model	L"	L1"	L2"	Est Wt (lbs)
CDR7073A	N/A	100.125	0.000	N/A

ELECTRICAL															
Model	System Circuit Volts			Ph	Frq	Rated Load Amps	Min Cir Amps	Max OCP Amps	Watts	Wires	NEMA Plug	Amps Lights	Amps Fans	Amps Anti-Sweats	Amps Misc/Refrig/Heat
CDR7073A	N/A	N/A	N/A	N/A	N/A	N/A	N/A	N/A	N/A	N/A	N/A	N/A	N/A	N/A	N/A

REFRIGERATION														
Model	Zone	Section	System	Envt	REMOTE REFRIGERATION				GLYCOL / R744 REFRIGERATION					
					SST (°F)	BTUH	Defrost Interval (Hrs)	Defrost Duration (Mins)	Total GPM	Pressure Drop (psi)	Concent (%)	Liquid Temp (°F)		
CDR7073A	All	Ambient	None-N/A	Type I	N/A	N/A	N/A	N/A	N/A	N/A	N/A	N/A	N/A	N/A

INTENDED ENVIRONMENT
Type I - Designed to operate in ambient conditions of 75°F with 55% relative humidity unless noted otherwise under Envt above.

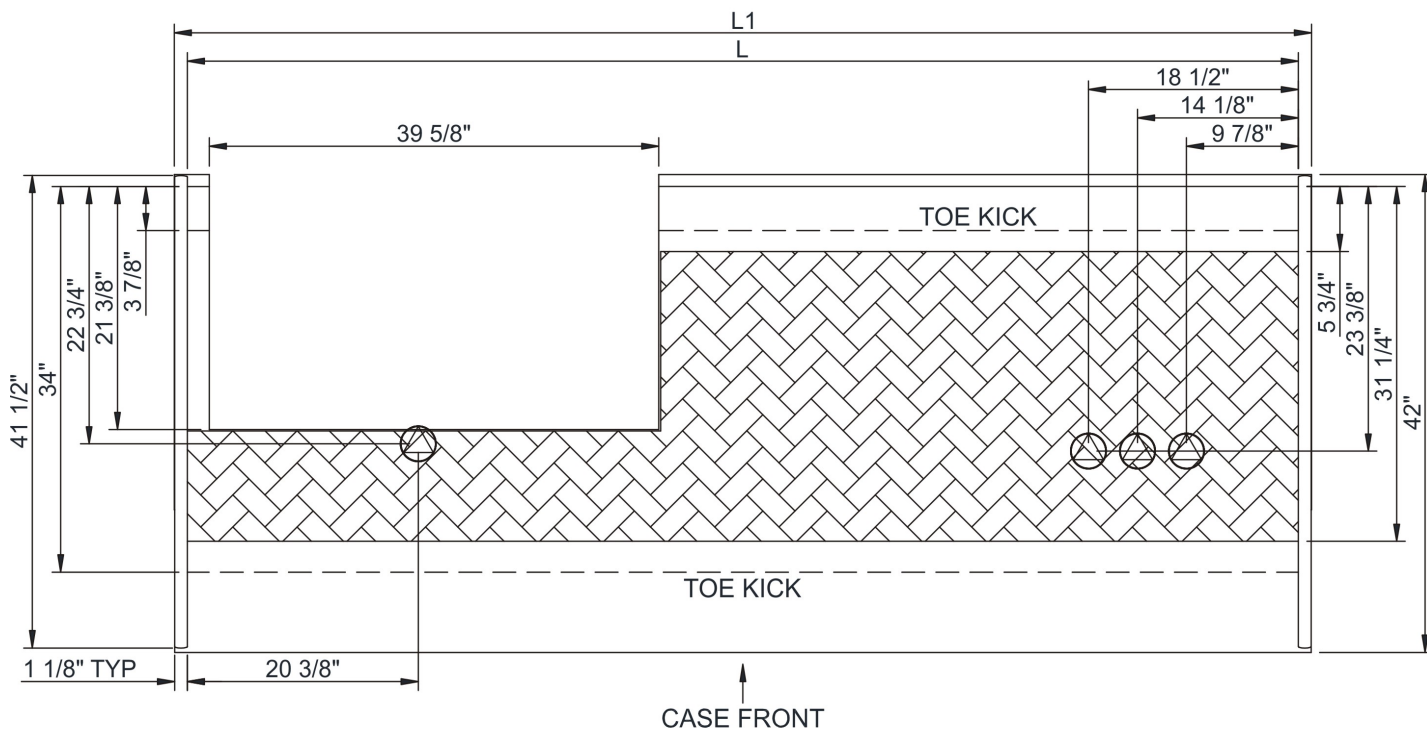
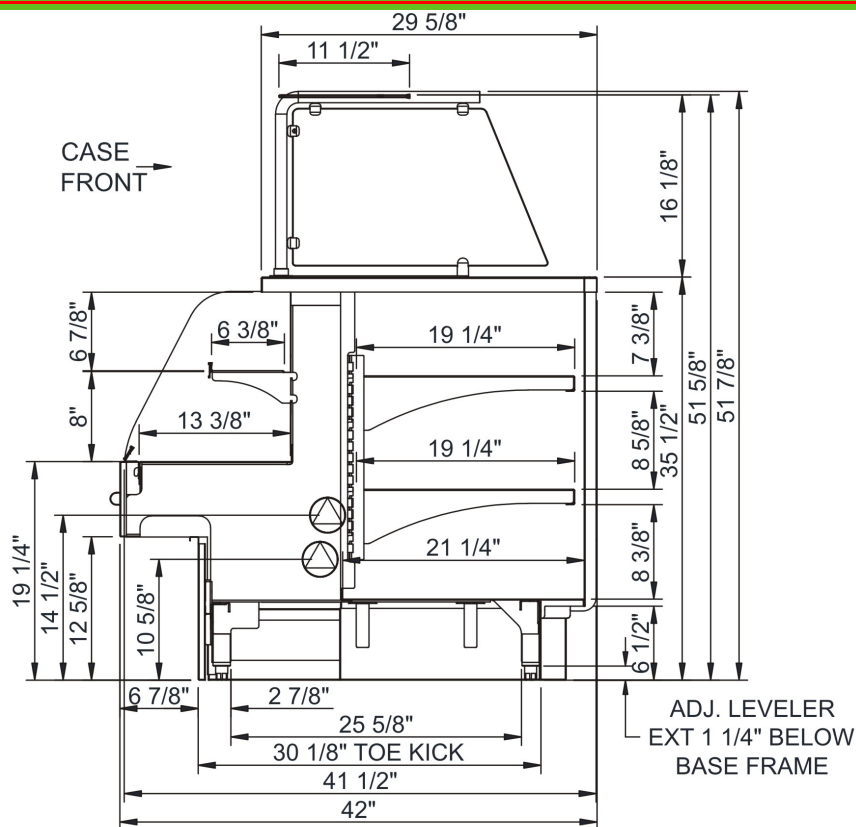
IMPORTANT NOTES
1) Units must be shimmed during installation to ensure the unit is level and plumb.

WARMEST AVERAGE PRODUCT TEMP & INTENDED USE OF ZONES		
Zone	Temp (°F)	Intended Use
All	Ambient	Packaged / unpackaged non-refrigerated products

REGULATORY
None



Front Facing - Dry Bakery Display - 8.5' Wide - Stainless Top - Slicer LH - Fixed Sneeze Guard



NOTE: ALL DIMENSIONS APPROXIMATE

- ⊗ ELECTRICAL JUNCTION BOX (SUPPLIED WITH 6" LEADS OR POWER CORD).
- ⊕ REFRIGERATION LINE CONNECTION.
- ⊙ LOCATION OF DRAIN TUBE FOR REMOTE REF. ONLY (SUPPLIED WITH 3/4" OR 1 1/2" PVC TUBE).
- ⊞ REMOTE FLOOR SINK & UTILITIES ACCESS AREA.
- ▨ SELF-CONTAINED CASE SERVICE ACCESS AREA.
- ▩ DRY CASE SERVICE ACCESS AREA.