

# Technical Information

Blend - Non-Refrigerated Self-Service End Cap

Structural Concepts®

DELIVERING FRESH. ALWAYS.™

## DIMENSIONS / SHIPPING

| Model      | L"  | L1"    | L2"   | Est Wt (lbs) |
|------------|-----|--------|-------|--------------|
| NM7255DSSV | N/A | 72.000 | 0.000 | N/A          |

## ELECTRICAL

| Model      | System Circuit Volts |            |         | Ph | Frq | Rated Load Amps | Min Cir Amps | Max OCP Amps | Watts | Wires | NEMA Plug       | Amps Lights | Amps Fans | Amps Anti-Sweats | Amps Misc/Refrig/Heat |
|------------|----------------------|------------|---------|----|-----|-----------------|--------------|--------------|-------|-------|-----------------|-------------|-----------|------------------|-----------------------|
| NM7255DSSV | Ambient/Lights (N/A) | Circuit #1 | 110-120 | 1  | 60  | 0.70            | 15           | 15           | 35    | 2+G   | 5-15P or L5-15P | 0.70        | N/A       | N/A              | N/A                   |

## REFRIGERATION

| Model      | Zone | Section | System             | Envt    | REMOTE REFRIGERATION |                 |                 |                        |                  | GLYCOL / R744 REFRIGERATION |                     |             |                  |
|------------|------|---------|--------------------|---------|----------------------|-----------------|-----------------|------------------------|------------------|-----------------------------|---------------------|-------------|------------------|
|            |      |         |                    |         | SST (°F)             | Conv. Rack BTUH | Para. Rack BTUH | Defrost Interval (Hrs) | Defrost Duration | Total GPM                   | Pressure Drop (psi) | Concent (%) | Liquid Temp (°F) |
| NM7255DSSV | All  | Ambient | Ambient/Lights-N/A | Type II | N/A                  | N/A             | N/A             | N/A                    | N/A              | N/A                         | N/A                 | N/A         | N/A              |

## INTENDED ENVIRONMENT

Type II - Designed to operate in ambient conditions of 80°F and 55% relative humidity unless noted otherwise under Envt above.

## WARMEST AVERAGE PRODUCT TEMP & INTENDED USE OF ZONES

| Zone | Temp (°F) | Intended Use                       |
|------|-----------|------------------------------------|
| 1    | Ambient   | Packaged non-refrigerated products |

## REGULATORY

|            |   |
|------------|---|
| All Models | ETL Listed to UL 65<br>ETL Sanitation to NSF/ANSI 2 |
|------------|---|

## IMPORTANT NOTES

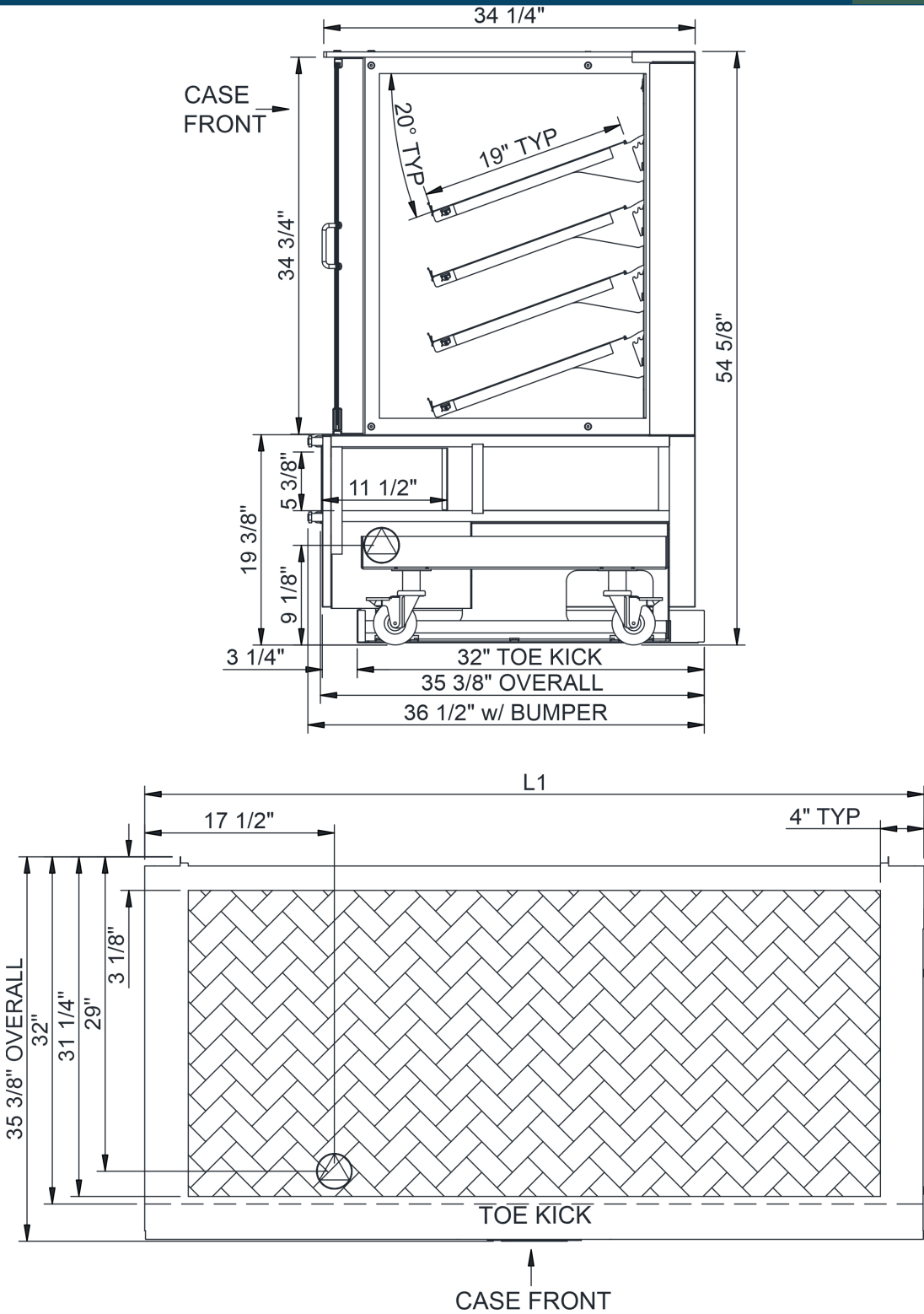
- 1) ELECTRICAL NOTE: If GFCI is required, a GFCI breaker MUST be used in lieu of a GFCI receptacle.
- 2) Remove tool free front panel to fit through 36" door.
- 3) Glass warranty only applicable to first point of delivery.





# Technical Information

Blend - Non-Refrigerated Self-Service End Cap

Structural Concepts®  
DELIVERING FRESH. ALWAYS.™



NOTE: ALL DIMENSIONS APPROXIMATE

-  ELECTRICAL JUNCTION BOX (SUPPLIED WITH 6" LEADS OR POWER CORD).
-  LOCATION OF DRAIN TUBE FOR REMOTE REF. ONLY (SUPPLIED WITH 3/4" OR 1 1/2" PVC TUBE).

-  REFRIGERATION LINE CONNECTION.
-  REMOTE FLOOR SINK & UTILITIES ACCESS AREA.

-  SELF-CONTAINED CASE SERVICE ACCESS AREA.
-  DRY CASE SERVICE ACCESS AREA.