

# Blend

Non-Refrigerated Self-Service End Cap

**Structural Concepts®**  
DELIVERING FRESH. ALWAYS.™

• **NM7255DSSV**

72"L x 35-3/8"D x 54-5/8"H

## Included

- Adjustable, locking casters
- LED top & shelf lights
- One year parts & labor warranty
- Straight base w/ box storage, tissue holder, & waste bin
- Vertical front glass



**NM7255DSSV**

Specify	Standard Features	Additional Options
<b>INTERIOR COLOR</b>	• Powder coated Silversan Black	• Stainless steel
<b>LOWER CLADDING COLOR</b>	• Powder coated Silversan Black	• Laminate (non-stock colors) • Laminate (stock colors) • Powder coated (stock/non-stock colors) • Stainless steel
<b>LOWER FRONT PANEL COLOR</b>	• Powder coated Silversan Black	• Stainless steel
<b>UPPER EXTERIOR COLOR</b>	• Powder coated Silversan Black	• Powder coated (stock/non-stock colors) • Stainless steel
<b>BUMPER</b>	• 1" Boston bumper (specify color)	• 1" Stainless steel plate rail bumper • None
<b>FRONT DOORS</b>	• Clear glass swinging doors w/o lock	
<b>PRICE TAG MOLDING</b>	• None	• 1" Price tag molding (black or silver)
<b>SHELVING</b>	• (4) Levels solid, adjustable shelving	
<b>LIGHTS</b>	• LED 3500K w/ frosted lens	• LED 4000K w/ frosted lens
<b>ELECTRICAL CONNECTION</b>	• 6' Straight blade power cord	• Electrical leads
<b>ACCESSORIES</b>		• 9" x 18" Trays

# Blend

Non-Refrigerated Self-Service End Cap

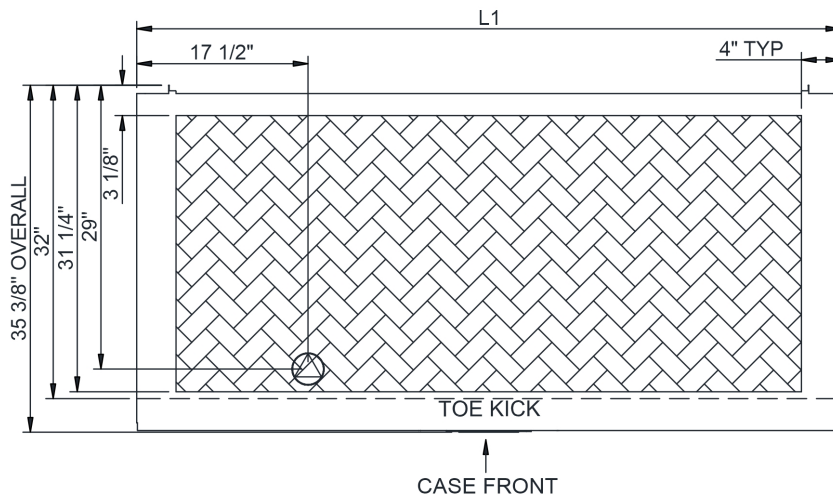
**Structural Concepts®**

DELIVERING FRESH. ALWAYS.™

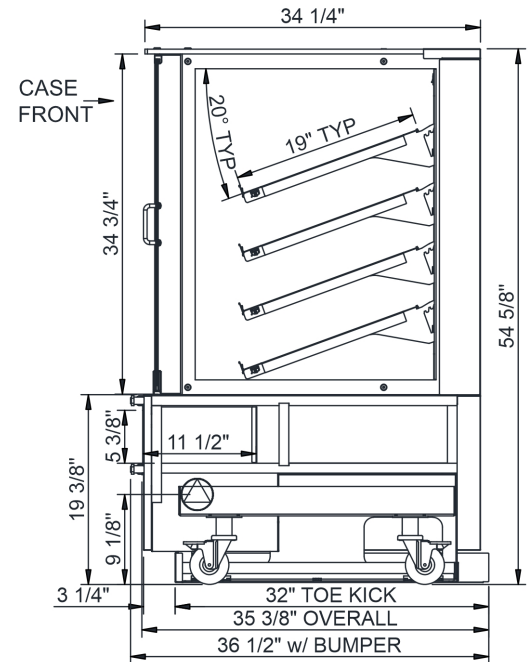
**Intended Environment:** Type II - Designed to operate in ambient conditions of 80°F and 55% relative humidity unless noted otherwise in system information below.

Zone	Intended Product To Be Displayed	Warmest Avg Prod Temp ° F
1	Packaged non-refrigerated products	Ambient



PLAN VIEW



SIDE VIEW



**NOTE: ALL DIMENSIONS APPROXIMATE**

-  **ELECTRICAL JUNCTION BOX**  
(SUPPLIED WITH 6" LEADS OR POWER CORD).
-  **LOCATION OF DRAIN TUBE FOR REMOTE REF.**  
ONLY (SUPPLIED WITH 3/4" OR 1 1/2" PVC TUBE).

-  **REFRIGERATION LINE CONNECTION.**
-  **REMOTE FLOOR SINK & UTILITIES**  
ACCESS AREA.

-  **SELF-CONTAINED CASE SERVICE ACCESS AREA.**
-  **DRY CASE SERVICE ACCESS AREA.**

Model Technical Specifications																	
Model	L"	L1"	L2"	System Circuit Volts			Phs	Freq	Amps ***	Watts	Wires	NEMA Plug	SST	Conv. Rack BTU/H	Para. Rack BTU/H	Est Wt	
NM7255DSSV	N/A	72.00	.00	Ambient/Lights (N/A)		Circuit #1	110-120	1	60	0.70	35	2+G	5-15P or L5-15P	N/A	N/A	N/A	1,100

\*\*\* Does not include electric defrost on freezer models.

**Regulatory Approvals:**

All Models	ETL Listed to UL 65 ETL Sanitation to NSF/ANSI 2
------------	---



**Important Notes:**

- 1) ELECTRICAL NOTE: If GFCI is required, a GFCI breaker MUST be used in lieu of a GFCI receptacle.
- 2) Remove tool free front panel to fit through 36" door.
- 3) Glass warranty only applicable to first point of delivery.

**⚠ WARNING:** This product can expose you to chemicals, including Urethane (Ethyl Carbamate), which are known to the State of California to cause cancer and birth defects or other reproductive harm. For more information go to [www.P65Warnings.ca.gov](http://www.P65Warnings.ca.gov).