

Encore/Oasis Series - C Multi-Temp Combination Case

Models

C3Z3667

C3Z4867

COU2757R



Features	Standard	Options
EXTERIOR COLOR	<input type="checkbox"/> Laminated (confirm pattern/grain direction)	<input type="checkbox"/> Stainless steel
INTERIOR COLOR	<input type="checkbox"/> Black	<input type="checkbox"/> Stainless steel
END PANELS	<input type="checkbox"/> Full with mirror	
UPPER REAR	<input type="checkbox"/> Clear glass rear sliding doors	<input type="checkbox"/> Rear door lock <input type="checkbox"/> Reflective glass rear sliding doors
LOWER DISPLAY	<input type="checkbox"/> Refrigerated self-service	
LOWER SHELVING	<input type="checkbox"/> Solid shelf, non-lighted (C3Z models) <input type="checkbox"/> Angled deck (COU models)	<input type="checkbox"/> Display steps (n/a w/shelf)
UPPER DISPLAY	<input type="checkbox"/> Non-refrigerated service	
UPPER SHELVING	<input type="checkbox"/> Solid shelf, lighted	<input type="checkbox"/> Clear glass shelf, lighted
LIGHTS	<input type="checkbox"/> LED top & shelf lights	
ELECTRICAL CONNECT	<input type="checkbox"/> 6' Power cord	
REFRIGERATION	<input type="checkbox"/> Breeze w/EnergyWise s/c refrigeration	
MISCELLANEOUS		<input type="checkbox"/> Night curtain, retractable, non-locking <input type="checkbox"/> Removable wire security cover, locking

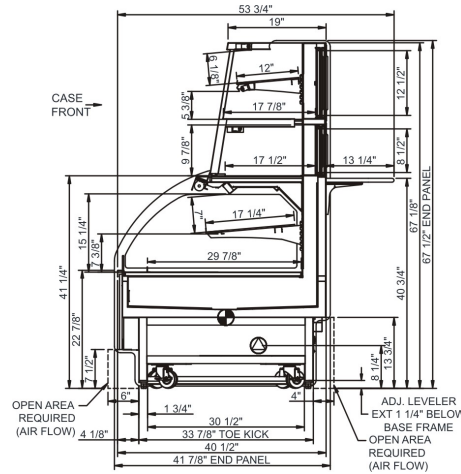
Applications

- Combination multi-temp service & self-service merchandiser for refrigerated items.

Encore/Oasis Series C Multi-Temp Combination Case

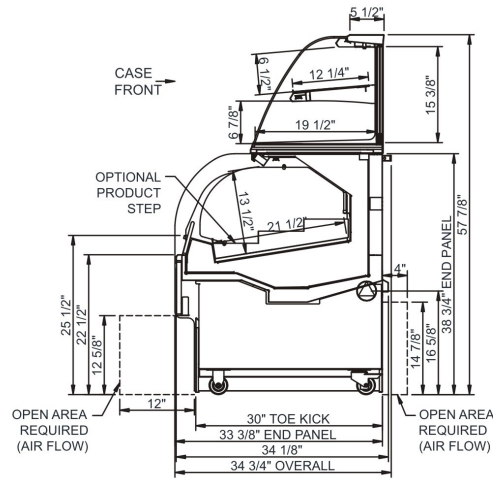
STANDARD

Model	L x D x H (Lengths include end panels)
C3Z3667	36"L x 41-7/8"D x 67-1/2"H
C3Z4867	48"L x 41-7/8"D x 67-1/2"H



COU2757R

Model	L x D x H (Lengths include end panels)
COU2757R	27-1/2"L x 34-3/4"D x 57-7/8"H



IMPORTANT NOTES:

- 1) Compressor air ventilation is out the front panel. Front panel cannot be blocked.
- 2) 43" minimum door entry clearance required (without shipping skid). (C3Z)
- 3) 35-1/2" minimum door entry clearance required (without shipping skid). (COU)
- 4) Product must be cooled before being displayed within the case. (COU)

WARNING

This product can expose you to chemicals including Urethane (Ethyl Carbamate), which are known to the State of California to cause cancer and birth defects or other reproductive harm. For more information go to www.P65Warnings.ca.gov.

INTENDED ENVIRONMENT

Designed to operate in ambient conditions of 75°F with 55% relative humidity.

WARMEST AVG PRODUCT TEMP

Zone	Temp (°F)
1	40

INTENDED USE OF DISPLAY AREAS

Zone	Intended Use
1	Packaged / unpackaged refrigerated products

For more information on any of our products or services please visit us on the web at:

www.structuralconcepts.com