

End Caps - FSE Type II Refrigerated End Cap Case - 61"H

Models

FSE45R



Conforms to NSF STD 7
TYPE II

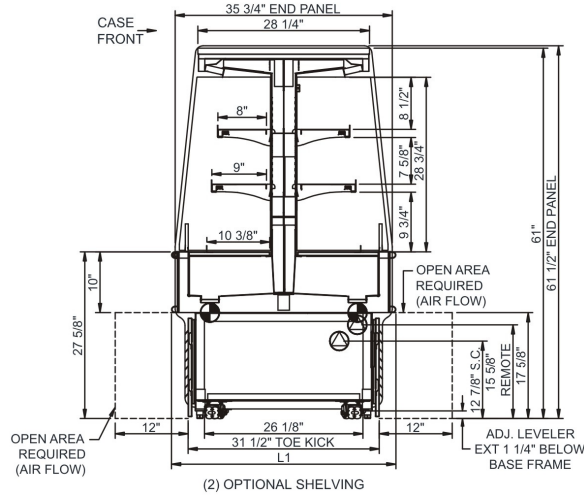
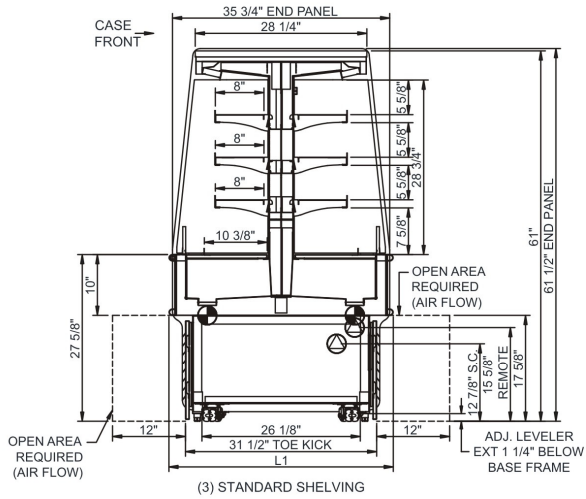
Features	Standard	Options
EXTERIOR COLOR	<input type="checkbox"/> Laminated (confirm pattern/grain direction)	<input type="checkbox"/> Painted <input type="checkbox"/> Stainless steel
INTERIOR COLOR	<input type="checkbox"/> Black	<input type="checkbox"/> Stainless steel <input type="checkbox"/> White
LOWER PANEL COLOR	<input type="checkbox"/> Black	<input type="checkbox"/> Stainless steel
TRIM COLOR	<input type="checkbox"/> Black	<input type="checkbox"/> Silver
BASE	<input type="checkbox"/> Levelers	<input type="checkbox"/> Casters
END PANEL	<input type="checkbox"/> Full with mirror	
PRICE TAG MOLDING	<input type="checkbox"/> Price tag molding	
SHELVING	<input type="checkbox"/> Metal shelves (3), non-lighted	<input type="checkbox"/> Metal shelves (2), lighted (LED) <input type="checkbox"/> Metal shelves (2), non-lighted <input type="checkbox"/> Metal shelves (3), lighted (LED)
LIGHTS	<input type="checkbox"/> LED top light	
ELECTRICAL CONNECT	<input type="checkbox"/> 6' power cord	<input type="checkbox"/> Leads
REFRIGERATION	<input type="checkbox"/> Breeze~E (Type-II) w/ EnergyWise s/c refrigeration	<input type="checkbox"/> Clean Sweep® coil cleaner (n/a w/remote) <input type="checkbox"/> Remote DX refrigeration
MISCELLANEOUS	<input type="checkbox"/> 1" bumper on front, double strip	

Applications

- Refrigerated self-service endcap for packaged products at end of counters, checkouts or grocery aisles.
- Great for convenience stores & gas stations

End Caps FSE Type II Refrigerated End Cap Case - 61"H

Model	L x D x H (Lengths include end panels)
FSE45R	37"L x 51-1/2"D x 61-1/2"H



IMPORTANT NOTES:

- Compressor air side intake and side discharge.

⚠️ WARNING:

This product can expose you to chemicals, including Urethane (Ethyl Carbamate), which are known to the state of California to cause cancer and birth defects or other reproductive harm. For more information go to www.P65Warnings.ca.gov.

INTENDED ENVIRONMENT

Designed to operate in ambient conditions of 80°F and 60% relative humidity.

WARMEST AVG PRODUCT TEMP

Zone	Temp (°F)
1	40

INTENDED USE OF DISPLAY AREAS

Zone	Intended Use
1	Packaged refrigerated products