

Islands - FSC Refrigerated Dual Sided Case

Models

FSC463R
FSC663R



NOTE: SHOWN W/ OPTIONAL
CUTAWAY END PANELS

Conforms to NSF STD 7
TYPE II

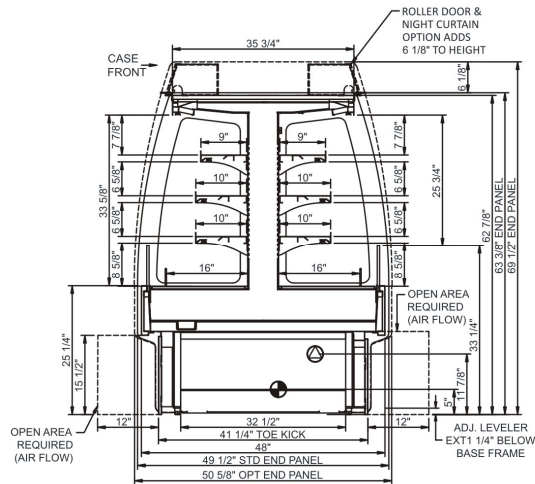
Features	Standard	Options
EXTERIOR COLOR	<input type="checkbox"/> Painted	<input type="checkbox"/> Laminated (confirm pattern/grain direction) <input type="checkbox"/> Stainless steel (includes lower front panel)
INTERIOR COLOR	<input type="checkbox"/> Black	<input type="checkbox"/> Stainless steel
LOWER FRONT PANEL COLOR	<input type="checkbox"/> Black	<input type="checkbox"/> Stainless steel (w/stainless ext. only)
BASE	<input type="checkbox"/> Casters w/ levelers	
END PANEL LEFT	<input type="checkbox"/> Full end panel w/stainless mirrored interior (vinyl edging)	<input type="checkbox"/> Cutaway end panel (vinyl edge matches interior color)
END PANEL RIGHT	<input type="checkbox"/> Full end panel w/stainless mirrored interior (vinyl edging)	<input type="checkbox"/> Cutaway end panel (vinyl edge matches interior color)
SHELVING	<input type="checkbox"/> Non-adjustable metal shelves, non-lighted	<input type="checkbox"/> Non-adjustable metal shelves, lighted (LED 3500K)
LIGHTS	<input type="checkbox"/> LED top light	
ELECTRICAL CONNECT	<input type="checkbox"/> Leads	<input type="checkbox"/> 6' Power cord
REFRIGERATION	<input type="checkbox"/> Remote DX refrigeration	<input type="checkbox"/> Breeze~E (Type-II) w/ EnergyWise s/c refrigeration
MISCELLANEOUS	<input type="checkbox"/> Price tag molding	<input type="checkbox"/> Night curtain, retractable, non-locking (inc. ht. to 69-1/2") (2) <input type="checkbox"/> Roll-down security cover, locking (inc. ht. to 69-1/2") (2)
ACCESSORIES		<input type="checkbox"/> Removable solid security cover, locking (2)

Applications

- Dual sided self-service air screen case for packaged deli items and beverages

Islands FSC Refrigerated Dual Sided Case

Model	L x D x H (Lengths include end panels)
FSC463R	47"L x 49-1/2"D x 63-3/8"H
FSC663R	75-3/8"L x 49-1/2"D x 63-3/8"H



IMPORTANT NOTES:

- 1) Electrical specs reflect highest Amp draw using lighted shelves option

WARNING

This product can expose you to chemicals including Urethane (Ethyl Carbamate), which are known to the State of California to cause cancer and birth defects or other reproductive harm. For more information go to www.P65Warnings.ca.gov.

INTENDED ENVIRONMENT

Designed to operate in ambient conditions of 80°F and 60% relative humidity.

WARMEST AVG PRODUCT TEMP

Zone	Temp (°F)
1	40

INTENDED USE OF DISPLAY AREAS

Zone	Intended Use
1	Packaged refrigerated products