

# G Series - GHSS 60"H Refrigerated High-Capacity Self-Service Case

## Models

GHSS460RLB  
 GHSS560RLB  
 GHSS660RLB  
 GHSS860RLB  
 GHSS1060RLB  
 GHSS1260RLB



## Applications

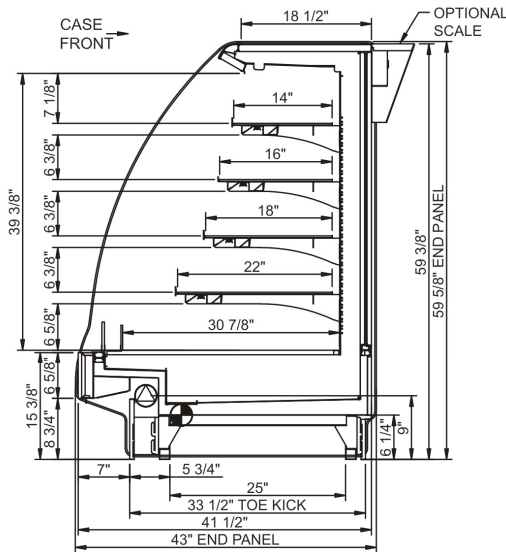
- Self-service multi-shelf merchandiser for refrigerated packaged deli, bakery or beverage items.

Features	Standard	Options
<b>EXTERIOR COLOR</b>	<input type="checkbox"/> Powder coated (specify color)	<input type="checkbox"/> Laminated (confirm pattern/grain direction) <input type="checkbox"/> Stainless steel
<b>EXTRUSION COLOR</b>	<input type="checkbox"/> Black	<input type="checkbox"/> Silver
<b>INTERIOR COLOR</b>	<input type="checkbox"/> Black	<input type="checkbox"/> Stainless steel <input type="checkbox"/> White
<b>BASE</b>	<input type="checkbox"/> Rail system for shims	<input type="checkbox"/> 6"H legs
<b>CASE PROFILE</b>	<input type="checkbox"/> Curved	<input type="checkbox"/> Flat angled
<b>END PANELS</b>	<input type="checkbox"/> None (specify per line-up)	<input type="checkbox"/> Case to case cutaway end <input type="checkbox"/> Case to case full end <input type="checkbox"/> Cutaway w/ glass <input type="checkbox"/> Full with mirror
<b>TOP BOARD</b>	<input type="checkbox"/> Powder coated (specify color)	<input type="checkbox"/> 2 cm. Quartz (specify color) <input type="checkbox"/> Laminated (confirm pattern/grain direction) <input type="checkbox"/> Solid surface (specify color) <input type="checkbox"/> Stainless steel
<b>UPPER REAR</b>	<input type="checkbox"/> Solid back panel	<input type="checkbox"/> Solid rear swinging doors
<b>SHELVING</b>	<input type="checkbox"/> (4) Lighted solid shelves	<input type="checkbox"/> (4) Lighted clear glass shelves
<b>LIGHTING UPPER</b>	<input type="checkbox"/> LED top light(s)	
<b>ELECTRICAL CONNECT</b>	<input type="checkbox"/> Leads	
<b>REFRIGERATION</b>	<input type="checkbox"/> Remote DX refrigeration	<input type="checkbox"/> E-Coated evaporator coil <input type="checkbox"/> Remote Glycol refrigeration
<b>MISCELLANEOUS</b>		<input type="checkbox"/> Bumper front/ends <input type="checkbox"/> Price tag molding <input type="checkbox"/> Top mount scale stand w/receptacle

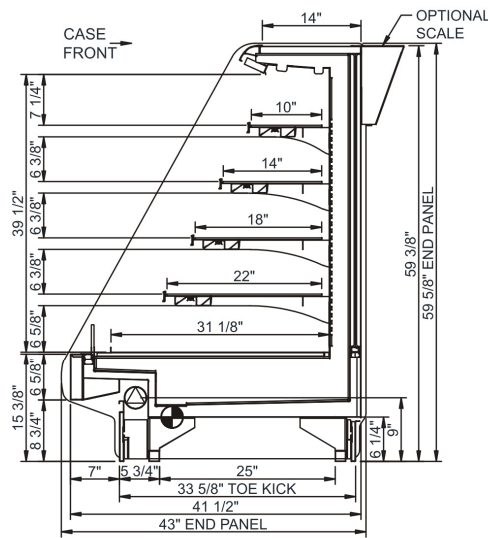
# G Series GHSS 60"H Refrigerated High-Capacity Self-Service Case

Model	L x D x H (Lengths do not include 1-1/8" end panels)
GHSS460RLB	48-3/4"L x 43"D x 59-5/8"H
GHSS560RLB	60-5/8"L x 43"D x 59-5/8"H
GHSS660RLB	73-1/8"L x 43"D x 59-5/8"H
GHSS860RLB	97-1/2"L x 43"D x 59-5/8"H
GHSS1060RLB	121-1/8"L x 43"D x 59-5/8"H
GHSS1260RLB*	146-1/4"L x 43"D x 59-5/8"H

STANDARD CURVED PROFILE



FLAT ANGLED OPTION PROFILE



## IMPORTANT NOTES:

- Units must be shimmed during installation to ensure the unit is level and plumb.

## ⚠️ WARNING

This product can expose you to chemicals including Urethane (Ethyl Carbamate), which are known to the State of California to cause cancer and birth defects or other reproductive harm. For more information go to [www.P65Warnings.ca.gov](http://www.P65Warnings.ca.gov).

## INTENDED ENVIRONMENT

Designed to operate in ambient conditions of 75°F with 55% relative humidity.

## WARMEST AVG PRODUCT TEMP

Zone	Temp (°F)
1	40

## INTENDED USE OF DISPLAY AREAS

Zone	Intended Use
1	Packaged refrigerated products

\* Additional lead-time required  
 INFORMATION IS SUBJECT TO CHANGE WITHOUT NOTICE. Visit [www.structuralconcepts.com](http://www.structuralconcepts.com) for the most current specs.

