

G Series - GHSV 52"H Refrigerated High-Capacity Service Case w/ Vertical Glass

DIMENSIONS / SHIPPING				
Model	L"	L1"	L2"	Est Wt (lbs)
GHSV452RLB	48.750	51.000	3.500	N/A
GHSV552RLB	60.625	62.875	3.500	N/A
GHSV652RLB	73.125	75.375	3.500	N/A
GHSV852RLB	97.500	99.750	3.500	N/A
GHSV1052RLB	121.125	123.375	80.625	N/A
GHSV1252RLB	146.250	148.500	101.125	N/A

ELECTRICAL															
Model	System Circuit Volts	Ph	Frq	Rated Load Amps	Min Cir Amps	Max OCP Amps	Watts	Wires	NEMA Plug	Amps Lights	Amps Fans	Amps Anti-Sweats	Amps Misc/Refrig/Heat		
GHSV452RLB	Remote(DX)	CONTACT FACTORY FOR UPDATED INFORMATION													
GHSV552RLB	Remote(DX)	Circuit #1	110-120	1	60	1.92	15	15	78	2+G	Leads Single	0.70	0.30	0.92	N/A
GHSV652RLB	Remote(N/A)	Circuit #1	110-120	1	60	2.02	15	15	190	2+G	Leads Multiple	0.70	0.62	0.70	N/A
GHSV852RLB	Remote(DX)	Circuit #1	110-120	1	60	4.10	15	15	116	2+G	Leads Single	2.10	0.60	1.40	N/A
GHSV1052RLB	Remote(DX)	Circuit #1	110-120	1	60	3.84	15	15	157	2+G	Leads Single	2.10	0.60	1.14	N/A
GHSV1252RLB	Remote(DX)	CONTACT FACTORY FOR UPDATED INFORMATION													

REFRIGERATION													
Model	Zone	Section	System	Envt	REMOTE REFRIGERATION					GLYCOL / R744 REFRIGERATION			
					SST (°F)	Conv. Rack BTUH	Para. Rack BTUH	Defrost Interval (Hrs)	Defrost Duration (Mins)	Total GPM	Pressure Drop (psi)	Concent (%)	Liquid Temp (°F)
GHSV452RLB					CONTACT FACTORY FOR UPDATED INFORMATION								
GHSV552RLB	All	Main	Remote-DX	Type I	24	2,246	2,080	4.00	30.00	N/A	N/A	N/A	N/A
GHSV652RLB	All	Main	Remote-N/A	Type I	20	2,614	2,420	4.00	30.00	N/A	N/A	N/A	N/A
GHSV852RLB	All	Main	Remote-DX	Type I	20	3,283	3,040	4.00	25.00	N/A	N/A	N/A	N/A
GHSV1052RLB	All	Main	Remote-DX	Type I	20	4,104	3,800	4.00	25.00	N/A	N/A	N/A	N/A
GHSV1252RLB					CONTACT FACTORY FOR UPDATED INFORMATION								

INTENDED ENVIRONMENT		
Type I - Designed to operate in ambient conditions of 75°F with 55% relative humidity unless noted otherwise under Envt above.		
WARMEST AVERAGE PRODUCT TEMP & INTENDED USE OF ZONES		
Zone	Temp (°F)	Intended Use
1	40	Unpackaged refrigerated products

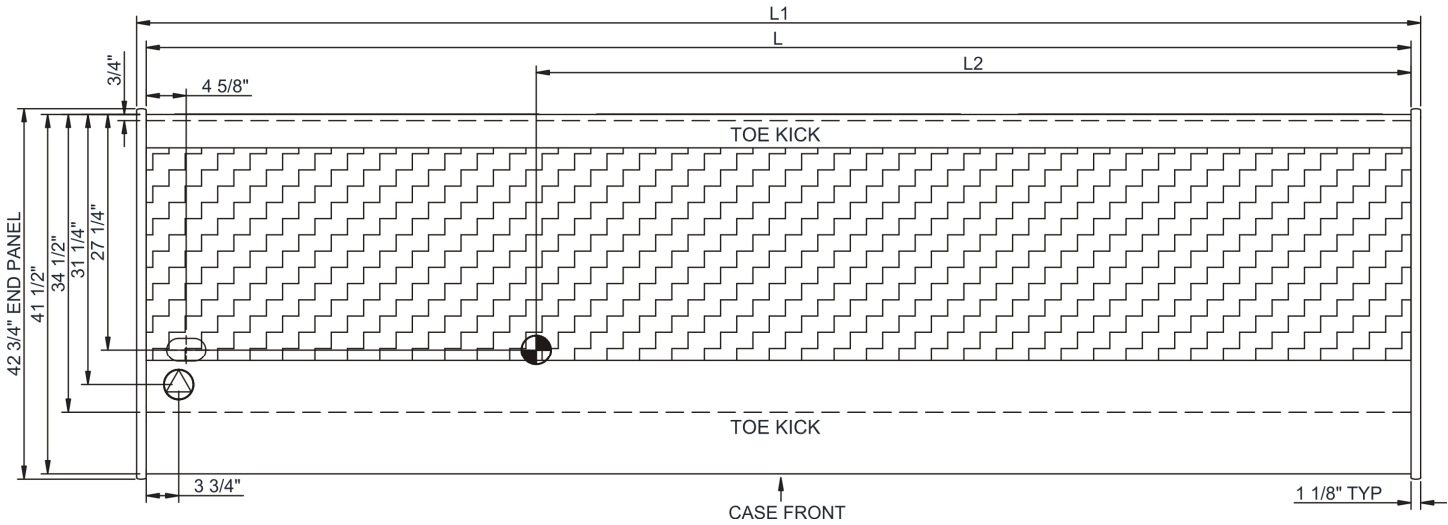
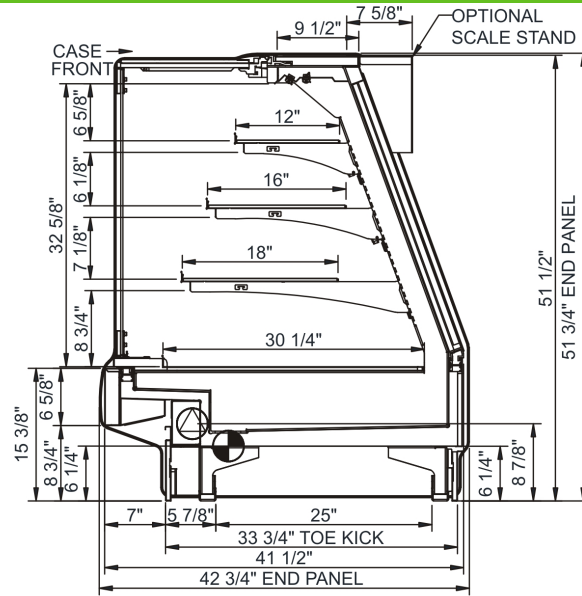
IMPORTANT NOTES
1) Units must be shimmed during installation to ensure the unit is level and plumb.

REGULATORY	
All Models	Accordance with AHRI Std 1200 ETL Listed to UL 471 ETL Listed to CAN/CSA 22.2 No. 120 UL Sanitation to NSF Std 7



In Accordance with
AHRI Std 1200

G Series - GHSV 52"H Refrigerated High-Capacity Service Case w/ Vertical Glass



NOTE: ALL DIMENSIONS APPROXIMATE

- ⊗ ELECTRICAL JUNCTION BOX (SUPPLIED WITH 6" LEADS OR POWER CORD).
- ⊙ REFRIGERATION LINE CONNECTION.
- ⊙ LOCATION OF DRAIN TUBE FOR REMOTE REF. ONLY (SUPPLIED WITH 3/4" OR 1 1/2" PVC TUBE).
- ⊙ REMOTE FLOOR SINK & UTILITIES ACCESS AREA.
- ⊙ SELF-CONTAINED CASE SERVICE ACCESS AREA.
- ⊙ DRY CASE SERVICE ACCESS AREA.